

## MLKL (Phospho Ser345) (PT0987R) PT™ Rabbit mAb

CatalogNo: YM8687 **Recombinant** 

### Key Features

#### Host Species

- Rabbit

#### Reactivity

- Human, Mouse, Rat

#### Applications

- WB, IF, ELISA

#### MW

- 54kD (Calculated)
- 54kD (Observed)

#### Isotype

- IgG, Kappa

### Recommended Dilution Ratios

**WB 1:2000-1:10000****IF 1:200-1:1000****ELISA 1:5000-1:20000**

### Storage

**Storage\*** -15°C to -25°C/1 year (Do not lower than -25°C)**Formulation** PBS, 50% glycerol, 0.05% Proclin 300, 0.05% BSA

### Basic Information

**Clonality** Monoclonal**Clone Number** PT0987R

### Immunogen Information

#### Specificity

MLKL (Phospho Ser345) Monoclonal Antibody detects endogenous levels of MLKL Phospho-ser345 at Human, Mouse, Rat. The name of modified sites may be influenced by many factors, such as species (the modified site was not originally found in human samples) and the change of protein sequence (the previous protein sequence is incomplete, and the protein sequence may be prolonged with the development of protein sequencing technology). When naming, we will use the "numbers" in historical reference to keep the sites consistent with the reports. The antibody binds to the following modification sequence (lowercase letters are modification sites): QNSIS

## Target Information

**Gene name** MLKL

**Protein Name** MLKL Phospho-ser345

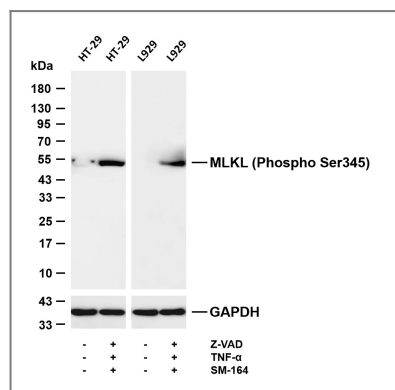
Organism	Gene ID	UniProt ID
Human	<a href="#">197259</a> ;	<a href="#">Q8NB16</a> ;
Mouse	<a href="#">74568</a> ;	<a href="#">Q9D2Y4</a> ;

**Cellular Localization** Cytoplasm . Cell membrane . Nucleus . Localizes to the cytoplasm and translocates to the plasma membrane on necroptosis induction (PubMed:24316671). Localizes to the nucleus in response to orthomyxoviruses infection (By similarity). .

**Tissue specificity** Chondrocyte,Leukocyte,Lymph node,

**Function** Domain:The protein kinase domain is predicted to be catalytically inactive.,similarity:Belongs to the protein kinase superfamily.,similarity:Contains 1 protein kinase domain.,

## Validation Data



Various whole cell lysates were separated by 4-20% SDS-PAGE, and the membrane was blotted with anti-MLKL (Phospho Ser345) (PT0987R) antibody. The HRP-conjugated Goat anti-Rabbit IgG (H + L) antibody was used to detect the antibody. Lane 1: HT-29 Lane 2: HT-29 was treated with Z-VAD(20μM) for 30 minutes before adding TNF-α(20ng/ml) and SM-164(100nM) for 7 hours. Lane 3: L929 Lane 4: L929 was treated with Z-VAD(20μM) for 30 minutes before adding TNF-α(20ng/ml) and SM-164(100nM) for 7 hours. Predicted band size: 54kDa Observed band size: 54kDa

## Contact information

Orders: [order@immunoway.com](mailto:order@immunoway.com)  
Support: [tech@immunoway.com](mailto:tech@immunoway.com)  
Telephone: 877-594-3616 (Toll Free), 408-747-0185  
Website: <http://www.immunoway.com>  
Address: 2200 Ringwood Ave San Jose, CA 95131 USA



Please scan the QR code to access additional product information:  
**MLKL (Phospho Ser345) (PT0987R) PT™ Rabbit mAb**

