

Tau (Phospho Ser396) (PT0897R) PT® Rabbit mAb

CatalogNo: YM8666 **Recombinant** 

Key Features

Host Species

- Rabbit

Reactivity

- Human, Mouse, Rat

Applications

- WB, IHC, IF, IP, ELISA

MW

- 79kD (Calculated)
- 55-130kD (Observed)

Isotype

- IgG, Kappa

Recommended Dilution Ratios

IHC 1:200-1:1000**WB 1:2000-1:10000****IF 1:200-1:1000****ELISA 1:5000-1:20000****IP 1:50-1:200**

Storage

Storage* -15°C to -25°C/1 year (Do not lower than -25°C)**Formulation** PBS, 50% glycerol, 0.05% Proclin 300, 0.05% BSA

Basic Information

Clonality Monoclonal**Clone Number** PT0897R

Immunogen Information

Specificity

Tau (Phospho Ser396) Antibody detects endogenous levels of Tau protein only when phosphorylated at S396. The name of modified sites may be influenced by many factors, such as species (the modified site was not originally found in human samples) and the change of protein sequence (the previous protein sequence is incomplete, and the protein sequence may be prolonged with the development of protein sequencing technology). When naming, we will use the "numbers" in historical reference to keep the sites consistent with the reports. The antibody binds to the following modification sequence (lowercase letters are modification sites): YKsPV

| Target Information

Gene name	MAPT		
Protein Name	Microtubule-associated protein tau (Neurofibrillary tangle protein) (Paired helical filament-tau) (PHF-tau)		
	Organism	Gene ID	UniProt ID
	Human	4137 ;	P10636 ;
	Mouse	17762 ;	P10637 ;
	Rat		P19332 ;
Cellular Localization	Cytoplasm, cytosol . Cell membrane ; Peripheral membrane protein ; Cytoplasmic side . Cytoplasm, cytoskeleton . Cell projection, axon . Cell projection, dendrite . Secreted . Mostly found in the axons of neurons, in the cytosol and in association with plasma membrane components (PubMed:10747907). Can be secreted; the secretion is dependent on protein unfolding and facilitated by the cargo receptor TMED10; it results in protein translocation from the cytoplasm into the ERGIC (endoplasmic reticulum-Golgi intermediate compartment) followed by vesicle entry and secretion (PubMed:32272059). .		
Tissue specificity	Expressed in neurons. Isoform PNS-tau is expressed in the peripheral nervous system while the others are expressed in the central nervous system.		

Function

Alternative products: Additional isoforms seem to exist. Isoforms differ from each other by the presence or absence of up to 5 of the 15 exons. One of these optional exons contains the additional tau/MAP repeat.

developmental stage: Four-repeat (type II) tau is expressed in an adult-specific manner and is not found in fetal brain, whereas three-repeat (type I) tau is found in both adult and fetal brain.

Disease: Defects in MAPT are a cause of corticobasal degeneration (CBD). It is marked by extrapyramidal signs and apraxia and can be associated with memory loss. Neuropathologic features may overlap Alzheimer disease, progressive supranuclear palsy, and Parkinson disease.

Disease: Defects in MAPT are a cause of frontotemporal dementia and parkinsonism linked to chromosome 17 (FTDP17) [MIM:600274, 172700]; also called frontotemporal dementia (FTD) or historically termed Pick complex. This form of frontotemporal dementia is characterized by presenile dementia with behavioral changes, deterioration of cognitive capacities and loss of memory. In some cases, parkinsonian symptoms are prominent. Neuropathological changes include frontotemporal atrophy often associated with atrophy of the basal ganglia, substantia nigra, amygdala. In most cases, protein tau deposits are found in glial cells and/or neurons.

Disease: Defects in MAPT are a cause of pallido-ponto-nigral degeneration (PPND) [MIM:168610]. The clinical features include ocular motility abnormalities, dystonia and urinary incontinence, besides progressive parkinsonism and dementia.

Disease: Defects in MAPT are a cause of progressive supranuclear palsy (PSP) [MIM:601104, 260540]; also known as Steele-Richardson-Olszewski syndrome. PSP is characterized by akinetic-rigid syndrome, supranuclear gaze palsy, pyramidal tract dysfunction, pseudobulbar signs and cognitive capacities deterioration. Neurofibrillary tangles and gliosis but no amyloid plaques are found in diseased brains. Most cases appear to be sporadic, with a significant association with a common haplotype including the MAPT gene and the flanking regions. Familial cases show an autosomal dominant pattern of transmission with incomplete penetrance; genetic analysis of a few cases showed the occurrence of tau mutations, including a deletion of Asn-613.

Disease: Defects in MAPT may be a cause of hereditary dysphasic disinhibition dementia (HDDD) [MIM:607485]. HDDD is a frontotemporal dementia characterized by progressive cognitive deficits with memory loss and personality changes, severe dysphasic disturbances leading to mutism, and hyperphagia.

Disease: In Alzheimer disease, the neuronal cytoskeleton in the brain is progressively disrupted and replaced by tangles of paired helical filaments (PHF) and straight filaments, mainly composed of hyperphosphorylated forms of TAU (PHF-TAU or AD P-TAU).

Domain: The tau/MAP repeat binds to tubulin. Type I isoforms contain 3 repeats while type II isoforms contain 4 repeats.

Function: Promotes microtubule assembly and stability, and might be involved in the establishment and maintenance of neuronal polarity. The C-terminus binds axonal microtubules while the N-terminus binds neural plasma membrane components, suggesting that tau functions as a linker protein between both. Axonal polarity is predetermined by tau localization (in the neuronal cell) in the domain of the cell body defined by the centrosome. The short isoforms allow plasticity of the cytoskeleton whereas the longer isoforms may preferentially play a role in its stabilization.

online information: Tau mutations, online information: Tau protein entry, online information: Vita minima - Issue 68 of March 2006, PTM: Glycation of PHF-tau, but not normal brain tau. Glycation is a non-enzymatic post-translational modification that involves a covalent linkage between a sugar and an amino group of a protein molecule forming ketoamine. Subsequent oxidation, fragmentation and/or cross-linking of ketoamine leads to the production of advanced glycation endproducts (AGES). Glycation may play a role in stabilizing PHF aggregation leading to tangle formation in AD.

PTM: Phosphorylation at serine and threonine residues in S-P or T-P motifs by proline-directed protein kinases (PDPK: CDC2, CDK5, GSK-3, MAPK) (only 2-3 sites per protein in interphase, seven-fold increase in mitosis, and in PHF-tau), and at serine residues in K-X-G-S motifs by MAP/microtubule affinity-regulating kinase (MARK) in Alzheimer diseased brains. Phosphorylation decreases with age. Phosphorylation within tau's repeat domain or in flanking regions seems to reduce tau's interaction with, respectively, microtubules or plasma membrane components. Phosphorylation on Ser-610, Ser-622, Ser-641 and Ser-673 in several isoforms during mitosis.

PTM: Polyubiquitinated. Requires functional TRAF6 and may provoke SQSTM1-dependent degradation by the proteasome (By similarity). PHF-tau can be modified by three different forms of polyubiquitination. 'Lys-48'-linked polyubiquitination is the major form, 'Lys-6'-linked and 'Lys-11'-linked polyubiquitination also occur.

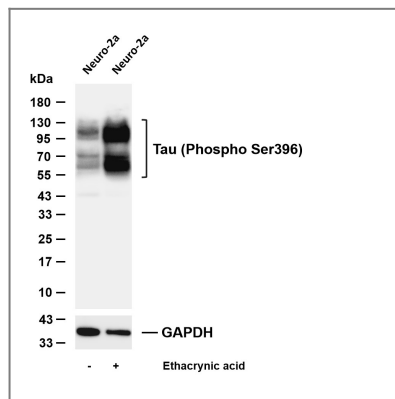
similarity: Contains 4 Tau/MAP repeats.

subcellular location: Mostly found in the axons of neurons, in the cytosol and in association with plasma membrane components.

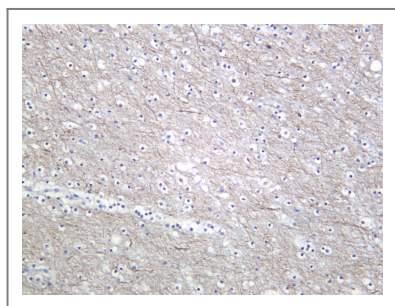
subunit: Interacts with PSMC2 through SQSTM1 (By similarity). Interacts with SQSTM1 when polyubiquitinated.

tissue specificity: Expressed in neurons. Isoform PNS-tau is expressed in the peripheral nervous system while the others are expressed in the central nervous system.

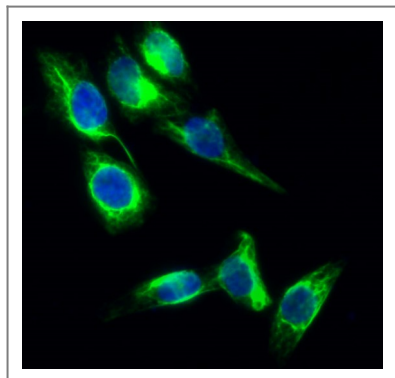
Validation Data



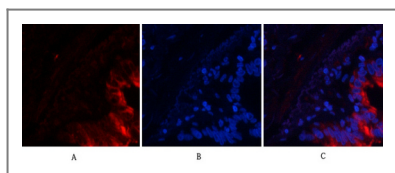
Various whole cell lysates were separated by 4-20% SDS-PAGE, and the membrane was blotted with anti-Tau (Phospho Ser396) (PT0897R) antibody. The HRP-conjugated Goat anti-Rabbit IgG (H + L) antibody was used to detect the antibody. Lane 1: Neuro-2a Lane 2: Neuro-2a was treated with Ethacrynic acid(50 μ M) for 2 hours Predicted band size: 79kDa Observed band size: 55-130kDa



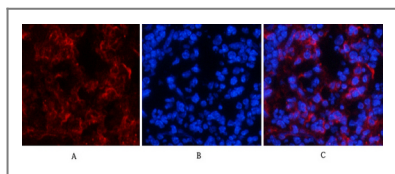
Human brain was stained with anti-Tau (Phospho Ser396) (PT0897R) Rabbit antibody



Immunofluorescence analysis of HeLa cell. 1, Tau (phospho Ser396) Antibody(green) was diluted at 1:200(4 $^{\circ}$ overnight). 2, Goat Anti Rabbit Alexa Fluor 488 Catalog:RS3211 was diluted at 1:1000(room temperature, 50min). 3 DAPI(blue) 10min.



Immunofluorescence analysis of human-lung tissue. 1, Tau (phospho Ser396) primary Antibody(red) was diluted at 1:200(4 $^{\circ}$ C, overnight). 2, Cy3 labeled Secondary antibody was diluted at 1:300(room temperature, 50min). 3, Picture B: DAPI(blue) 10min. Picture A: Target. Picture B: DAPI. Picture C: merge of A+B



Immunofluorescence analysis of mouse-spleen tissue. 1, Tau (phospho Ser396) primary Antibody(red) was diluted at 1:200(4 $^{\circ}$ C, overnight). 2, Cy3 labeled Secondary antibody was diluted at 1:300(room temperature, 50min). 3, Picture B: DAPI(blue) 10min. Picture A: Target. Picture B: DAPI. Picture C: merge of A+B

| Contact information

Orders: order@immunoway.com
Support: tech@immunoway.com
Telephone: 877-594-3616 (Toll Free), 408-747-0185
Website: <http://www.immunoway.com>
Address: 2200 Ringwood Ave San Jose, CA 95131 USA



Please scan the QR code to access additional product information:

Tau (Phospho Ser396) (PT0897R) PT® Rabbit mAb

For Research Use Only. Not for Use in Diagnostic Procedures.

[Antibody](#) | [ELISA Kits](#) | [Protein](#) | [Reagents](#)