

CPT1A (PT0640R) PT® Rabbit mAb

CatalogNo: YM8449 **Recombinant** 

Key Features

Host Species

- Rabbit

Reactivity

- Human, Mouse, Rat

Applications

- WB, IHC, IF, IP, ELISA

MW

- 88kD (Calculated)
- 88kD (Observed)

Isotype

- IgG, Kappa

Recommended Dilution Ratios

IHC 1:200-1:1000

WB 1:2000-1:10000

IF 1:200-1:1000

ELISA 1:5000-1:20000

IP 1:50-1:200

Storage

Storage* -15°C to -25°C/1 year (Do not lower than -25°C)

Formulation PBS, 50% glycerol, 0.05% Proclin 300, 0.05% BSA

Basic Information

Clonality Monoclonal

Clone Number PT0640R

Immunogen Information

Specificity Endogenous

| Target Information

Gene name CPT1A CPT1

Protein Name CPT1A

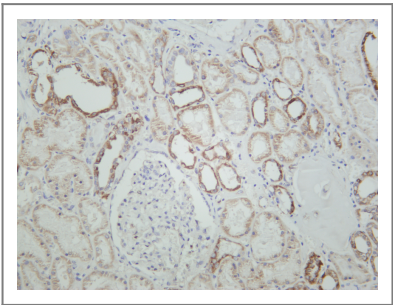
Organism	Gene ID	UniProt ID
Human	1374 ;	P50416 ;
Mouse	12894 ;	P97742 ;
Rat	25757 ;	P32198 ;

Cellular Localization Mitochondrion outer membrane

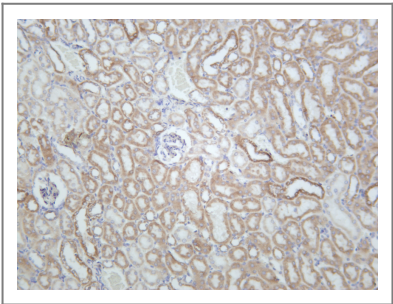
Tissue specificity Strong expression in kidney and heart, and lower in liver and skeletal muscle.

Function Catalytic activity:Palmitoyl-CoA + L-carnitine = CoA + L-palmitoylcarnitine.,Disease:Defects in CPT1A are the cause of carnitine palmitoyltransferase I deficiency (CPT-I deficiency) [MIM:255120]; also known as CPT1A deficiency. CPT I deficiency is a rare autosomal recessive metabolic disorder of long-chain fatty acid oxidation characterized by severe episodes of hypoketotic hypoglycemia usually occurring after fasting or illness. Onset is in infancy or early childhood.,enzyme regulation:Inhibitors such as malonyl-CoA interact with its catalytic domain and not with an associated regulatory component.,pathway:Lipid metabolism; fatty acid beta-oxidation.,similarity:Belongs to the carnitine/choline acetyltransferase family.,tissue specificity:Strong expression in kidney and heart, and lower in liver and skeletal muscle.,

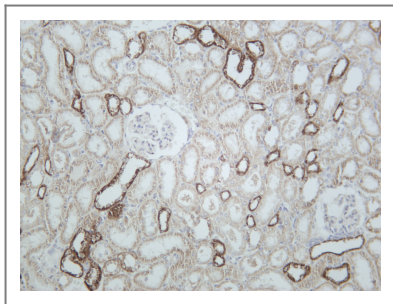
| Validation Data



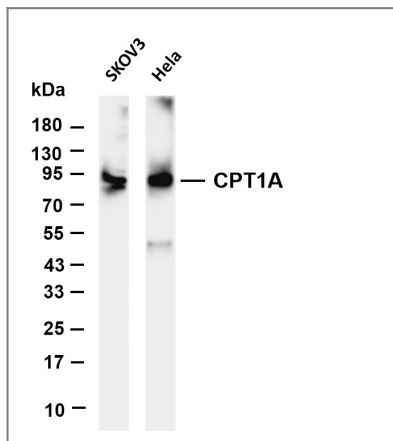
Human kidney was stained with anti-CPT1A rabbit antibody



Mouse kidney was stained with anti-CPT1A rabbit antibody



Rat kidney was stained with anti-CPT1A rabbit antibody



Various whole cell lysates were separated by 4-20% SDS-PAGE, and the membrane was blotted with anti-CPT1A antibody. The HRP-conjugated Goat anti-Rabbit IgG(H + L) antibody was used to detect the antibody. Lane 1: SKOV3 Lane 2: HeLa Predicted band size: 88kDa Observed band size: 88kDa

Contact information

Orders: order@immunoway.com
 Support: tech@immunoway.com
 Telephone: 877-594-3616 (Toll Free), 408-747-0185
 Website: <http://www.immunoway.com>
 Address: 2200 Ringwood Ave San Jose, CA 95131 USA



Please scan the QR code to access additional product information:
CPT1A (PT0640R)
PT® Rabbit mAb

For Research Use Only. Not for Use in Diagnostic Procedures.

[Antibody](#) | [ELISA Kits](#) | [Protein](#) | [Reagents](#)