

## PI3-Kinase p110 $\beta$ (PT0533R) PT™ Rabbit mAb

CatalogNo: YM8354 **Recombinant** 

### Key Features

**Host Species**

- Rabbit

**Reactivity**

- Human, Mouse, Rat

**Applications**

- WB, IHC, IF, ELISA

**MW**

- 123kD (Calculated)
- 110kD (Observed)

**Isotype**

- IgG, Kappa

### Recommended Dilution Ratios

**IHC 1:200-1:1000****WB 1:2000-1:10000****IF 1:200-1:1000****ELISA 1:5000-1:20000**

### Storage

**Storage\*** -15°C to -25°C/1 year (Do not lower than -25°C)**Formulation** PBS, 50% glycerol, 0.05% Proclin 300, 0.05% BSA

### Basic Information

**Clonality** Monoclonal**Clone Number** PT0533R

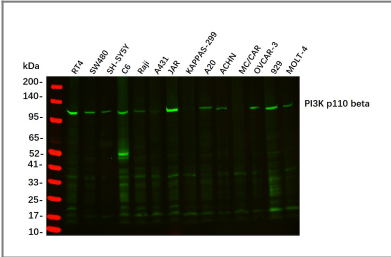
### Immunogen Information

**Specificity** Endogenous

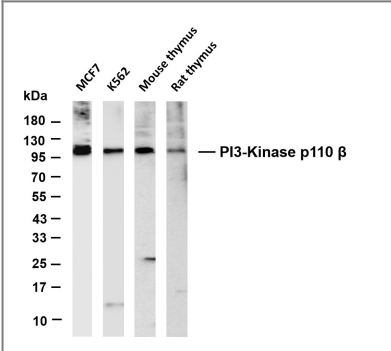
### Target Information

Gene name	PIK3CB PIK3C1		
Protein Name	Phosphatidylinositol 4,5-bisphosphate 3-kinase catalytic subunit beta isoform (PI3-kinase subunit beta) (PI3K-beta) (PI3Kbeta) (PtdIns-3-kinase subunit beta) (Phosphatidylinositol 4,5-bisphosphate 3-kinase 110 kDa catalytic subunit beta) (PtdIns-3-kinase subunit p110-beta) (p110beta)		
	Organism	Gene ID	UniProt ID
	Human	<a href="#">5291</a> ;	<a href="#">P42338</a> ;
	Mouse		<a href="#">Q8BTI9</a> ;
	Rat		<a href="#">Q9Z1L0</a> ;
Cellular Localization	Cytoplasm . Nucleus . Interaction with PIK3R2 is required for nuclear localization and export.		
Tissue specificity	Expressed ubiquitously.		
Function	Catalytic activity:ATP + 1-phosphatidyl-1D-myo-inositol 4,5-bisphosphate = ADP + 1-phosphatidyl-1D-myo-inositol 3,4,5-trisphosphate.,Function:Phosphorylates PtdIns, PtdIns4P and PtdIns(4,5)P2 with a preference for PtdIns(4,5)P2.,pathway:Phospholipid metabolism; phosphatidylinositol phosphate biosynthesis.,similarity:Belongs to the PI3/PI4-kinase family.,similarity:Contains 1 PI3K/PI4K domain.,subunit:Heterodimer of a p110 (catalytic) and a p85 (regulatory) subunit.,tissue specificity:Expressed ubiquitously.,		

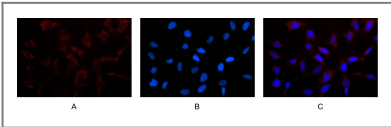
Validation Data



Western Blot analysis using various cell lysate, Proteins were separated by 4-20% SDS-PAGE, and the membrane was blotted with PI3-Kinase p110 beta Rabbit mAb diluted at 1:2000. Secondary :Dylight 800, Goat Anti Rabbit IgG(RS23920 1:10000)



Various whole cell lysates were separated by 4-20% SDS-PAGE, and the membrane was blotted with anti-PI3-Kinase p110 β antibody. The HRP-conjugated Goat anti-Rabbit IgG(H + L) antibody was used to detect the antibody. Lane 1: MCF7 Lane 2: K562 Lane 3: Mouse thymus Lane 4: Rat thymus Predicted band size: 123kDa Observed band size: 110kDa



Immunofluorescence analysis of HEK293. Picture A: PI3-Kinase p110 β antibody (red). Picture B: DAPI (blue). Picture C: Merge of A+B

## | Contact information

Orders: order@immunoway.com  
Support: tech@immunoway.com  
Telephone: 877-594-3616 (Toll Free), 408-747-0185  
Website: <http://www.immunoway.com>  
Address: 2200 Ringwood Ave San Jose, CA 95131 USA



Please scan the QR code  
to access additional  
product information:

**PI3-Kinase p110  $\beta$**   
**(PT0533R) PT™**  
**Rabbit mAb**

---

For Research Use Only. Not for Use in Diagnostic Procedures.

[Antibody](#) | [ELISA Kits](#) | [Protein](#) | [Reagents](#)