

β Actin (PT0519R) PT™ Rabbit mAb

CatalogNo: YM8343 **Recombinant** 

Key Features

Host Species

- Rabbit

Reactivity

- Human, Mouse, Rat

Applications

- WB, IHC, IF, ELISA

MW

- 42kD (Calculated)
- 42kD (Observed)

Isotype

- IgG, Kappa

Recommended Dilution Ratios

IHC 1:2000-1:20000**WB 1:2000-1:10000****IF 1:200-1:1000****ELISA 1:5000-1:20000**

Storage

Storage* -15°C to -25°C/1 year (Do not lower than -25°C)**Formulation** PBS, 50% glycerol, 0.05% Proclin 300, 0.05% BSA

Basic Information

Clonality Monoclonal**Clone Number** PT0519R

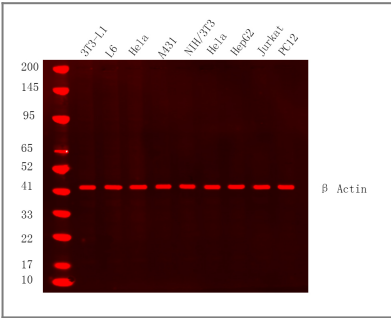
Immunogen Information

Specificity Endogenous

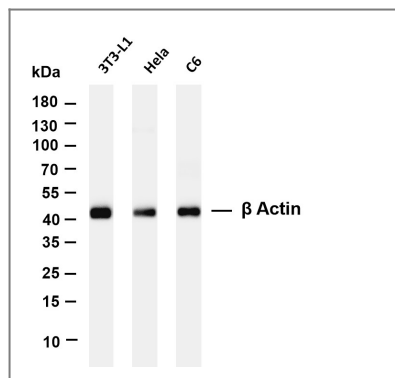
Target Information

Gene name	ACTB		
Protein Name	Actin cytoplasmic 1		
	Organism	Gene ID	UniProt ID
	Human	60;	P60709;
	Mouse	11461;	P60710;
	Rat	81822;	P60711;
Cellular Localization	Cytoplasm		
Tissue specificity	B-cell lymphoma,Brain,Cajal-Retzius cell,Eye,Fetal brain cortex,Foreskin,Hepatocellular car		
Function	<p>Disease:Defects in ACTB are a cause of dystonia juvenile-onset (DYTJ) [MIM:607371]. DYTJ is a form of dystonia with juvenile onset. Dystonia is defined by the presence of sustained involuntary muscle contraction, often leading to abnormal postures. DYTJ patients manifest progressive, generalized, dopa-unresponsive dystonia, developmental malformations and sensory hearing loss.,Function:Actins are highly conserved proteins that are involved in various types of cell motility and are ubiquitously expressed in all eukaryotic cells.,miscellaneous:In vertebrates 3 main groups of actin isoforms, alpha, beta and gamma have been identified. The alpha actins are found in muscle tissues and are a major constituent of the contractile apparatus. The beta and gamma actins coexist in most cell types as components of the cytoskeleton and as mediators of internal cell motility.,similarity:Belongs to the actin family.,subunit:Polymerization of globular actin (G-actin) leads to a structural filament (F-actin) in the form of a two-stranded helix. Each actin can bind to 4 others. Component of the BAF complex, which includes at least actin (ACTB), ARID1A, ARID1B/BAF250, SMARCA2, SMARCA4/BRG1, ACTL6A/BAF53, ACTL6B/BAF53B, SMARCE1/BAF57 SMARCC1/BAF155, SMARCC2/BAF170, SMARCB1/SNF5/INI1, and one or more of SMARCD1/BAF60A, SMARCD2/BAF60B, or SMARCD3/BAF60C. In muscle cells, the BAF complex also contains DPF3. Found in a complex with XPO6, Ran, ACTB and PFN1. Interacts with XPO6.,</p>		

Validation Data



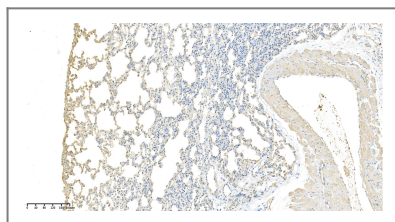
Western Blot analysis using Various whole cell lysates were separated by 4-20% SDS-PAGE, and the membrane was blotted with antiβ Actin PT® Rabbit mAb-YM8343 diluted at 1:20000. Secondary : Dylight 800, Goat Anti Rabbit IgG(RS23920 1:10000)



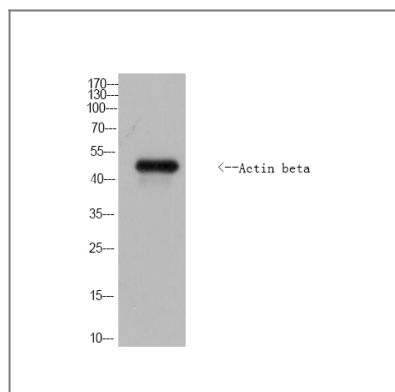
Various whole cell lysates were separated by 4-20% SDS-PAGE, and the membrane was blotted with anti-β Actin antibody. The HRP-conjugated Goat anti-Rabbit IgG(H + L) antibody was used to detect the antibody. Lane 1: 3T3-L1 Lane 2: HeLa Lane 3: C6 Predicted band size: 42kDa Observed band size: 42kDa



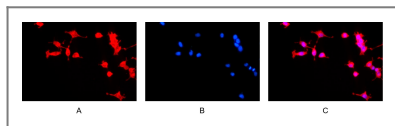
Human colon was stained with anti-β Actin rabbit antibody



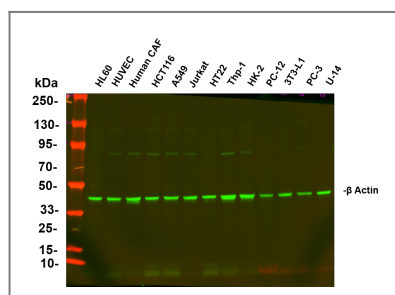
Rat lungs was stained with anti-β Actin Rabbit antibody



Western Blot analysis of Drosophilidae cells using Actin beta rabbit pAb(Drosophilidae). Secondary antibody(catalog#:RS0002) was diluted at 1:20000



Immunofluorescence analysis of HEK293. Picture A: β Actin antibody (red). Picture B: DAPI (blue). Picture C: Merge of A+B



Various whole cell lysates were separated by 4-20% SDS-PAGE, and the primary antibody was used at 4°C, over night with a 1:5000 dilution . The Dylight 800-conjugated Goat anti-Rabbit antibody(Cat:RS23920) was used to detect the antibody. Lane1: HL60 - Human promyelocytic leukemia cell Lane2: HUVEC - Human umbilical vein endothelial cell Lane3: Human CAF - Human cancer-associated fibroblast Lane4: HCT116 - Human colorectal carcinoma Lane5: A549 - Human lung carcinoma Lane6: Jurkat - Human T lymphocyte leukemia Lane7: HT22 - Mouse hippocampal neuronal Lane8: Thp-1 - Human monocytic leukemia Lane9: HK-2 - Human proximal tubular epithelial Lane10: PC-12 - Rat adrenal pheochromocytoma Lane11: 3T3-L1 - Mouse embryonic fibroblast Lane12: PC-3 - Human prostate adenocarcinoma Lane13: U-14 - Mouse cervical carcinoma Predicted band size: 42kDa Observed band size: 42kDa

Orders: order@immunoway.com
Support: tech@immunoway.com
Telephone: 877-594-3616 (Toll Free), 408-747-0185
Website: <http://www.immunoway.com>
Address: 2200 Ringwood Ave San Jose, CA 95131 USA



Please scan the QR code
to access additional
product information:
β Actin (PT0519R)
PT™ Rabbit mAb

For Research Use Only. Not for Use in Diagnostic Procedures.

[Antibody](#) | [ELISA Kits](#) | [Protein](#) | [Reagents](#)