

TBK1 (PT0490R) PT® Rabbit mAb

CatalogNo: YM8322 **Recombinant** 

Key Features

Host Species

- Rabbit

Reactivity

- Human, Mouse, Rat,

Applications

- WB, IHC, IF, IP, ELISA

MW

- 84kD (Calculated)
- 84kD (Observed)

Isotype

- IgG, Kappa

Recommended Dilution Ratios

IHC 1:200-1:1000

WB 1:2000-1:10000

IF 1:200-1:1000

ELISA 1:5000-1:20000

IP 1:50-1:200

Storage

Storage* -15°C to -25°C/1 year (Do not lower than -25°C)

Formulation PBS, 50% glycerol, 0.05% Proclin 300, 0.05% BSA

Basic Information

Clonality Monoclonal

Clone Number PT0490R

Immunogen Information

Specificity Endogenous

Target Information

Gene name TBK1

Protein Name Serine/threonine-protein kinase TBK1

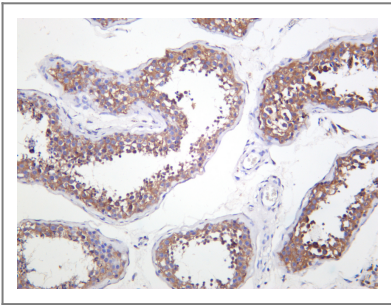
Organism	Gene ID	UniProt ID
Human	29110 ;	Q9UHD2 ;
Mouse	56480 ;	Q9WUN2 ;

Cellular Localization Cytoplasm

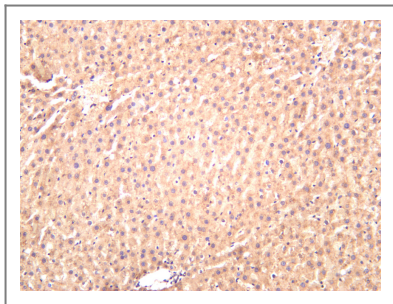
Tissue specificity Ubiquitous with higher expression in testis. Expressed in the ganglion cells, nerve fiber layer and microvasculature of the retina.

Function Catalytic activity:ATP + a protein = ADP + a phosphoprotein.,Function:Serine/threonine protein involved in the signaling cascade converging to the activation of the transcription factor NF-kappa-B. May function as an IKK kinase, playing an essential role in the transcription of a subset of TNF-alpha-induced genes. Also mediates production of RANTES/CCL5 and interferon-beta/IFNB1. Has a pivotal role in the innate immune response. Phosphorylates Borna disease virus (BDV) P protein. Phosphorylates and activates IRF3 and IRF7 and allows their nuclear localization. This leads to production of alpha/beta interferons and the development of a cellular antiviral state. It also seems to be a central factor in the induction of the antiviral interferon response. Inhibition of its interaction with IRF3, due to HCV NS3 binding or BDV P protein seems to be one mechanism of inhibition of the innate immune responses of hepatitis C virus (HCV) infection or Borna disease virus infection respectively.,similarity:Belongs to the protein kinase superfamily. Ser/Thr protein kinase family. I-kappa-B kinase subfamily.,similarity:Contains 1 protein kinase domain.,subunit:Interacts with TIRAP, TANK and TRAF2. Part of a ternary complex consisting of TANK, TRAF2 and TBK1. Interacts with AZI2. Interacts with SIKE. Interacts with TICAM1/TRIF, IRF3 and DDX58/RIG-I, interactions are disrupted by the interaction between TBK1 and SIKE. Interacts with HCV NS3, a hepatitis C virus protein and with BDV P protein, a Borna disease virus protein.,tissue specificity:Ubiquitous with higher expression in testis.,

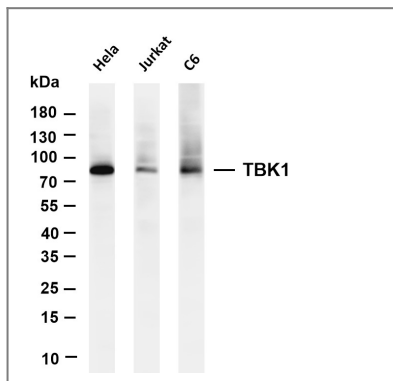
Validation Data



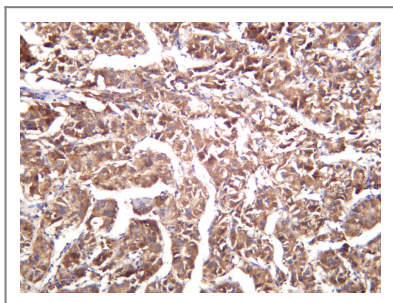
Human testis was stained with anti-TBK1 rabbit antibody



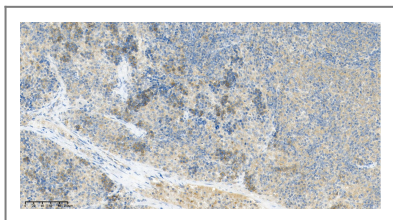
Rat liver was stained with anti-TBK1 rabbit antibody



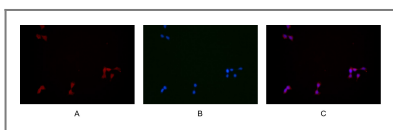
Various whole cell lysates were separated by 4-20% SDS-PAGE, and the membrane was blotted with anti-TBK1 antibody. The HRP-conjugated Goat anti-Rabbit IgG(H + L) antibody was used to detect the antibody. Lane 1: HeLa Lane 2: Jurkat Lane 3: C6 Predicted band size: 84kDa Observed band size: 84kDa



Human hepatocellular carcinoma was stained with anti-TBK1 rabbit antibody



Rat spleen was stained with anti-TBK1 Rabbit antibody



Immunofluorescence analysis of HEK293. Picture A: TBK1 antibody (red). Picture B: DAPI (blue). Picture C: Merge of A+B

Contact information

Orders: order@immunoway.com
 Support: tech@immunoway.com
 Telephone: 877-594-3616 (Toll Free), 408-747-0185
 Website: <http://www.immunoway.com>
 Address: 2200 Ringwood Ave San Jose, CA 95131 USA



Please scan the QR code to access additional product information:
TBK1 (PT0490R)
PT® Rabbit mAb

