

MKK3 (PT0556R) PT™ Rabbit mAb

CatalogNo: YM8286 **Recombinant** 

Key Features

Host Species

- Rabbit

Reactivity

- Human, Mouse, Rat

Applications

- WB, IHC, IF, IP, ELISA

MW

- 39kD (Calculated)
- 39kD (Observed)

Isotype

- IgG, Kappa

Storage

Storage* -15°C to -25°C/1 year (Do not lower than -25°C)**Formulation** PBS, 50% glycerol, 0.05% Proclin 300, 0.05% BSA

Recommended Dilution Ratios

WB 1:2000-1:10000**IF 1:200-1:1000****ELISA 1:5000-1:20000****IP 1:50-1:200**

Basic Information

Clonality Monoclonal**Clone Number** PT0556R

Immunogen Information

Specificity Endogenous

Target Information

Gene name MAP2K3

Protein Name Dual specificity mitogen-activated protein kinase kinase 3

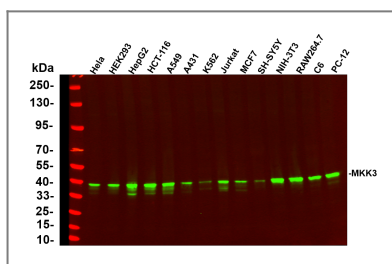
Organism	Gene ID	UniProt ID
Human	84335 ;	P46734 ;
Mouse	26397 ;	O09110 ;

Cellular Localization Cytoplasm, Nucleus

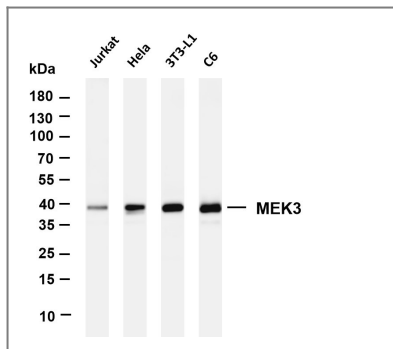
Tissue specificity Widely expressed with highest levels of expression in liver and heart. Expressed at higher levels in cancer cell lines (e.g. A-549 and HeLa) than in normal cell lines (e.g. HEK293).

Function Catalytic activity:ATP + a protein = ADP + a phosphoprotein.,disease:Defects in MAP2K3 may be involved in colon cancer.,enzyme regulation:Activated by dual phosphorylation on Ser-218 and Thr-222.,Function:Dual specificity kinase. Is activated by cytokines and environmental stress in vivo. Catalyzes the concomitant phosphorylation of a threonine and a tyrosine residue in the MAP kinase p38.,PTM:Autophosphorylated.,PTM:Phosphorylation on Ser-218 and Thr-222 by MAP kinase kinase kinases regulates positively the kinase activity.,PTM:Yersinia yopJ may acetylate Ser/Thr residues, preventing phosphorylation and activation, thus blocking the MAPK signaling pathway.,similarity:Belongs to the protein kinase superfamily.,similarity:Belongs to the protein kinase superfamily. STE Ser/Thr protein kinase family. MAP kinase kinase subfamily.,similarity:Contains 1 protein kinase domain.,subunit:Binds to DYRK1B/MIRK and increases its kinase activity. Part of a complex with MAP3K3, RAC1 and CCM2. Interacts with Yersinia yopJ.,tissue specificity:Abundant expression is seen in the skeletal muscle. It is also widely expressed in other tissues.,

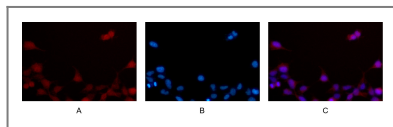
Validation Data



Various whole cell lysates were separated by 4-20% SDS-PAGE, and the primary antibody was used at 4°C, over night with a 1:5000 dilution . The Dylight 800-conjugated Goat anti-Rabbit antibody(Cat:RS23920) was used to detect the antibody. Lane1: HeLa - Human cervical cancer Lane2: HEK293 - Human normal embryonic kidney Lane3: HepG2 - Human hepatocellular carcinoma Lane4: HCT-116 - Human colon cancer Lane5: A549 - Human lung adenocarcinoma Lane6: A431 - Human skin squamous cell carcinoma Lane7: K562 - Human chronic myeloid leukemia Lane8: Jurkat - Human acute T cell leukemia cells Lane9: MCF7 - Human breast cancer Lane10: SH-SY5Y - Human neuroblastoma cells Lane11: NIH-3T3 - NIH mouse fibroblasts Lane12: RAW264.7 - Mouse mononuclear macrophage leukemia cells Lane13: C6 - Rat glioma cells Lane14: PC-12 - Pheochromocytoma in rats Predicted band size: 39kDa Observed band size: 39kDa



Various whole cell lysates were separated by 4-20% SDS-PAGE, and the membrane was blotted with anti-MEK3 antibody. The HRP-conjugated Goat anti-Rabbit IgG(H + L) antibody was used to detect the antibody. Lane 1: Jurkat Lane 2: HeLa Lane 3: 3T3-L1 Lane 4: C6 Predicted band size: 39kDa Observed band size: 39kDa



Immunofluorescence analysis of HEK293. Picture A: MEK3 antibody (red). Picture B: DAPI (blue). Picture C: Merge of A+B

Contact information

Orders: order@immunoway.com
 Support: tech@immunoway.com
 Telephone: 877-594-3616 (Toll Free), 408-747-0185
 Website: <http://www.immunoway.com>
 Address: 2200 Ringwood Ave San Jose, CA 95131 USA



Please scan the QR code to access additional product information:
MKK3 (PT0556R)
PT™ Rabbit mAb

For Research Use Only. Not for Use in Diagnostic Procedures.

[Antibody](#) | [ELISA Kits](#) | [Protein](#) | [Reagents](#)