

Oct-4 (PT0430R) PT™ Rabbit mAb

CatalogNo: YM8272 **Recombinant** 

Key Features

Host Species

- Rabbit

Reactivity

- Human, Mouse

Applications

- WB, IHC, IF, IP, ELISA

MW

- 39kD (Calculated)
- 45kD (Observed)

Isotype

- IgG, Kappa

Storage

Storage* -15°C to -25°C/1 year (Do not lower than -25°C)

Formulation PBS, 50% glycerol, 0.05% Proclin 300, 0.05% BSA

Recommended Dilution Ratios

IHC 1:1000-1:5000

WB 1:2000-1:10000

IF 1:200-1:1000

ELISA 1:5000-1:20000

IP 1:50-1:200

Basic Information

Clonality Monoclonal

Clone Number PT0430R

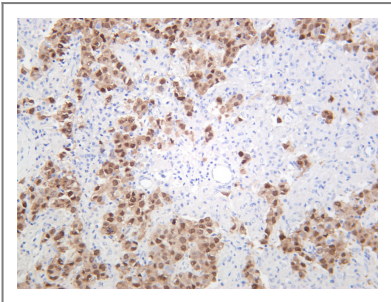
Immunogen Information

Specificity Endogenous

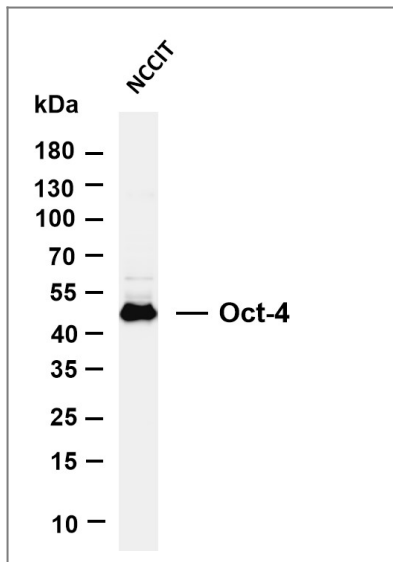
| Target Information

Gene name	POU5F1		
Protein Name	POU domain class 5 transcription factor 1		
	Organism	Gene ID	UniProt ID
	Human	5460 ;	Q01860 ;
	Mouse	18999 ;	P20263 ;
Cellular Localization	Nucleus		
Tissue specificity	Expressed in developing brain. Highest levels found in specific cell layers of the cortex, the olfactory bulb, the hippocampus and the cerebellum. Low levels of expression in adult tissues.		
Function	Function:Transcription factor that binds to the octamer motif (5'-ATTTGCAT-3'). Forms a trimeric complex with SOX2 on DNA and controls the expression of a number of genes involved in embryonic development such as YES1, FGF4, UTF1 and ZFP206. Critical for early embryogenesis and for embryonic stem cell pluripotency.,miscellaneous:Several pseudogenes of POU5F1 have been described on chromosomes 1, 3, 8, 10 and 12. 2 of them, localized in chromosomes 8 and 10, are transcribed in cancer tissues but not in normal ones and may be involved in the regulation of POU5F1 gene activity in carcinogenesis.,online information:Oct-4 entry,PTM:Sumoylation enhances the protein stability, DNA binding and transactivation activity. Sumoylation is required for enhanced YES1 expression.,similarity:Belongs to the POU transcription factor family. Class-5 subfamily.,similarity:Contains 1 homeobox DNA-binding domain.,similarity:Contains 1 POU-specific domain.,subcellular location:Expressed in a diffuse and slightly punctuate pattern.,subunit:Interacts with UBE2L.,tissue specificity:Expressed in developing brain. Highest levels found in specific cell layers of the cortex, the olfactory bulb, the hippocampus and the cerebellum. Low levels of expression in adult tissues.,		

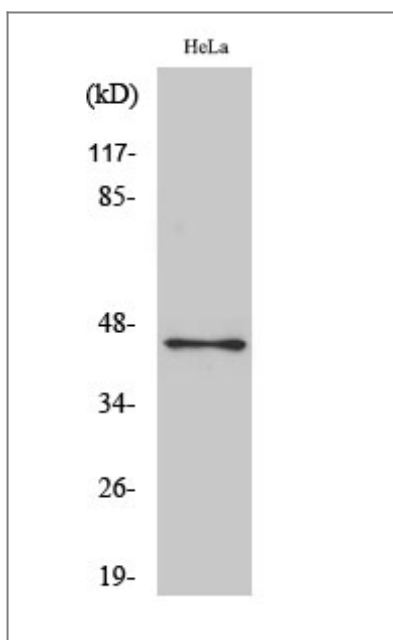
| Validation Data



Human seminoma was stained with anti-Oct-4 rabbit antibody



Various whole cell lysates were separated by 4-20% SDS-PAGE, and the membrane was blotted with anti-Oct-4 antibody. The HRP-conjugated Goat anti-Rabbit IgG(H + L) antibody was used to detect the antibody. Lane 1: NCCIT Predicted band size: 39kDa Observed band size: 45kDa



Western Blot analysis of HeLa cells using Oct-3/4 Antibody diluted at 1:1000

Contact information

Orders: order@immunoway.com
 Support: tech@immunoway.com
 Telephone: 877-594-3616 (Toll Free), 408-747-0185
 Website: <http://www.immunoway.com>
 Address: 2200 Ringwood Ave San Jose, CA 95131 USA



Please scan the QR code to access additional product information:
Oct-4 (PT0430R)
PT™ Rabbit mAb