

HLA-DR (PT0377R) PT® Rabbit mAb

CatalogNo: YM8228 **Recombinant** 

Key Features

Host Species

- Rabbit

Reactivity

- Human,Rat,

Applications

- WB,IHC,IF,IP,ELISA

MW

- 29kD (Calculated)
- 37kD (Observed)

Isotype

- IgG,Kappa

Recommended Dilution Ratios

IHC 1:1000-1:4000

WB 1:1000-1:5000

IF 1:200-1:1000

ELISA 1:5000-1:20000

IP 1:50-1:200,

Storage

Storage* -15°C to -25°C/1 year(Do not lower than -25°C)

Formulation PBS, 50% glycerol, 0.05% Proclin 300, 0.05%BSA

Basic Information

Clonality Monoclonal

Clone Number PT0377R

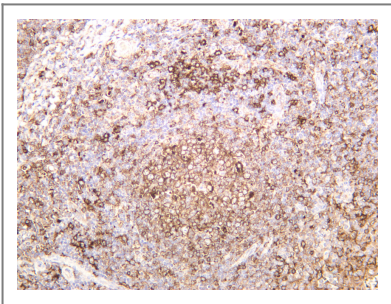
Immunogen Information

Specificity Endogenous

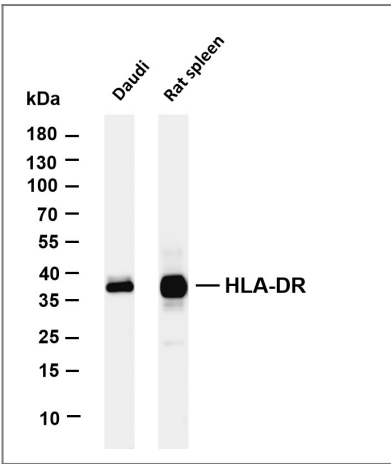
Target Information

Gene name	HLA-DRA HLA-DRA1		
Protein Name	HLA class II histocompatibility antigen, DR alpha chain (MHC class II antigen DRA)		
	Organism	Gene ID	UniProt ID
	Human	3122 ;	P01903 ;
Cellular Localization	Membrane		
Tissue specificity	Expressed in professional APCs: macrophages, dendritic cells and B cells (at protein level) (PubMed:31495665, PubMed:15322540, PubMed:23783831). Expressed in thymic epithelial cells (at protein level) (PubMed:23783831).		
Function	Disease:Genetic variations in HLA-DRA are associated with susceptibility to hepatitis B virus infection (HBV infection) [MIM:610424]. Approximately one third of all cases of cirrhosis and half of all cases of hepatocellular carcinoma can be attributed to chronic HBV infection. HBV infection may result in subclinical or asymptomatic infection, acute self-limited hepatitis, or fulminant hepatitis requiring liver transplantation.,polymorphism:The following alleles of DRA are known: DRA*0101 and DRA*0102. The sequence shown is that of DRA*0101.,similarity:Belongs to the MHC class II family.,similarity:Contains 1 Ig-like C1-type (immunoglobulin-like) domain.,subunit:Heterodimer of an alpha chain and a beta chain.,		

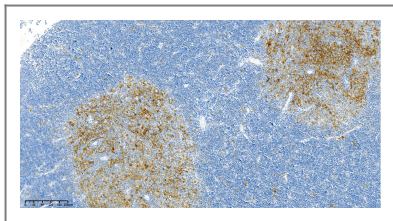
Validation Data



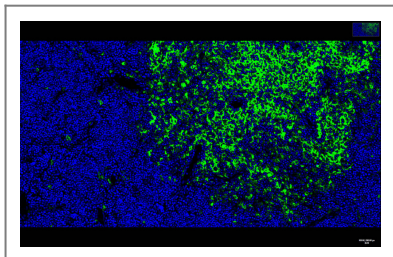
Human tonsil was stained with anti-HLA-DR rabbit antibody



Various whole cell lysates were separated by 4-20% SDS-PAGE, and the membrane was blotted with anti-HLA-DR antibody. The HRP-conjugated Goat anti-Rabbit IgG(H + L) antibody was used to detect the antibody. Lane 1: Daudi Lane 2: Rat spleen Predicted band size: 29kDa Observed band size: 37kDa



Rat thymus was stained with anti-HLA-DR Rabbit antibody



Rat thymus was stained with anti-HLA-DR Rabbit antibody

| Contact information

Orders: order@immunoway.com
Support: tech@immunoway.com
Telephone: 877-594-3616 (Toll Free), 408-747-0185
Website: <http://www.immunoway.com>
Address: 2200 Ringwood Ave San Jose, CA 95131 USA



Please scan the QR code
to access additional
product information:
HLA-DR (PT0377R)
PT® Rabbit mAb

For Research Use Only. Not for Use in Diagnostic Procedures.

[Antibody](#) | [ELISA Kits](#) | [Protein](#) | [Reagents](#)