

## BMP-2 (PT0362R) PT™ Rabbit mAb

CatalogNo: YM8215 **Recombinant** 

### Key Features

#### Host Species

- Rabbit

#### Reactivity

- Human, Mouse, Rat

#### Applications

- WB, IHC, IF, ELISA

#### MW

- 45kD, 13kD (Calculated)
- 30kD, 13kD (Observed)

#### Isotype

- IgG, Kappa

### Storage

**Storage\*** -15°C to -25°C/1 year (Do not lower than -25°C)**Formulation** PBS, 50% glycerol, 0.05% Proclin 300, 0.05% BSA

### Recommended Dilution Ratios

**IHC 1:200-1:1000****WB 1:1000-1:5000****IF 1:200-1:1000****ELISA 1:5000-1:20000**

### Basic Information

**Clonality** Monoclonal**Clone Number** PT0362R

### Immunogen Information

**Immunogen** Synthesized peptide derived from C-terminal BMP 2**Specificity** Endogenous

## Target Information

**Gene name** BMP2

**Protein Name** Bone morphogenetic protein 2

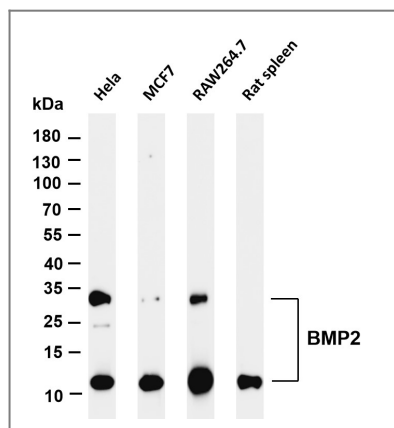
Organism	Gene ID	UniProt ID
Human	<a href="#">650</a> ;	<a href="#">P12643</a> ;
Mouse	<a href="#">12156</a> ;	<a href="#">P21274</a> ;
Rat	<a href="#">29373</a> ;	<a href="#">P49001</a> ;

**Cellular Localization** Secreted

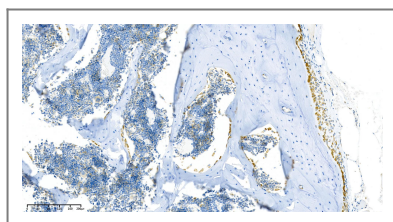
**Tissue specificity** Particularly abundant in lung, spleen and colon and in low but significant levels in heart, brain, placenta, liver, skeletal muscle, kidney, pancreas, prostate, ovary and small intestine.

**Function** Function:Induces cartilage and bone formation.,online information:Bone morphogenetic protein 2 entry,similarity:Belongs to the TGF-beta family.,subunit:Homodimer; disulfide-linked. Interacts with GREM2 (By similarity) and SOSTDC1.,tissue specificity:Particularly abundant in lung, spleen and colon and in low but significant levels in heart, brain, placenta, liver, skeletal muscle, kidney, pancreas, prostate, ovary and small intestine.,

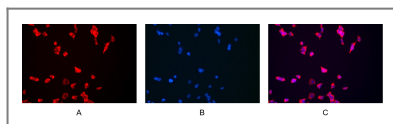
## Validation Data



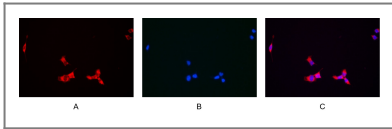
Various whole cell lysates were separated by 4-20% SDS-PAGE, and the membrane was blotted with anti-BMP2 antibody. The HRP-conjugated Goat anti-Rabbit IgG (H + L) antibody was used to detect the antibody. Lane 1: HeLa Lane 2: MCF7 Lane 3: RAW264.7 Lane 4: Rat spleen Predicted band size: 45,13kDa Observed band size: 30,13kDa



Rat spine was stained with anti-BMP2 Rabbit antibody



Immunofluorescence analysis of HEK293. Picture A: BMP2 antibody (red). Picture B: DAPI (blue). Picture C: Merge of A+B



Immunofluorescence analysis of HEK293. Picture A: BMP2 antibody (red).  
Picture B: DAPI (blue). Picture C: Merge of A+B

## Contact information

Orders: [order@immunoway.com](mailto:order@immunoway.com)  
Support: [tech@immunoway.com](mailto:tech@immunoway.com)  
Telephone: 877-594-3616 (Toll Free), 408-747-0185  
Website: <http://www.immunoway.com>  
Address: 2200 Ringwood Ave San Jose, CA 95131 USA



Please scan the QR code  
to access additional  
product information:  
**BMP-2 (PT0362R)**  
**PT™ Rabbit mAb**

For Research Use Only. Not for Use in Diagnostic Procedures.

[Antibody](#) | [ELISA Kits](#) | [Protein](#) | [Reagents](#)