

EpCAM (PT0290R) PT™ Rabbit mAb

CatalogNo: YM8166 **Recombinant** 

Key Features

Host Species

- Rabbit

Reactivity

- Human, Mouse, Rat,

Applications

- WB, IHC, IF, IP, ELISA

MW

- 35kD (Calculated)
- 40kD (Observed)

Isotype

- IgG, Kappa

Recommended Dilution Ratios

IHC 1:200-1:1000

WB 1:1000-1:5000

IF 1:200-1:1000

ELISA 1:5000-1:20000

IP 1:50-1:200,

Storage

Storage* -15°C to -25°C/1 year (Do not lower than -25°C)

Formulation PBS, 50% glycerol, 0.05% Proclin 300, 0.05% BSA

Basic Information

Clonality Monoclonal

Clone Number PT0290R

Immunogen Information

Sequence Epithelial cell adhesion molecule

Specificity Endogenous

| Target Information

Gene name EPCAM GA733-2 M1S2 M4S1 MIC18 TACSTD1 TROP1

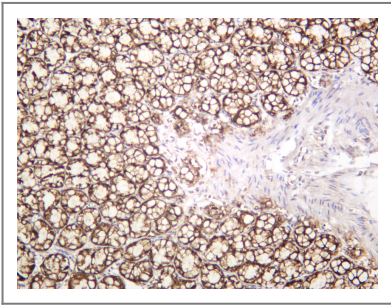
Protein Name Epithelial cell adhesion molecule

Organism	Gene ID	UniProt ID
Human	4072 ;	P16422 ;
Mouse	17075 ;	Q99JW5 ;

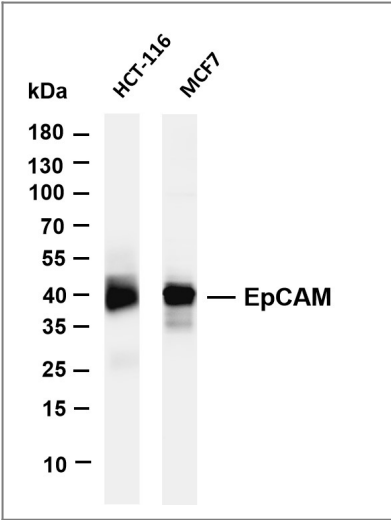
Cellular Localization Membrane

Tissue specificity Highly and selectively expressed by undifferentiated rather than differentiated embryonic stem cells (ESC). Levels rapidly diminish as soon as ESC's differentiate (at protein levels). Expressed in almost all epithelial cell membranes but not on mesodermal or neural cell membranes. Found on the surface of adenocarcinoma.

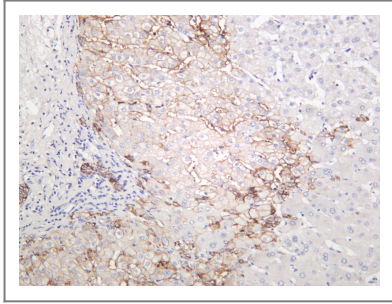
| Validation Data



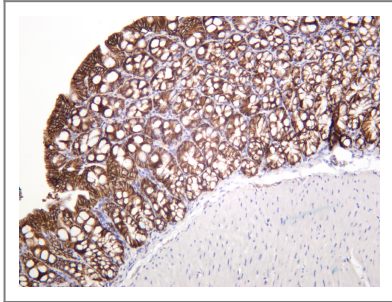
Rat colon was stained with anti-EpCAM rabbit antibody



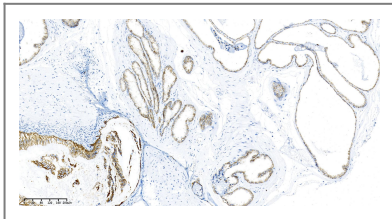
Various whole cell lysates were separated by 4-20% SDS-PAGE, and the membrane was blotted with anti-EpCAM antibody. The HRP-conjugated Goat anti-Rabbit IgG(H + L) antibody was used to detect the antibody. Lane 1: HCT-116 Lane 2: MCF7 Predicted band size: 35kDa Observed band size: 40kDa



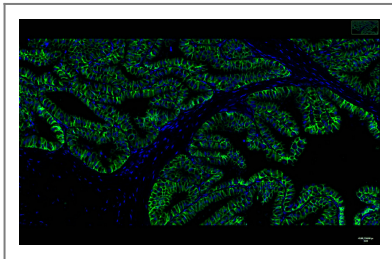
Human liver was stained with anti-EpCAM rabbit antibody



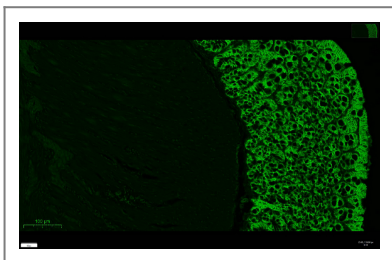
Mouse colon was stained with anti-EpCAM rabbit antibody



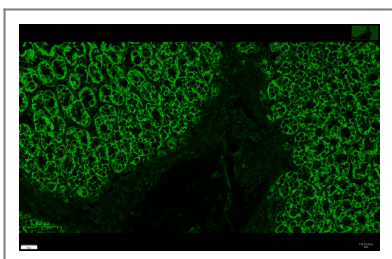
Rat prostate was stained with anti-EpCAM Rabbit antibody



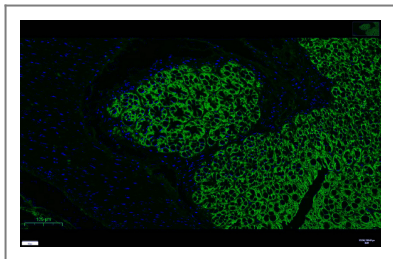
Rat prostate was stained with anti-EpCAM Rabbit antibody



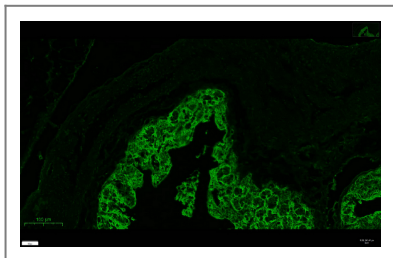
Mouse colon was stained with anti-EpCAM rabbit antibody



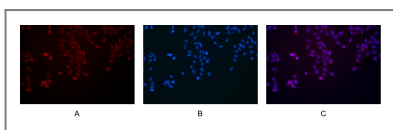
Rat colon was stained with anti-EpCAM rabbit antibody



Mouse colon was stained with anti-EpCAM rabbit antibody



Rat colon was stained with anti-EpCAM rabbit antibody



Immunofluorescence analysis of HEK293. Picture A: EpCAM antibody (red). Picture B: DAPI (blue). Picture C: Merge of A+B

Contact information

Orders: order@immunoway.com
 Support: tech@immunoway.com
 Telephone: 877-594-3616 (Toll Free), 408-747-0185
 Website: <http://www.immunoway.com>
 Address: 2200 Ringwood Ave San Jose, CA 95131 USA



Please scan the QR code to access additional product information:
EpCAM (PT0290R)
PT™ Rabbit mAb

For Research Use Only. Not for Use in Diagnostic Procedures.

[Antibody](#) | [ELISA Kits](#) | [Protein](#) | [Reagents](#)