

NRAS (PT0241R) PT™ Rabbit mAb

CatalogNo: YM8151 **Recombinant** 

Key Features

Host Species

- Rabbit

Reactivity

- Human, Mouse, Rat

Applications

- WB, IHC, IF, IP, ELISA

MW

- 22kD (Calculated)
- 22kD (Observed)

Isotype

- IgG, Kappa

Storage

Storage* -15°C to -25°C/1 year (Do not lower than -25°C)**Formulation** PBS, 50% glycerol, 0.05% Proclin 300, 0.05% BSA

Recommended Dilution Ratios

IHC 1:200-1:1000**WB 1:1000-1:5000****IF 1:200-1:1000****ELISA 1:5000-1:20000****IP 1:50-1:200,**

Basic Information

Clonality Monoclonal**Clone Number** PT0241R

Immunogen Information

Immunogen The specific immunogen used to produce this antibody is proprietary information.**Specificity** Endogenous

Target Information

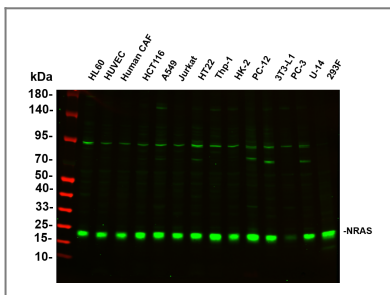
Gene name NRAS HRAS1

Protein Name GTPase NRas (Transforming protein N-Ras)

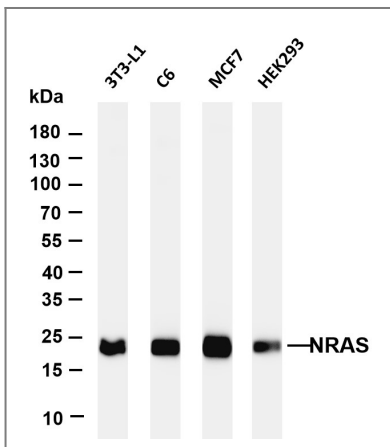
Organism	Gene ID	UniProt ID
Human	4893 ;	P01111 ;
Mouse		P08556 ;
Rat		Q04970 ;

Cellular Localization Membrane

Validation Data



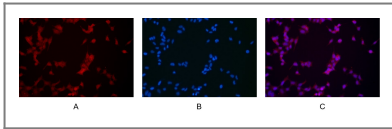
Various whole cell lysates were separated by 4-20% SDS-PAGE, and the primary antibody was used at 4°C over night with a 1:2500 dilution . The Dylight 800-conjugated Goat anti-Rabbit antibody (Cat:RS23920) was used to detect the antibody. Lane1: HL60 - Human promyelocytic leukemia cell Lane2: HUVEC - Human umbilical vein endothelial cell Lane3: Human CAF - Human cancer-associated fibroblast Lane4: HCT116 - Human colorectal carcinoma Lane5: A549 - Human lung carcinoma Lane6: Jurkat - Human T lymphocyte leukemia Lane7: HT22 - Mouse hippocampal neuronal Lane8: Thp-1 - Human monocytic leukemia Lane9: HK-2 - Human proximal tubular epithelial Lane10: PC-12 - Rat adrenal pheochromocytoma Lane11: 3T3-L1 - Mouse embryonic fibroblast Lane12: PC-3 - Human prostate adenocarcinoma Lane13: U-14 - Mouse cervical carcinoma Lane14: 293F - HEK293 derivative, adapted for suspension culture Predicted band size: 22kDa Observed band size: 22kDa



Various whole cell lysates were separated by 4-20% SDS-PAGE, and the membrane was blotted with anti-NRAS antibody. The HRP-conjugated Goat anti-Rabbit IgG (H + L) antibody was used to detect the antibody. Lane 1: 3T3-L1 Lane 2: C6 Lane 3: MCF7 Lane 4: HEK293 Predicted band size: 22kDa Observed band size: 22kDa



Human colon was stained with anti-Ras rabbit antibody



Immunofluorescence analysis of HEK293. Picture A: Ras antibody (red).
Picture B: DAPI (blue). Picture C: Merge of A+B

Contact information

Orders: order@immunoway.com
Support: tech@immunoway.com
Telephone: 877-594-3616 (Toll Free), 408-747-0185
Website: <http://www.immunoway.com>
Address: 2200 Ringwood Ave San Jose, CA 95131 USA



Please scan the QR code
to access additional
product information:
NRAS (PT0241R)
PT™ Rabbit mAb

For Research Use Only. Not for Use in Diagnostic Procedures.

[Antibody](#) | [ELISA Kits](#) | [Protein](#) | [Reagents](#)