

Cathepsin D (PT0185R) PT™ Rabbit mAb

CatalogNo: YM8115 **Recombinant** 

Key Features

Host Species

- Rabbit

Reactivity

- Human, Mouse, Rat

Applications

- WB, IHC, IF, IP, ELISA

MW

- 44kD (Calculated)
- 28,44kD (Observed)

Isotype

- IgG, Kappa

Storage

Storage* -15°C to -25°C/1 year (Do not lower than -25°C)**Formulation** PBS, 50% glycerol, 0.05% Proclin 300, 0.05% BSA

Recommended Dilution Ratios

IHC 1:200-1:1000**WB 1:1000-1:5000****IF 1:200-1:1000****ELISA 1:5000-1:20000****IP 1:50-1:200,**

Basic Information

Clonality Monoclonal**Clone Number** PT0185R

Immunogen Information

Specificity Endogenous

Target Information

Gene name CTSD

Protein Name Cathepsin D

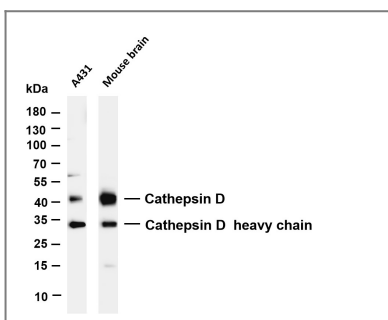
Organism	Gene ID	UniProt ID
Human	1509 ;	P07339 ;
Mouse	13033 ;	P18242 ;

Cellular Localization Secreted

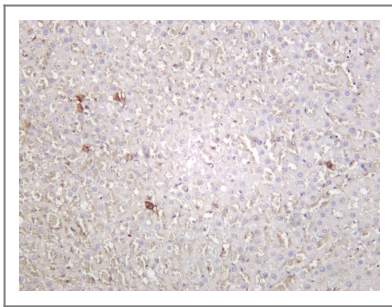
Tissue specificity Expressed in the aorta extracellular space (at protein level) (PubMed:20551380). Expressed in liver (at protein level) (PubMed:1426530).

Function Catalytic activity:Specificity similar to, but narrower than, that of pepsin A. Does not cleave the 4-Gln-|-His-5 bond in B chain of insulin.,Disease:Defects in CTSD are the cause of neuronal ceroid lipofuscinosis 10 (CLN10) [MIM:610127]; also known as neuronal ceroid lipofuscinosis due to cathepsin D deficiency. The neuronal ceroid lipofuscinosis are a group of progressive neurodegenerative diseases in children and in adults, characterized by visual and mental decline, motor disturbance, epilepsy and behavioral changes.,Function:Acid protease active in intracellular protein breakdown. Involved in the pathogenesis of several diseases such as breast cancer and possibly Alzheimer disease.,polymorphism:The Val-58 allele is significantly overrepresented in demented patients (11.8%) compared with non-demented controls (4.9%). Carriers of the Val-58 allele have a 3.1-fold increased risk for developing AD than non-carriers.,similarity:Belongs to the peptidase A1 family.,subcellular location:Identified by mass spectrometry in melanosome fractions from stage I to stage IV.,subunit:Consists of a light chain and a heavy chain.,

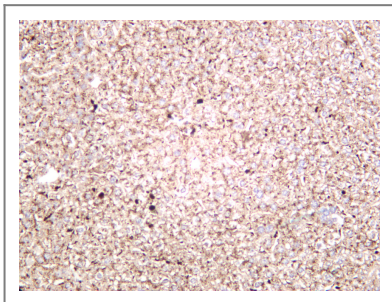
Validation Data



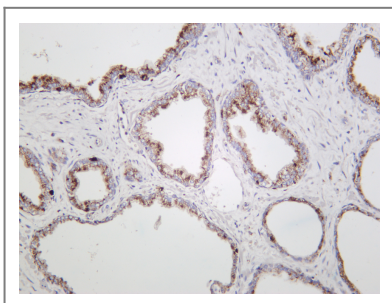
Various whole cell lysates were separated by 4-20% SDS-PAGE, and the membrane was blotted with anti-Cathepsin D (PT0185R) antibody. The HRP-conjugated Goat anti-Rabbit IgG(H + L) antibody was used to detect the antibody. Lane 1: A431 Lane 2: Mouse brain Predicted band size: 44kDa Observed band size: 44kDa



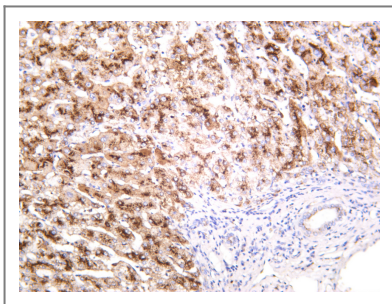
Rat liver was stained with anti-Cathepsin D rabbit antibody



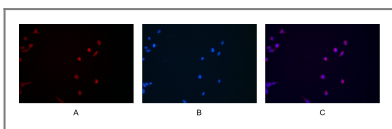
Mouse liver was stained with anti-Cathepsin D rabbit antibody



Human prostate was stained with anti-Cathepsin D rabbit antibody



Human liver was stained with anti-Cathepsin D rabbit antibody



Immunofluorescence analysis of HEK293. Picture A: Cathepsin D antibody (red). Picture B: DAPI (blue). Picture C: Merge of A+B

Contact information

Orders: order@immunoway.com
Support: tech@immunoway.com
Telephone: 877-594-3616 (Toll Free), 408-747-0185
Website: <http://www.immunoway.com>
Address: 2200 Ringwood Ave San Jose, CA 95131 USA



Please scan the QR code to access additional product information:
Cathepsin D (PT0185R) PT™ Rabbit mAb

