

Glutaminase C (PT0168R) PT® Rabbit mAb

CatalogNo: YM8102 **Recombinant** 

Key Features

Host Species

- Rabbit

Reactivity

- Human, Mouse, Rat,

Applications

- WB, IHC, IF, IP, ELISA

MW

- 68kD (Calculated)
- 55-65kD (Observed)

Isotype

- IgG, Kappa

Recommended Dilution Ratios

IHC 1:200-1000

WB 1:1000-5000

IF 1:200-1000

ELISA 1:5000-20000

IP 1:50-200

Storage

Storage* -15°C to -25°C/1 year (Do not lower than -25°C)

Formulation PBS, 50% glycerol, 0.05% Proclin 300, 0.05% BSA

Basic Information

Clonality Monoclonal

Clone Number PT0168R

Immunogen Information

Specificity Endogenous

Target Information

Gene name GLS GLS1 KIAA0838

Protein Name GLSK

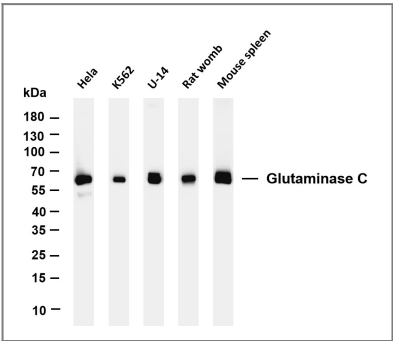
Organism	Gene ID	UniProt ID
Human	2744;	O94925;
Mouse	14660;	D3Z7P3;
Rat	24398;	P13264;

Cellular Localization Cytoplasm

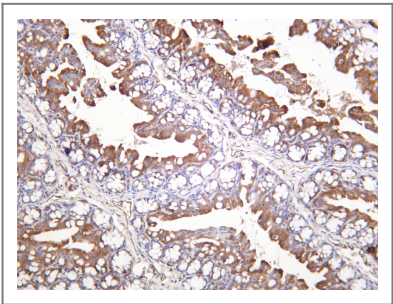
Tissue specificity Isoform 1 and isoform 3 are detected in brain cortex. Isoform 3 is highly expressed in astrocytoma, ganglioglioma and ependymoma. Isoform 1 is highly expressed in brain and kidney, but not detected in liver. Isoform 3 is highly expressed in heart and pancreas, detected at lower levels in placenta, lung, pancreas and kidney, but is not detected in liver. Isoform 2 is expressed in cardiac and skeletal muscle.

Function Catalytic activity:L-glutamine + H(2)O = L-glutamate + NH(3).,Function:Catalyzes the first reaction in the primary pathway for the renal catabolism of glutamine.,similarity:Belongs to the glutaminase family.,similarity:Contains 1 ANK repeat.,tissue specificity:KGA is expressed predominantly in brain and kidney but not in liver, GAC is expressed principally in cardiac muscle and pancreas but not in liver or brain, and GAM is expressed solely in cardiac and skeletal muscle.,

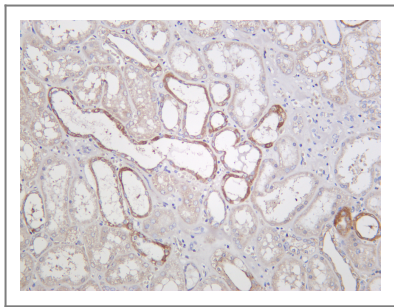
Validation Data



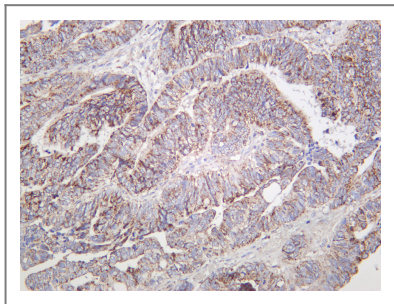
Various whole cell lysates were separated by 4-20% SDS-PAGE, and the membrane was blotted with anti-Glutaminase C antibody. The HRP-conjugated Goat anti-Rabbit IgG(H + L) antibody was used to detect the antibody. Lane 1: HeLa Lane 2: K562 Lane 3: U-14 Lane 4: Rat womb Lane 5: Mouse spleen Predicted band size: 68kDa Observed band size: 68kDa



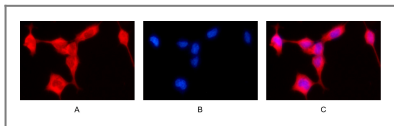
Mouse colon was stained with Anti-Glutaminase C rabbit antibody



Human kidney was stained with Anti-Glutaminase C rabbit antibody



Human colon carcinoma was stained with Anti-Glutaminase C rabbit antibody



Immunofluorescence analysis of HEK293. Picture A: Glutaminase C antibody (red). Picture B: DAPI (blue). Picture C: Merge of A+B

Contact information

Orders: order@immunoway.com
 Support: tech@immunoway.com
 Telephone: 877-594-3616 (Toll Free), 408-747-0185
 Website: <http://www.immunoway.com>
 Address: 2200 Ringwood Ave San Jose, CA 95131 USA



Please scan the QR code
 to access additional
 product information:
Glutaminase C
(PT0168R) PT®
Rabbit mAb

For Research Use Only. Not for Use in Diagnostic Procedures.

[Antibody](#) | [ELISA Kits](#) | [Protein](#) | [Reagents](#)