

## KLF4 (PT0167R) PT™ Rabbit mAb

CatalogNo: YM8101 **Recombinant** 

### Key Features

#### Host Species

- Rabbit

#### Reactivity

- Human, Mouse, Rat

#### Applications

- WB, IHC, IF, ELISA

#### MW

- 55kD (Calculated)  
60kD (Observed)

#### Isotype

- IgG, Kappa

### Storage

**Storage\*** -15°C to -25°C/1 year (Do not lower than -25°C)

**Formulation** PBS, 50% glycerol, 0.05% Proclin 300, 0.05% BSA

### Recommended Dilution Ratios

IHC 1:200-1000

WB 1:1000-5000

IF 1:200-1000

ELISA 1:5000-20000

### Basic Information

**Clonality** Monoclonal

**Clone Number** PT0167R

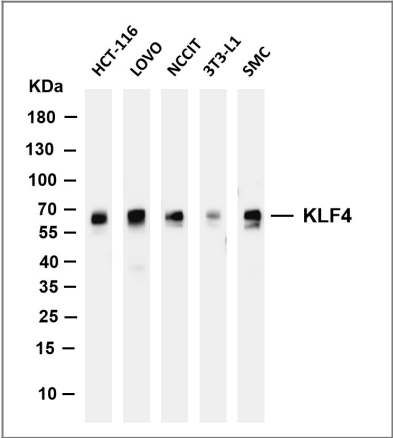
### Immunogen Information

**Specificity** Endogenous

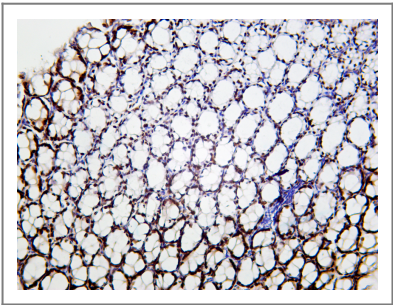
### Target Information

|                       |   |                       |                         |
|-----------------------|---|-----------------------|-------------------------|
| Gene name             | KLF4  |                       |                         |
| Protein Name          | Krueppel-like factor 4  |                       |                         |
|                       | Organism  | Gene ID               | UniProt ID              |
|                       | Human   | <a href="#">9314;</a> | <a href="#">O43474;</a> |
|                       | Mouse   |                       | <a href="#">Q60793;</a> |
| Cellular Localization | Nuclear   |                       |                         |
| Tissue specificity    | Cervix,Lung,Placenta,Substantia nigra,Tongue,   |                       |                         |
| Function              | Function:Transcription factor which acts as both an activator and repressor. Binds the CACCC core sequence. Binds to multiple sites in the 5'-flanking region of its own gene and can activate its own transcription. Required for establishing the barrier function of the skin and for postnatal maturation and maintenance of the ocular surface. Involved in the differentiation of epithelial cells and may also function in skeletal and kidney development.,similarity:Belongs to the krueppel C2H2-type zinc-finger protein family.,similarity:Contains 3 C2H2-type zinc fingers.,subunit:Interaction with the C-terminal domain of MUC1 enhances suppression of TP53/p53 transcription., |                       |                         |

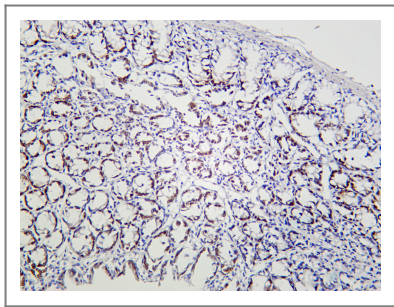
| Validation Data



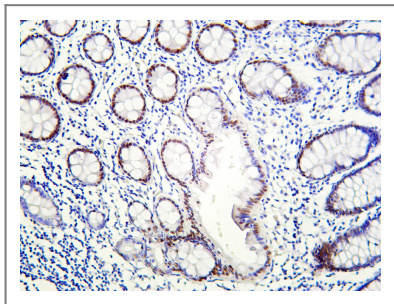
Various whole cell lysates were separated by 4-20% SDS-PAGE, and the membrane was blotted with anti-KLF4 antibody. The HRP-conjugated Goat anti-Rabbit IgG(H + L) antibody was used to detect the antibody. Lane 1: HCT-116 Lane 2: LOVO Lane 3: NCCIT Lane 4: 3T3-L1 Lane 5: SMC Predicted band size: 55kDa Observed band size: 60kDa



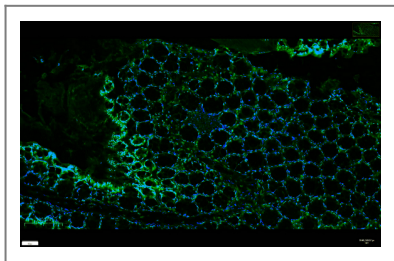
Mouse colon was stained with Anti-KLF4 rabbit antibody



Rat colon was stained with Anti-KLF4 rabbit antibody



Human colon was stained with Anti-KLF4 rabbit antibody



mouse colon was stained with Anti-KLF4 rabbit antibody

## | Contact information

Orders: [order@immunoway.com](mailto:order@immunoway.com)  
Support: [tech@immunoway.com](mailto:tech@immunoway.com)  
Telephone: 877-594-3616 (Toll Free), 408-747-0185  
Website: <http://www.immunoway.com>  
Address: 2200 Ringwood Ave San Jose, CA 95131 USA



Please scan the QR code  
to access additional  
product information:  
**KLF4 (PT0167R)**  
**PT™ Rabbit mAb**

For Research Use Only. Not for Use in Diagnostic Procedures.

[Antibody](#) | [ELISA Kits](#) | [Protein](#) | [Reagents](#)