

SP1 (PT0149R) PT[®] Rabbit mAb

CatalogNo: YM8086 **Recombinant** 

Key Features

Host Species

- Rabbit

Reactivity

- Human,

Applications

- WB,IHC,IF,IP,ELISA

MW

- 81kDa (Calculated)
100kD (Observed)

Isotype

- IgG,Kappa

Recommended Dilution Ratios

IHC 1:200-1000**WB 1:1000-5000****IF 1:200-1000****ELISA 1:5000-20000****IP 1:50-200**

Storage

Storage* -15°C to -25°C/1 year(Do not lower than -25°C)**Formulation** PBS, 50% glycerol, 0.05% Proclin 300, 0.05%BSA

Basic Information

Clonality Monoclonal**Clone Number** PT0149R

Immunogen Information

Specificity Endogenous

Target Information

Gene name SP1

Protein Name Transcription factor Sp1

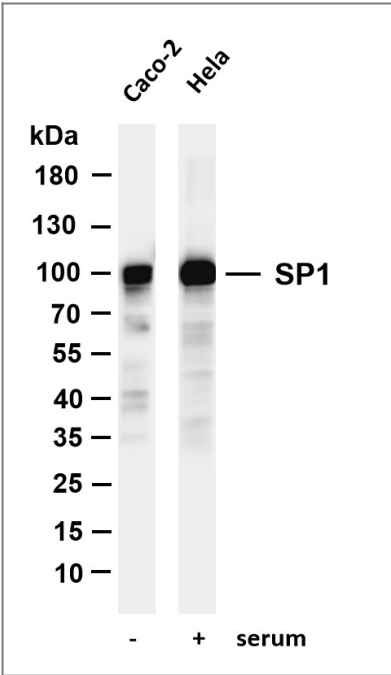
Organism	Gene ID	UniProt ID
Human	6667 ;	P08047 ;
Mouse	20683 ;	O89090 ;
Rat	24790 ;	Q01714 ;

Cellular Localization Nuclear

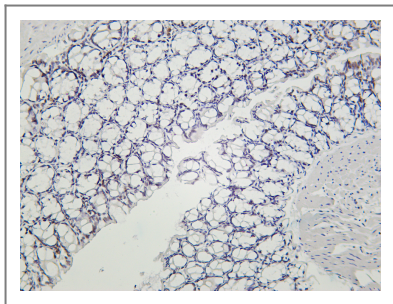
Tissue specificity Up-regulated in adenocarcinomas of the stomach (at protein level). Isoform 3 is ubiquitously expressed at low levels.

Function Function: Binds to GC box promoters elements and selectively activates mRNA synthesis from genes that contain functional recognition sites. Can interact with G/C-rich motifs from serotonin receptor promoter.,PTM: O-glycosylated; contains N-acetylglucosamine side chains.,similarity: Belongs to the Sp1 C2H2-type zinc-finger protein family.,similarity: Contains 3 C2H2-type zinc fingers.,subunit: Interacts with ATF7IP, ATF7IP2, POGZ, HCFC1, AATF and PHC2. Interacts with varicella-zoster virus IE62 protein and HIV-1 Vpr. Interacts with SV40 VP2/3 proteins. Interacts with SV40 major capsid protein VP1; this interaction leads to a cooperativity between the two proteins in DNA binding.,

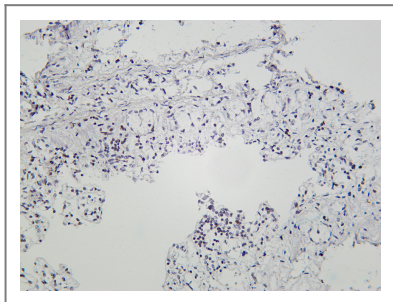
Validation Data



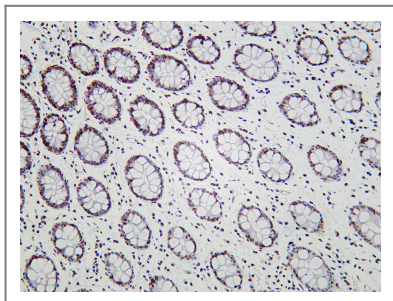
Various whole cell lysates were separated by 4-20% SDS-PAGE, and the membrane was blotted with anti-SP1 antibody. The HRP-conjugated Goat anti-Rabbit IgG(H + L) antibody was used to detect the antibody. Lane 1: Caco-2 Lane 2: HeLa treated with serum for 30 minutes Predicted band size: 100kDa Observed band size: 100kDa



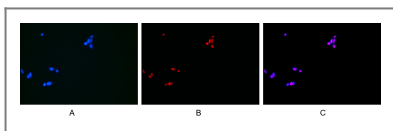
Mouse colon was stained with Anti-SP1 rabbit antibody



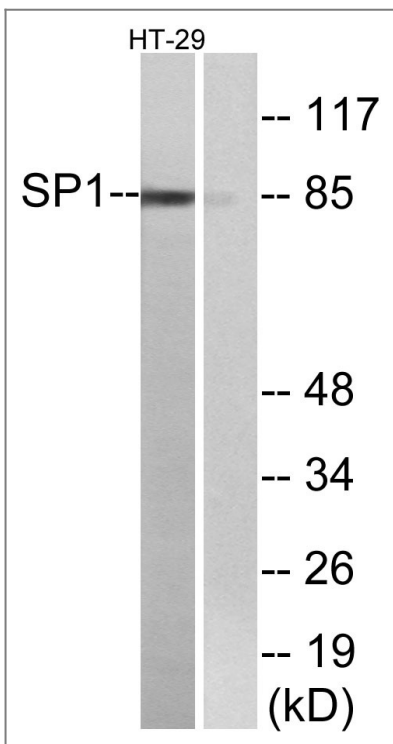
Rat colon was stained with Anti-SP1 rabbit antibody



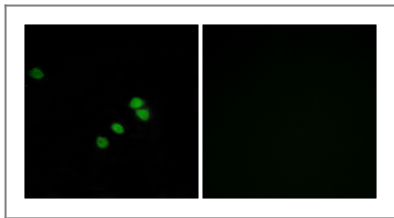
Human colon was stained with Anti-SP1 rabbit antibody



Immunofluorescence analysis of HEK293. Picture A: SP1 antibody (red). Picture B: DAPI (blue). Picture C: Merge of A+B



Western blot analysis of lysates from HT-29 cells, using SP1 Antibody. The lane on the right is blocked with the synthesized peptide.



Immunofluorescence analysis of HepG2 cells, using SP1 Antibody. The picture on the right is blocked with the synthesized peptide.

| Contact information

Orders: order@immunoway.com
Support: tech@immunoway.com
Telephone: 877-594-3616 (Toll Free), 408-747-0185
Website: <http://www.immunoway.com>
Address: 2200 Ringwood Ave San Jose, CA 95131 USA



Please scan the QR code to access additional product information:

SP1 (PT0149R) PT®
Rabbit mAb

For Research Use Only. Not for Use in Diagnostic Procedures.

[Antibody](#) | [ELISA Kits](#) | [Protein](#) | [Reagents](#)