

CD68 (PT0098R) PT® Rabbit mAb

CatalogNo: YM8057 **Recombinant** 

Key Features

Host Species

- Rabbit

Reactivity

- Human,

Applications

- WB,IHC,IF,IP,ELISA

MW

- 35kD (Calculated)
- 120kD (Observed)

Isotype

- IgG,Kappa

Recommended Dilution Ratios

IHC 1:1000-5000

WB 1:1000-5000

IF 1:200-1000

ELISA 1:5000-20000

IP 1:50-200

Storage

Storage* -15°C to -25°C/1 year(Do not lower than -25°C)**Formulation** PBS, 50% glycerol, 0.05% Proclin 300, 0.05%BSA

Basic Information

Clonality Monoclonal**Clone Number** PT0098R

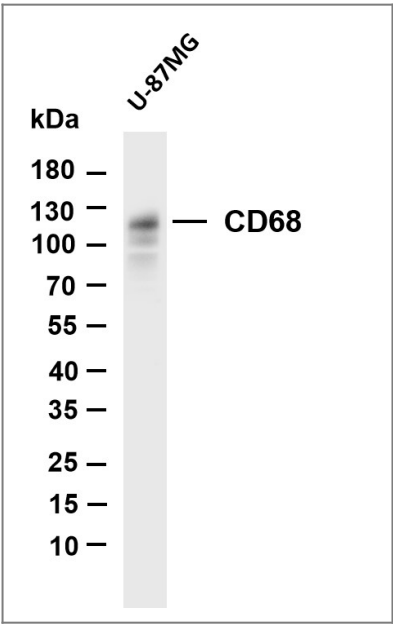
Immunogen Information

Specificity Endogenous

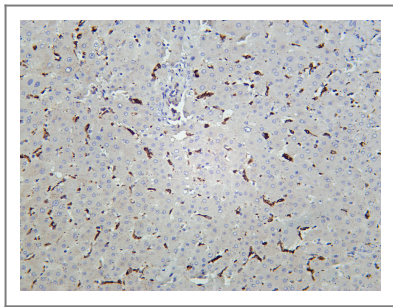
| Target Information

Gene name	CD68		
Protein Name	Macrosialin (Gp110) (CD antigen CD68)		
	Organism	Gene ID	UniProt ID
	Human	968 ;	P34810 ;
Cellular Localization	Membranous		
Tissue specificity	Highly expressed by blood monocytes and tissue macrophages. Also expressed in lymphocytes, fibroblasts and endothelial cells. Expressed in many tumor cell lines which could allow them to attach to selectins on vascular endothelium, facilitating their dissemination to secondary sites.		
Function	Function:Could play a role in phagocytic activities of tissue macrophages, both in intracellular lysosomal metabolism and extracellular cell-cell and cell-pathogen interactions. Bind to tissue- and organ-specific lectins or selectins, allowing homing of macrophage subsets to particular sites. Rapid recirculation of CD68 from endosomes, lysosomes to the plasma membrane may allow macrophages to crawl over selectin bearing substrates or other cells.,PTM:N- and O-glycosylated.,similarity:Belongs to the LAMP family.,tissue specificity:Highly expressed by blood monocytes and tissue macrophages. Also expressed in many tumor cell lines which could allow them to attach to selectins on vascular endothelium, facilitating their dissemination to secondary sites.,		

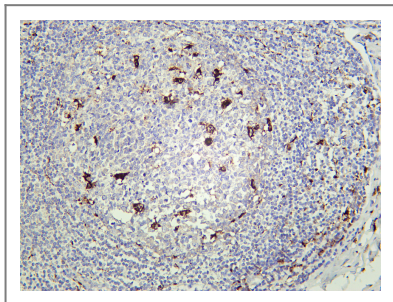
| Validation Data



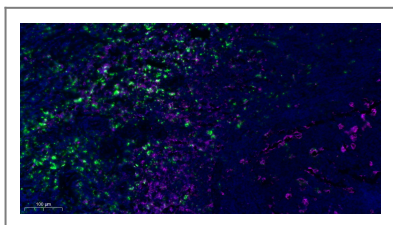
Various whole cell lysates were separated by 4-20% SDS-PAGE, and the membrane was blotted with anti-CD68 antibody. The HRP-conjugated Goat anti-Rabbit IgG(H + L) antibody was used to detect the antibody. Lane 1: U-87MG Predicted band size: 35kDa Observed band size: 120kDa



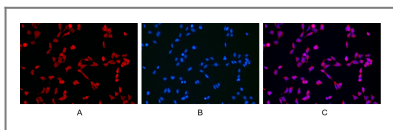
Human liver was stained with Anti-CD68 rabbit antibody



Human appendix was stained with Anti-CD68 rabbit antibody



Fluorescence multiplex immunohistochemical analysis of human tonsil tissue (formalin-fixed paraffin-embedded section). The immunostaining was performed by Sextuple-Fluorescence kit (RS0039, Immunoway). CD68 rabbit mAb (RED) and CD163 mouse mAb (GREEN) was tested with different TSA Fluorescence reagent. Microscopy and pseudocoloring of individual dyes was performed using a Slideviewer Imaging System (Excilone).



Immunofluorescence analysis of HEK293. Picture A: CD68 antibody (red). Picture B: DAPI (blue). Picture C: Merge of A+B

Contact information

Orders: order@immunoway.com
 Support: tech@immunoway.com
 Telephone: 877-594-3616 (Toll Free), 408-747-0185
 Website: <http://www.immunoway.com>
 Address: 2200 Ringwood Ave San Jose, CA 95131 USA



Please scan the QR code to access additional product information:
CD68 (PT0098R)
PT® Rabbit mAb

For Research Use Only. Not for Use in Diagnostic Procedures.

[Antibody](#) | [ELISA Kits](#) | [Protein](#) | [Reagents](#)