

Cyclin B1 (Phospho Ser126) (PT0070R) PT™ Rabbit mAb

CatalogNo: YM8038 **Recombinant** 

Key Features

Host Species

- Rabbit

Reactivity

- Human

Applications

- WB,IHC,IF,IP,ELISA

MW

- 48kD (Calculated)
- 55kD (Observed)

Isotype

- IgG,Kappa

Storage

Storage* -15°C to -25°C/1 year(Do not lower than -25°C)

Formulation PBS, 50% glycerol, 0.05% Proclin 300, 0.05%BSA

Recommended Dilution Ratios

IHC 1:500-1:2000

WB 1:1000-1:5000

IF 1:200-1:1000

ELISA 1:5000-1:20000

IP 1:50-1:200,

Basic Information

Clonality Monoclonal

Clone Number PT0070R

Immunogen Information

Sequence G2/mitotic-specific cyclin-B1

Specificity This antibody detects endogenous levels of Cyclin B1 only when phosphorylated at Ser126.This antibody does not recognize phosphorylated at other sites.

Target Information

Gene name CCNB1 CCNB

Protein Name G2/mitotic-specific cyclin-B1

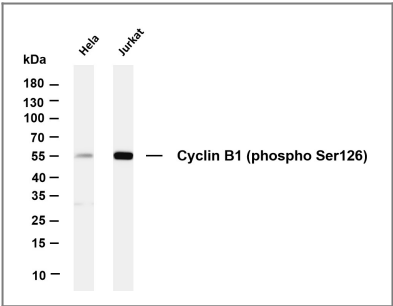
Organism	Gene ID	UniProt ID
Human	891 ;	P14635 ;
Mouse	268697 ;	P24860 ;
Rat	25203 ;	P30277 ;

Cellular Localization Cytoplasm, Nuclear

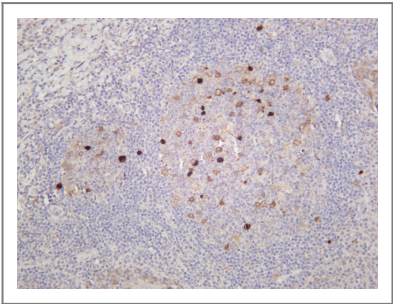
Tissue specificity Breast adenocarcinoma,Lung,Placenta,

Function developmental stage:Accumulates steadily during G2 and is abruptly destroyed at mitosis.,Function:Essential for the control of the cell cycle at the G2/M (mitosis) transition.,PTM:Ubiquitinated by the SCF(NIPA) complex during interphase, leading to its destruction. Not ubiquitinated during G2/M phases.,similarity:Belongs to the cyclin family.,similarity:Belongs to the cyclin family. Cyclin AB subfamily.,subunit:Interacts with the CDC2 protein kinase to form a serine/threonine kinase holoenzyme complex also known as maturation promoting factor (MPF). The cyclin subunit imparts substrate specificity to the complex. Binds HEI10. Interacts with catalytically active RALBP1 and CDC2 during mitosis to form an endocytotic complex during interphase.,

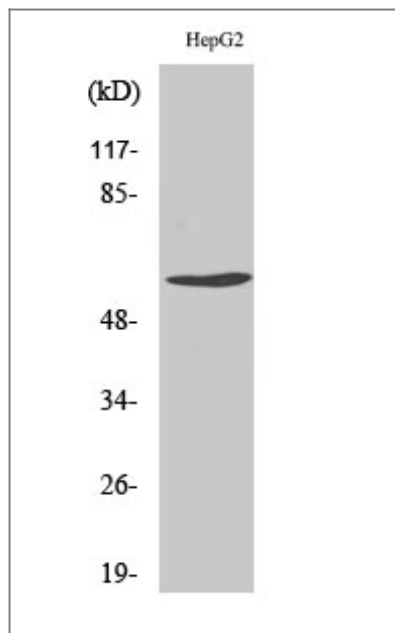
Validation Data



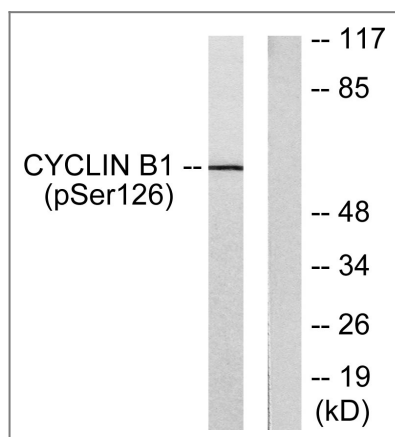
Various whole cell lysates were separated by 4-20% SDS-PAGE, and the membrane was blotted with anti-Cyclin B1 (phospho Ser126) antibody. The HRP-conjugated Goat anti-Rabbit IgG(H + L) antibody was used to detect the antibody. Lane 1: HeLa Lane 2: Jurkat Predicted band size: 48kDa Observed band size: 55kDa



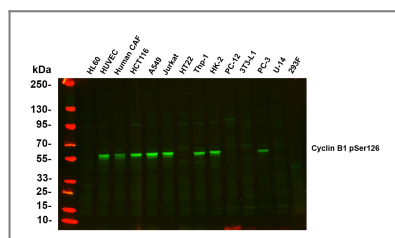
Human tonsil was stained with anti-Cyclin B1 (phospho Ser126) rabbit antibody



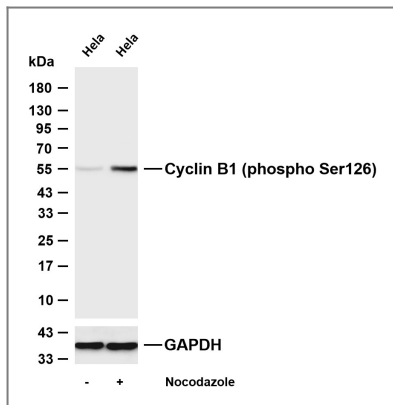
Western Blot analysis of various cells using Phospho-Cyclin B1 (S126) Antibody



Western blot analysis of lysates from NIH/3T3 cells treated with EGF 200ng/ml 15', using Cyclin B1 (Phospho-Ser126) Antibody. The lane on the right is blocked with the phospho peptide.



Various whole cell lysates were separated by 4-20% SDS-PAGE, and the primary antibody was used at 4°C, over night with a 1:2500 dilution . The Dylight 800-conjugated Goat anti-Rabbit antibody(Cat:RS23920) was used to detect the antibody. Lane1: HL60 - Human promyelocytic leukemia cell Lane2: HUVEC - Human umbilical vein endothelial cell Lane3: Human CAF - Human cancer-associated fibroblast Lane4: HCT116 - Human colorectal carcinoma Lane5: A549 - Human lung carcinoma Lane6: Jurkat - Human T lymphocyte leukemia Lane7: HT22 - Mouse hippocampal neuronal Lane8: Thp-1 - Human monocytic leukemia Lane9: HK-2 - Human proximal tubular epithelial Lane10: PC-12 - Rat adrenal pheochromocytoma Lane11: 3T3-L1 - Mouse embryonic fibroblast cells Lane12: PC-3 - Human prostate adenocarcinoma Lane13: U-14 - Mouse cervical carcinoma Lane14: 293F - HEK293 derivative, adapted for suspension culture Predicted band size: 48kDa Observed band size: 55kDa



Various whole cell lysates were separated by 4-20% SDS-PAGE, and the membrane was blotted with anti-Cyclin B1 (phospho Ser126) (PT0070R) antibody. The HRP-conjugated Goat anti-Rabbit IgG (H + L) antibody was used to detect the antibody. Lane 1: HeLa Lane 2: HeLa was treated with Nocodazole(100ng/ml) for 16 hours Predicted band size: 48kDa Observed band size: 55kDa

Contact information

Orders: order@immunoway.com
 Support: tech@immunoway.com
 Telephone: 877-594-3616 (Toll Free), 408-747-0185
 Website: <http://www.immunoway.com>
 Address: 2200 Ringwood Ave San Jose, CA 95131 USA



Please scan the QR code to access additional product information:
Cyclin B1 (Phospho Ser126) (PT0070R) PT™ Rabbit mAb

For Research Use Only. Not for Use in Diagnostic Procedures.

[Antibody](#) | [ELISA Kits](#) | [Protein](#) | [Reagents](#)