

## CDC37 (Phospho Ser13) (PT0060R) PT® Rabbit mAb

CatalogNo: YM8031 **Recombinant** 

### Key Features

**Host Species**

- Rabbit

**Reactivity**

- Human, Mouse, Rat,

**Applications**

- WB, IHC, IF, IP, ELISA

**MW**

- 44kD (Calculated)
- 44kD (Observed)

**Isotype**

- IgG, Kappa

### Recommended Dilution Ratios

**IHC 1:400-1000****WB 1:1000-5000****IF 1:200-1000****ELISA 1:5000-20000****IP 1:50-200**

### Storage

**Storage\*** -15°C to -25°C/1 year (Do not lower than -25°C)**Formulation** PBS, 50% glycerol, 0.05% Proclin 300, 0.05% BSA

### Basic Information

**Clonality** Monoclonal**Clone Number** PT0060R

### Immunogen Information

**Specificity** This antibody detects endogenous levels of CDC37 only when phosphorylated at Ser13.

## Target Information

**Gene name** CDC37

**Protein Name** Hsp90 co-chaperone Cdc37

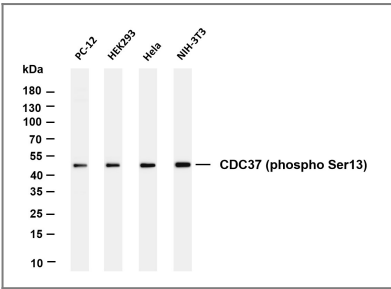
Organism	Gene ID	UniProt ID
Human	<a href="#">11140</a> ;	<a href="#">Q16543</a> ;
Mouse	<a href="#">12539</a> ;	<a href="#">Q61081</a> ;
Rat	<a href="#">114562</a> ;	<a href="#">Q63692</a> ;

**Cellular Localization** Cytoplasm

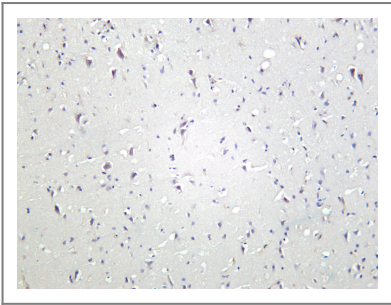
**Tissue specificity** Lymph,Placenta,

**Function** Function:Co-chaperone that binds to numerous kinases and promotes their interaction with the Hsp90 complex, resulting in stabilization and promotion of their activity.,PTM:Constitutively sumoylated by UBE2I.,similarity:Belongs to the CDC37 family.,subunit:Forms a complex with Hsp90. Interacts with AR, CDK4, CDK6, EIF2AK1 and RB1.,

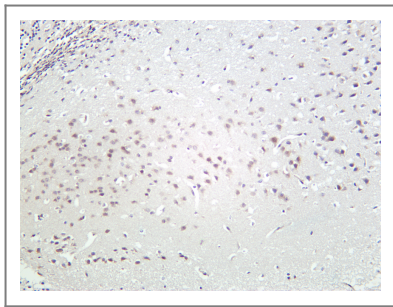
## Validation Data



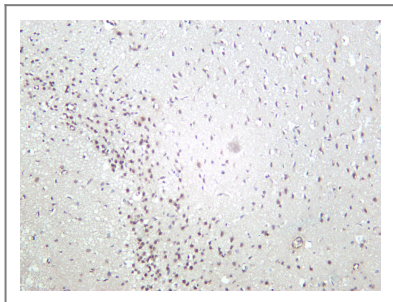
Various whole cell lysates were separated by 4-20% SDS-PAGE, and the membrane was blotted with anti-CDC37 (phospho Ser13) antibody. The HRP-conjugated Goat anti-Rabbit IgG(H + L) antibody was used to detect the antibody. Lane 1: PC-12 Lane 2: HEK293 Lane 3: HeLa Lane 4: NIH-3T3 Predicted band size: 44kDa Observed band size: 44kDa



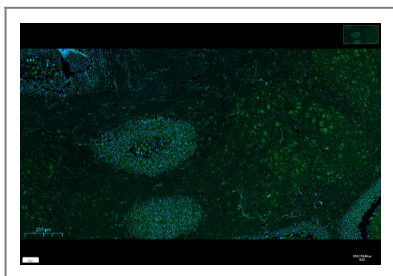
Human brain was stained with Anti-CDC37 (phospho Ser13) rabbit antibody



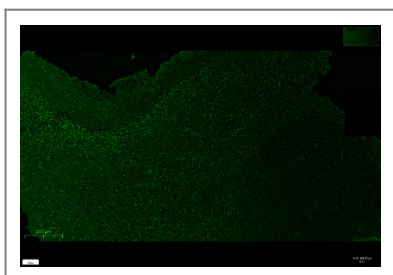
Mouse brain was stained with Anti-CDC37 (phospho Ser13) rabbit antibody



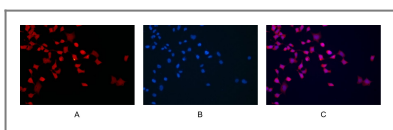
Rat brain was stained with Anti-CDC37 (phospho Ser13) rabbit antibody



mouse brain was stained with Anti-CDC37 (phospho Ser13) rabbit antibody



rat brain was stained with Anti-CDC37 (phospho Ser13) rabbit antibody



Immunofluorescence analysis of HEK293. Picture A: CDC37 (phospho Ser13) antibody (red). Picture B: DAPI (blue). Picture C: Merge of A+B

## Contact information

Orders: [order@immunoway.com](mailto:order@immunoway.com)  
 Support: [tech@immunoway.com](mailto:tech@immunoway.com)  
 Telephone: 877-594-3616 (Toll Free), 408-747-0185  
 Website: <http://www.immunoway.com>  
 Address: 2200 Ringwood Ave San Jose, CA 95131 USA



Please scan the QR code  
 to access additional  
 product information:  
**CDC37 (Phospho  
 Ser13) (PT0060R)  
 PT® Rabbit mAb**

