

## Iba 1 (PTR1347) Mouse mAb

CatalogNo: YM4765

### Key Features

#### Host Species

- Mouse

#### Reactivity

- Human, Mouse, Rat

#### Applications

- IHC, WB, IF, ELISA

#### MW

- 16kD (Calculated)
- 17kD (Observed)

#### Isotype

- IgG1, Kappa

### Recommended Dilution Ratios

**IHC 1:200-1000**

**WB 1:500-2000**

**IF 1:100-500**

**ELISA 1:1000-5000**

### Storage

**Storage\*** -15°C to -25°C/1 year(Do not lower than -25°C)

**Formulation** PBS, 50% glycerol, 0.05% Proclin 300, 0.05%BSA

### Basic Information

**Clonality** Monoclonal

**Clone Number** PTR1347

### Immunogen Information

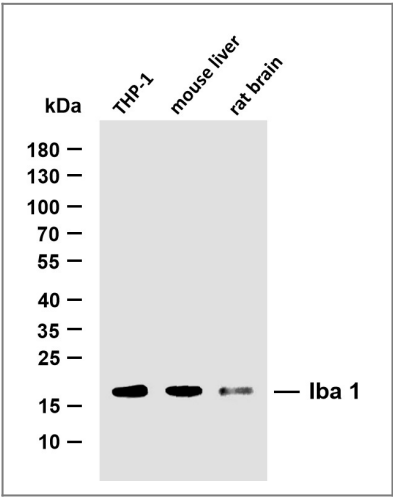
**Immunogen** Synthesized peptide derived from part region of human protein AA range: 50-147

**Specificity** This antibody detects endogenous levels of Iba 1 protein.

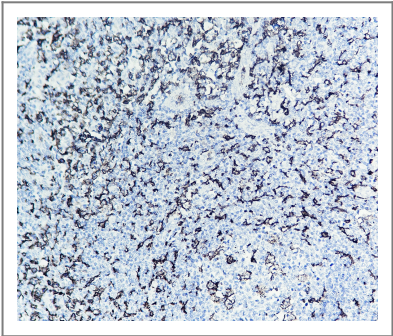
## Target Information

Gene name	AIF1 G1 IBA1		
Protein Name	Allograft inflammatory factor 1 (AIF-1) (Ionized calcium-binding adapter molecule 1) (Protein G1)		
	Organism	Gene ID	UniProt ID
	Human	<a href="#">199;</a>	<a href="#">P55008;</a>
	Mouse	<a href="#">11629;</a>	<a href="#">O70200;</a>
	Rat	<a href="#">29427;</a>	<a href="#">P55009;</a>
Cellular Localization	Membranous		
Tissue specificity	Detected in T-lymphocytes and peripheral blood mononuclear cells.		
Function	Function:May play a role in macrophage activation and function.,PTM:Phosphorylated on serine residues.,similarity:Contains 2 EF-hand domains.,		

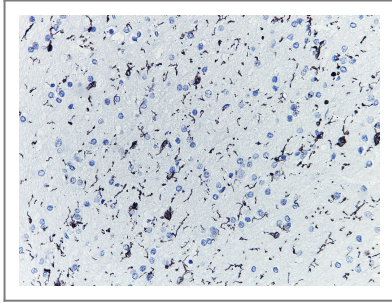
## Validation Data



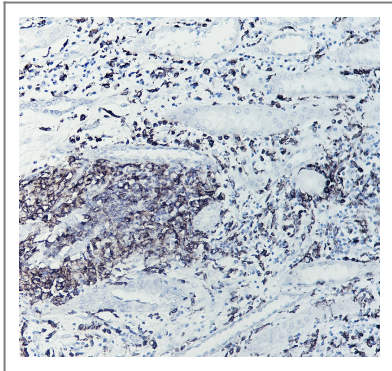
Various whole cell lysates were separated by 10% SDS-PAGE, and the membrane was blotted with anti-Iba 1 (PTR1347) antibody. The HRP-conjugated Goat anti-Mouse IgG(H + L) antibody was used to detect the antibody. Lane 1: THP-1 Lane 2: mouse liver Lane 3: rat brain



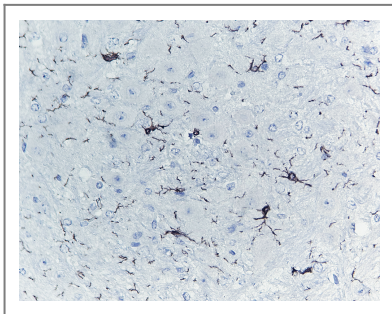
Human tonsil tissue was stained with Anti-Iba 1 (PTR1347) Antibody



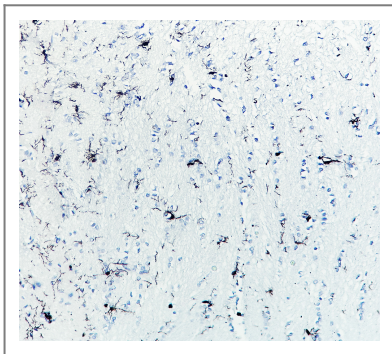
Human brain tissue was stained with Anti-Iba 1 (PTR1347) Antibody



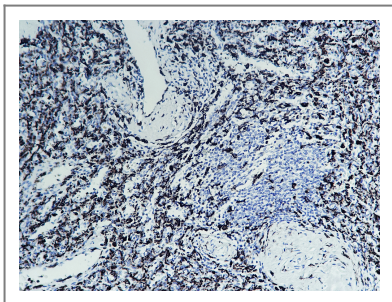
Human kidney tissue was stained with Anti-Iba 1 (PTR1347) Antibody



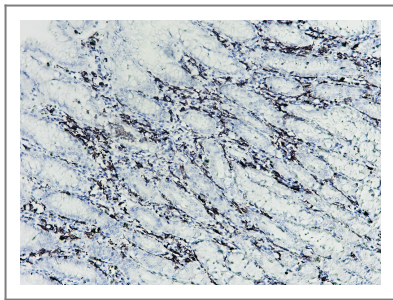
Mouse brain tissue was stained with Anti-Iba 1 (PTR1347) Antibody



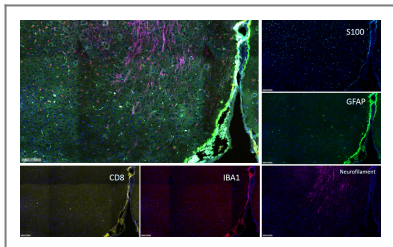
Rat brain tissue was stained with Anti-Iba 1 (PTR1347) Antibody



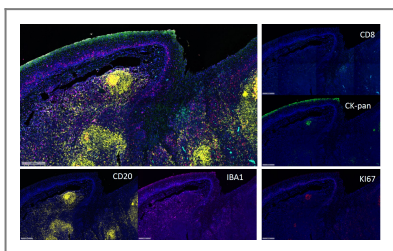
Human spleen tissue was stained with Anti-Iba 1 (PTR1347) Antibody



Human stomach tissue was stained with Anti-Iba 1 (PTR1347) Antibody



Fluorescence multiplex immunohistochemical analysis of Mouse brain tissue (formalin-fixed paraffin-embedded section). The immunostaining was performed by Sextuple-Fluorescence kit (RS0039, Immunoway). GFAP mouse mAb(YM4426 Immunoway) green, S100 mouse mAb(YM6987 Immunoway) cyan, Neurofilament mouse mAb(YM6897 Immunoway) purple, Iba 1 mouse mAb(YM4765 Immunoway) red, CD8 a mouse mAb(YM4815 Immunoway) yellow, The section was incubated in 5 rounds of staining; sequentially for Anti-antibodies; each using a separate fluorescent tyramide signal amplification system. EDTA based antigen retrieval (Immunoway YS0004, pH 9.0, 20 minutes) was used in between rounds of tyramide signal amplification to remove the antibody from the previous round, to avoid any cross-reactivity. DAPI (dark blue) was used as a nuclear counter stain. Microscopy and pseudocoloring of individual dyes was performed using a Slideviewer Imaging System (Excilone).



Fluorescence multiplex immunohistochemical analysis of Human tonsil tissue (formalin-fixed paraffin-embedded section). The immunostaining was performed by Pentuple-Fluorescence kit (RS0038, Immunoway). CK-pan mouse mAb(YM6815 Immunoway) green, Ki-67 rabbit mAb(YM7002 Immunoway) red, Iba 1 mouse mAb(YM4765 Immunoway) purple, CD8 a mouse mAb(YM4815 Immunoway) cyan, CD20 mouse mAb(YM4814 Immunoway) yellow, The section was incubated in 5 rounds of staining; sequentially for Anti-antibodies; each using a separate fluorescent tyramide signal amplification system. EDTA based antigen retrieval (Immunoway YS0004, pH 9.0, 20 minutes) was used in between rounds of tyramide signal amplification to remove the antibody from the previous round, to avoid any cross-reactivity. DAPI (dark blue) was used as a nuclear counter stain. Microscopy and pseudocoloring of individual dyes was performed using a Slideviewer Imaging System (Excilone).

## Contact information

Orders: [order@immunoway.com](mailto:order@immunoway.com)  
 Support: [tech@immunoway.com](mailto:tech@immunoway.com)  
 Telephone: 877-594-3616 (Toll Free), 408-747-0185  
 Website: <http://www.immunoway.com>  
 Address: 2200 Ringwood Ave San Jose, CA 95131 USA



Please scan the QR code to access additional product information:  
**Iba 1 (PTR1347)**  
**Mouse mAb**