

Prostein (PTR1345) Mouse mAb

CatalogNo: YM4763

Key Features

Host Species

- Mouse

Reactivity

- Human,

Applications

- IHC,IF,ELISA

MW

- 59kD (Calculated)
- 59kD (Observed)

Isotype

- IgG2b,Kappa

Recommended Dilution Ratios

IHC 1:200-1000

IF 1:100-500

ELISA 1:1000-5000

Storage

Storage* -15°C to -25°C/1 year(Do not lower than -25°C)

Formulation PBS, 50% glycerol, 0.05% Proclin 300, 0.05%BSA

Basic Information

Clonality Monoclonal

Clone Number PTR1345

Immunogen Information

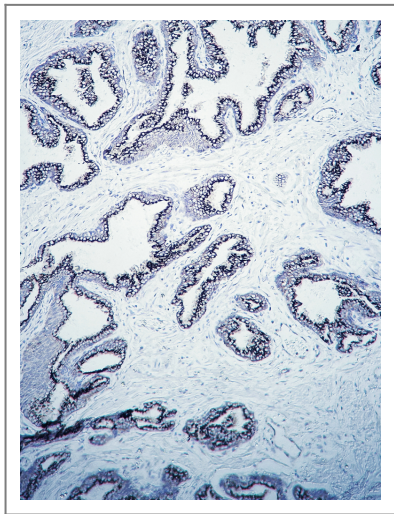
Immunogen Synthesized peptide derived from human Prostein AA range: 400-500

Specificity This antibody detects endogenous levels of Prostein protein.

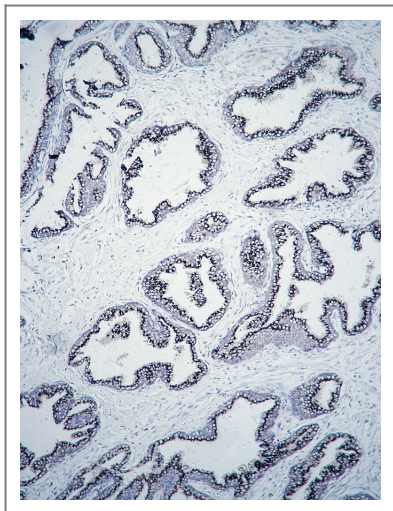
| Target Information

Gene name	SLC45A3 PCANAP6 PRST		
Protein Name	Solute carrier family 45 member 3 (Prostate cancer-associated protein 6) (Prostein)		
	Organism	Gene ID	UniProt ID
	Human	85414 ;	Q96JT2 ;
	Mouse	212980 ;	Q8K0H7 ;
Cellular Localization	Membranous		
Tissue specificity	Prostate specific. Expressed in all prostatic glandular cells. Expressed both in normal and cancerous prostates.		
Function	Proton-associated sucrose transporter. May be able to transport also glucose and fructose.		

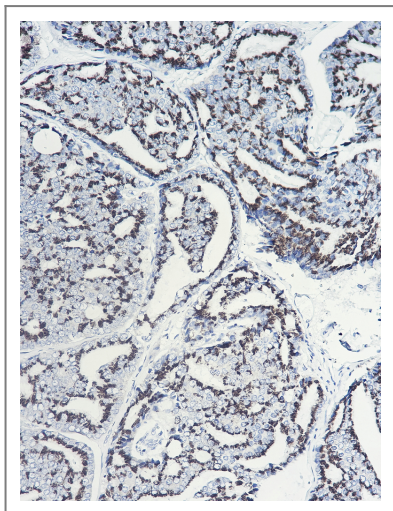
| Validation Data



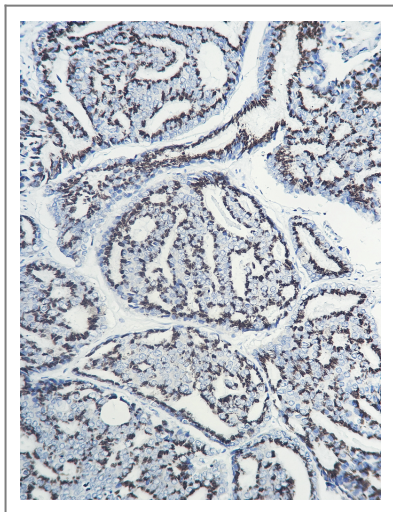
Human prostate tissue was stained with Anti-Prostein (PTR1345) Antibody



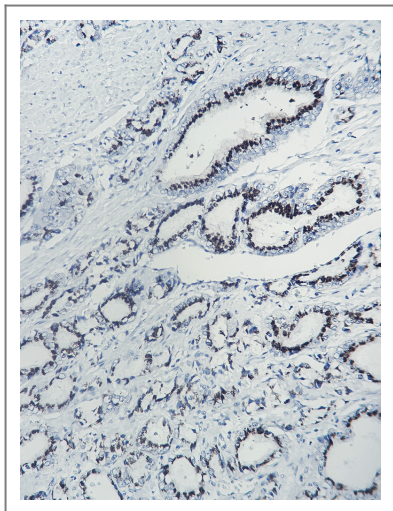
Human prostate tissue was stained with Anti-Prostein (PTR1345) Antibody



Human prostatic carcinoma tissue was stained with Anti-Prostein (PTR1345) Antibody



Human prostatic carcinoma tissue was stained with Anti-Prostein (PTR1345) Antibody



Human prostatic carcinoma tissue was stained with Anti-Prostein (PTR1345) Antibody

| Contact information

Orders: order@immunoway.com
Support: tech@immunoway.com
Telephone: 877-594-3616 (Toll Free), 408-747-0185
Website: <http://www.immunoway.com>
Address: 2200 Ringwood Ave San Jose, CA 95131 USA



Please scan the QR code to access additional product information:
Prostein (PTR1345)
Mouse mAb

For Research Use Only. Not for Use in Diagnostic Procedures.

[Antibody](#) | [ELISA Kits](#) | [Protein](#) | [Reagents](#)