

## Cdc2 (PTR1334) Mouse mAb

CatalogNo: YM4748 **Recombinant** 

### Key Features

#### Host Species

- Mouse

#### Reactivity

- Human, Mouse, Rat, Monkey

#### Applications

- WB, IF, ELISA

#### MW

- 34kD (Calculated)
- 34kD (Observed)

#### Isotype

- IgG

### Storage

**Storage\*** -15°C to -25°C/1 year (Do not lower than -25°C)**Formulation** PBS, 50% glycerol, 0.05% Proclin 300, 0.05% BSA

### Recommended Dilution Ratios

**WB 1:500-2000****IF 1:100-500****ELISA 1:1000-5000**

### Basic Information

**Clonality** Monoclonal**Clone Number** PTR1334

### Immunogen Information

**Immunogen** Synthesized peptide derived from human CDC2 expressed in E. Coli. AA range:1-100**Specificity** This antibody detects endogenous levels of Cdc2.

## Target Information

**Gene name** CDK1

**Protein Name** Cell division protein kinase 1

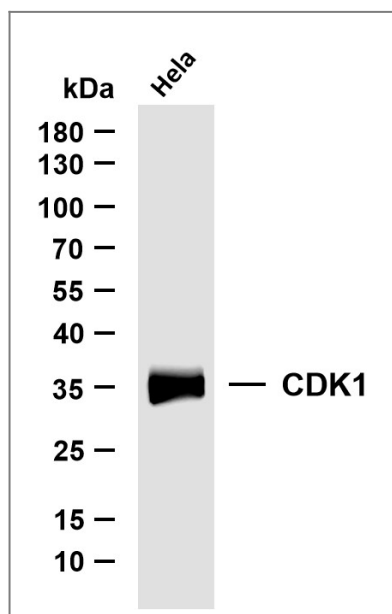
Organism	Gene ID	UniProt ID
Human	<a href="#">983</a> ;	<a href="#">P06493</a> ;
Mouse		<a href="#">P11440</a> ;
Rat		<a href="#">P39951</a> ;

**Cellular Localization** Cytoplasmic, Nuclear

**Tissue specificity** Isoform 2 is found in breast cancer tissues.

**Function** Catalytic activity:ATP + [DNA-directed RNA polymerase] = ADP + [DNA-directed RNA polymerase] phosphate.,Catalytic activity:ATP + a protein = ADP + a phosphoprotein.,enzyme regulation:Phosphorylation at Thr-14 or Tyr-15 inactivates the enzyme, while phosphorylation at Thr-161 activates it.,Function:Plays a key role in the control of the eukaryotic cell cycle. It is required in higher cells for entry into S-phase and mitosis. p34 is a component of the kinase complex that phosphorylates the repetitive C-terminus of RNA polymerase II.,similarity:Belongs to the protein kinase superfamily.,similarity:Belongs to the protein kinase superfamily. CMGC Ser/Thr protein kinase family. CDC2/CDKX subfamily.,similarity:Contains 1 protein kinase domain.,subunit:Forms a stable but non-covalent complex with a regulatory subunit and with a cyclin. Interacts with DLGAP5. Isoform 2 is unable to complex with cyclin B1 and also fails to bind to the CDK inhibitor p21. Interacts with catalytically active CCNB1 and RALBP1 during mitosis to form an endocytotic complex during interphase.,

## Validation Data



Whole cell lysates were separated by 10% SDS-PAGE, and the membrane was blotted with anti-CDK1 (PTR1334) antibody. The HRP-conjugated Goat anti-Mouse IgG(H + L) antibody was used to detect the antibody. Lane 1: HeLa

## | Contact information

Orders: order@immunoway.com  
Support: tech@immunoway.com  
Telephone: 877-594-3616 (Toll Free), 408-747-0185  
Website: <http://www.immunoway.com>  
Address: 2200 Ringwood Ave San Jose, CA 95131 USA



Please scan the QR code  
to access additional  
product information:  
**Cdc2 (PTR1334)**  
**Mouse mAb**

---

For Research Use Only. Not for Use in Diagnostic Procedures.

[Antibody](#) | [ELISA Kits](#) | [Protein](#) | [Reagents](#)