

CD3 (ABT295) Mouse mAb

CatalogNo: YM4628 **Recombinant** 

Key Features

Host Species

- Mouse

Reactivity

- Human

Applications

- IHC,WB,IF,ELISA

MW

- 23kD (Calculated)
- 23kD (Observed)

Isotype

- IgG2a,Kappa

Storage

Storage* -15°C to -25°C/1 year(Do not lower than -25°C)**Formulation** PBS, 50% glycerol, 0.05% Proclin 300, 0.05%BSA

Recommended Dilution Ratios

IHC 1:200-1000**WB 1:500-2000****IF 1:100-500****ELISA 1:1000-5000**

Basic Information

Clonality Monoclonal**Clone Number** ABT295

Immunogen Information

Immunogen Synthesized peptide derived from human CD3, CD3E AA range: 1-100**Specificity** The antibody can specifically recognize human CD3e protein, and shows no reaction with CD3d or CD3g. In western blotting of Jurkat cell lysate, the antibody can label a 23 kDa band corresponding to CD3e.

| Target Information

Gene name CD3E T3E

Protein Name CD3, CD3E

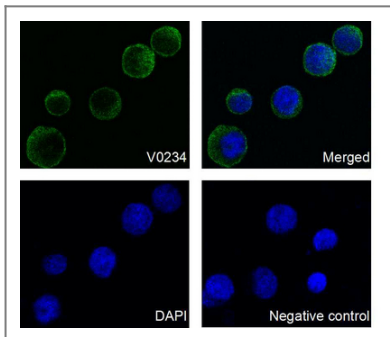
Organism	Gene ID	UniProt ID
Human	916 ;	P07766 ;

Cellular Localization Membranous

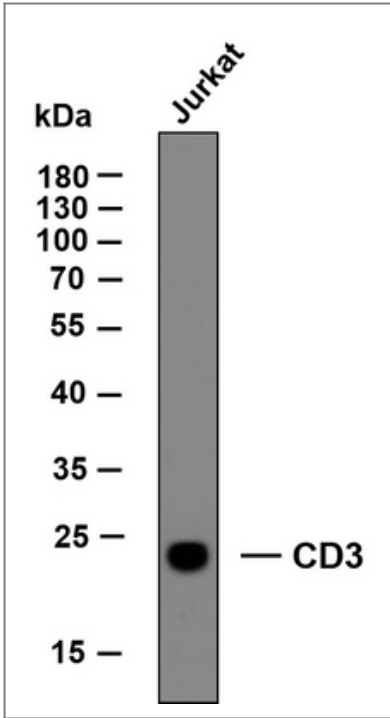
Tissue specificity Membranous

Function Function:The CD3 complex mediates signal transduction.,online information:CD3E mutation db,similarity:Contains 1 Ig-like (immunoglobulin-like) domain.,similarity:Contains 1 ITAM domain.,subunit:The TCR/CD3 complex of T-lymphocytes consists of either a TCR alpha/beta or TCR gamma/delta heterodimer coexpressed at the cell surface with the invariant subunits of CD3 labeled gamma, delta, epsilon, zeta, and eta.,

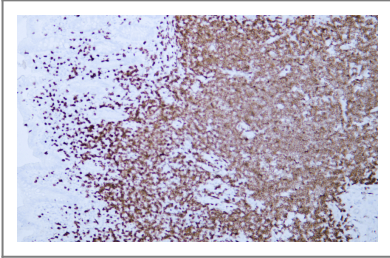
| Validation Data



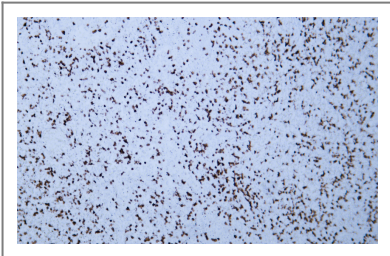
Confocal immunofluorescent analysis of Jurkat cells labeling CD3 (ABT295) mouse mAb followed by Goat Anti-mouse IgG H&L (FITC Conjugate) secondary antibody (green). Counterstained with DAPI (blue). Negative control: PBS was used to instead of primary antibody, followed by Goat Anti-mouse IgG H&L (FITC Conjugate) secondary antibody (green).



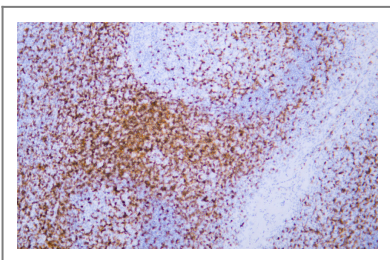
Whole cell lysates of Jurkat were separated by 12% SDS-PAGE, and the membrane was blotted with anti-CD3 antibody. The HRP-conjugated anti-Mouse IgG antibody was used to detect the antibody.



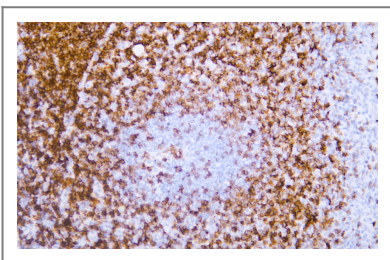
Human appendix tissue was stained with Anti-CD3 (ABT295) Antibody



Human spleen tissue was stained with Anti-CD3 (ABT295) Antibody



Human tonsil tissue was stained with Anti-CD3 (ABT295) Antibody



Human tonsil tissue was stained with Anti-CD3 (ABT295) Antibody

| Contact information

Orders: order@immunoway.com
Support: tech@immunoway.com
Telephone: 877-594-3616 (Toll Free), 408-747-0185
Website: <http://www.immunoway.com>
Address: 2200 Ringwood Ave San Jose, CA 95131 USA



Please scan the QR code
to access additional
product information:
CD3 (ABT295)
Mouse mAb

For Research Use Only. Not for Use in Diagnostic Procedures.

[Antibody](#) | [ELISA Kits](#) | [Protein](#) | [Reagents](#)