

## GLUT-1 (PTR2138) Mouse mAb

CatalogNo: YM4463

### Key Features

#### Host Species

- Mouse

#### Reactivity

- Human, Mouse, Rat,

#### Applications

- WB, IF, ELISA

#### MW

- 54kD (Calculated)
- 54kD (Observed)

#### Isotype

- IgG

### Recommended Dilution Ratios

**WB 1:500-2000**

**IF 1:100-500**

**ELISA 1:1000-5000**

### Storage

**Storage\*** -15°C to -25°C/1 year(Do not lower than -25°C)

**Formulation** PBS, 50% glycerol, 0.05% Proclin 300, 0.05%BSA

### Basic Information

**Clonality** Monoclonal

**Clone Number** PTR2138

### Immunogen Information

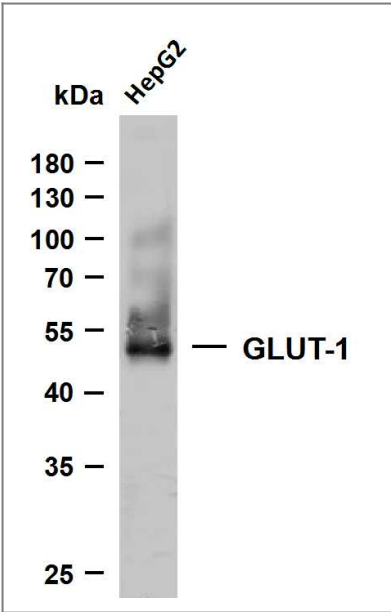
**Immunogen** Synthesized peptide derived from human GLUT-1 AA range: 400-492

**Specificity** This antibody detects endogenous levels of GLUT-1 protein.

## Target Information

Gene name	SLC2A1 GLUT1		
Protein Name	Solute carrier family 2, facilitated glucose transporter member 1 (Glucose transporter type 1, erythrocyte/brain) (GLUT-1) (HepG2 glucose transporter)		
	Organism	Gene ID	UniProt ID
	Human	<a href="#">6513</a> ;	<a href="#">P11166</a> ;
	Mouse	<a href="#">20525</a> ;	<a href="#">P17809</a> ;
Cellular Localization	Membranous		
Tissue specificity	Detected in erythrocytes (at protein level). Expressed at variable levels in many human tissues.		
Function	Facilitative glucose transporter, which is responsible for constitutive or basal glucose uptake . Has a very broad substrate specificity; can transport a wide range of aldoses including both pentoses and hexoses . Most important energy carrier of the brain: present at the blood-brain barrier and assures the energy-independent, facilitative transport of glucose into the brain . In association with BSG and NXNL1, promotes retinal cone survival by increasing glucose uptake into photoreceptors (By similarity).		

## Validation Data



Whole cell lysates were separated by 10% SDS-PAGE, and the membrane was blotted with anti-GLUT-1 (PTR2138) antibody. The HRP-conjugated Goat anti-Mouse IgG(H + L) antibody was used to detect the antibody. Lane 1: HepG2

## Contact information

Orders: order@immunoway.com  
Support: tech@immunoway.com  
Telephone: 877-594-3616 (Toll Free), 408-747-0185  
Website: http://www.immunoway.com  
Address: 2200 Ringwood Ave San Jose, CA 95131 USA



Please scan the QR code  
to access additional  
product information:  
**GLUT-1 (PTR2138)**  
**Mouse mAb**

---

For Research Use Only. Not for Use in Diagnostic Procedures.

[Antibody](#) | [ELISA Kits](#) | [Protein](#) | [Reagents](#)