

CD138 (PTR1452) Mouse mAb

CatalogNo: YM4408 **Recombinant** 

Key Features

Host Species

- Mouse

Reactivity

- Human

Applications

- IHC,IF

Isotype

- Mouse IgG1/Kappa

Storage

Storage* -15°C to -25°C/1 year(Do not lower than -25°C)**Formulation** PBS, 50% glycerol, 0.05% Proclin 300, 0.05%BSA

Recommended Dilution Ratios

IHC 1:50-200**IF 1:200-1:1000**

Basic Information

Clonality Monoclonal**Clone Number** PTR1452

Immunogen Information

Specificity Endogenous

Target Information

Gene name SDC1 SDC

Protein Name Syndecan-1 (SYND1) (CD antigen CD138)

Organism

Human

Gene ID

[6382](#);

UniProt ID

[P18827](#);

Cellular Localization

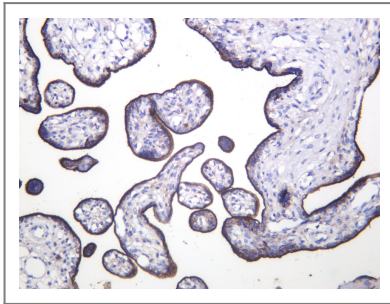
Membrane ; Single-pass type I membrane protein . Secreted . Secreted, extracellular exosome . Shedding of the ectodomain produces a soluble form. .

Tissue specificity Dermoid cancer,Fibroblast,Kidney,Mammary gland,Placenta

Function

Cell surface proteoglycan that bears both heparan sulfate and chondroitin sulfate and that links the cytoskeleton to the interstitial matrix.,similarity:Belongs to the syndecan proteoglycan family.,subunit:Interacts with CDCP1.,

Validation Data



Human placenta was stained with anti-CD138 (PTR1452) Mouse antibody

Contact information

Orders: order@immunoway.com
Support: tech@immunoway.com
Telephone: 877-594-3616 (Toll Free), 408-747-0185
Website: <http://www.immunoway.com>
Address: 2200 Ringwood Ave San Jose, CA 95131 USA



Please scan the QR code to access additional product information:
CD138 (PTR1452)
Mouse mAb

For Research Use Only. Not for Use in Diagnostic Procedures.

[Antibody](#) | [ELISA Kits](#) | [Protein](#) | [Reagents](#)