

CREBBP (PT0619) Mouse mAb

CatalogNo: YM4167

Key Features

Host Species

- Mouse

Reactivity

- Human,

Applications

- WB,IF,ELISA

MW

- 266kD (Calculated)
266kD (Observed)

Isotype

- IgG2b,Kappa

Recommended Dilution Ratios

WB 1:500-2000

IF 1:100-500

ELISA 1:1000-5000

Storage

Storage* -15°C to -25°C/1 year(Do not lower than -25°C)

Formulation PBS, 50% glycerol, 0.05% Proclin 300, 0.05%BSA

Basic Information

Clonality Monoclonal

Clone Number PT0619

Immunogen Information

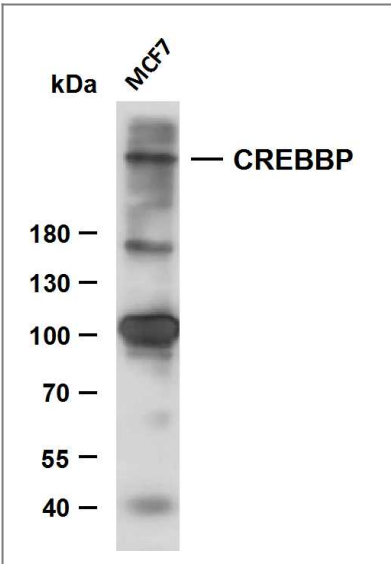
Immunogen Synthesized peptide derived from human CREBBP AA range: 900-1000

Specificity This antibody detects endogenous levels of CREBBP protein.

Target Information

Gene name	CREBBP CBP		
Protein Name	CREB-binding protein (EC 2.3.1.48)		
	Organism	Gene ID	UniProt ID
	Human	1387 ;	Q92793 ;
Cellular Localization	Cytoplasmic, Nuclear		
Function	Acetylates histones, giving a specific tag for transcriptional activation . Also acetylates non-histone proteins, like DDX21, FBL, IRF2, MAFG, NCOA3, POLR1E/PAF53 and FOXO1 . Binds specifically to phosphorylated CREB and enhances its transcriptional activity toward cAMP-responsive genes. Acts as a coactivator of ALX1. Acts as a circadian transcriptional coactivator which enhances the activity of the circadian transcriptional activators: NPAS2-ARNTL/BMAL1 and CLOCK-ARNTL/BMAL1 heterodimers . Acetylates PCNA; acetylation promotes removal of chromatin-bound PCNA and its degradation during nucleotide excision repair (NER) . Acetylates POLR1E/PAF53, leading to decreased association of RNA polymerase I with the rDNA promoter region and coding region . Acetylates DDX21, thereby inhibiting DDX21 helicase activity . Acetylates FBL, preventing methylation of 'Gln-105' of histone H2A (H2AQ104me) . Functions as a transcriptional coactivator for SMAD4 in the TGF-beta signaling pathway .		

Validation Data



Whole cell lysates were separated by 6% SDS-PAGE, and the membrane was blotted with anti-CREBBP (PT0619) antibody. The HRP-conjugated Goat anti-Mouse IgG(H + L) antibody was used to detect the antibody. Lane 1: MCF7

Contact information

Orders: order@immunoway.com
Support: tech@immunoway.com
Telephone: 877-594-3616 (Toll Free), 408-747-0185
Website: <http://www.immunoway.com>
Address: 2200 Ringwood Ave San Jose, CA 95131 USA



Please scan the QR code
to access additional
product information:
CREBBP (PT0619)
Mouse mAb

For Research Use Only. Not for Use in Diagnostic Procedures.

[Antibody](#) | [ELISA Kits](#) | [Protein](#) | [Reagents](#)