

Beclin-1 (5C2) Mouse mAb

CatalogNo: YM3655 **Orthogonal Validated** 

Key Features

Host Species

- Mouse

Reactivity

- Human, Mouse, Rat, Bovine

Applications

- WB, IHC, IF

MW

- 60kD (Observed)

Storage

Storage* -15°C to -25°C/1 year (Do not lower than -25°C)**Formulation** Liquid in PBS containing 50% glycerol, 0.5% BSA and 0.02% sodium azide.

Recommended Dilution Ratios

WB 1:1000-2000**IHC 1:100-200****IF 1:50-200**

Basic Information

Clonality Monoclonal**Clone Number** 5C2

Immunogen Information

Immunogen Synthetic Peptide of Beclin-1 at AA range of 110-190**Specificity** Beclin-1 protein detects endogenous levels of BECN1

Target Information

Gene name BECN1

Protein Name BECN1

Organism	Gene ID	UniProt ID
Human	8678 ;	Q14457 ;
Mouse		O88597 ;
Rat		Q91XJ1 ;

Cellular Localization

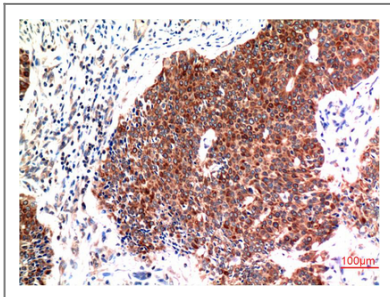
Cytoplasm . Golgi apparatus, trans-Golgi network membrane ; Peripheral membrane protein . Endosome membrane ; Peripheral membrane protein . Endoplasmic reticulum membrane ; Peripheral membrane protein . Mitochondrion membrane ; Peripheral membrane protein . Endosome . Cytoplasmic vesicle, autophagosome . Interaction with ATG14 promotes translocation to autophagosomes. Expressed in dendrites and cell bodies of cerebellar Purkinje cells (By similarity). .; [Beclin-1-C 35 kDa]: Mitochondrion . Nucleus . Cytoplasm .; [Beclin-1-C 37 kDa]: Mitochondrion .

Tissue specificity Ubiquitous.

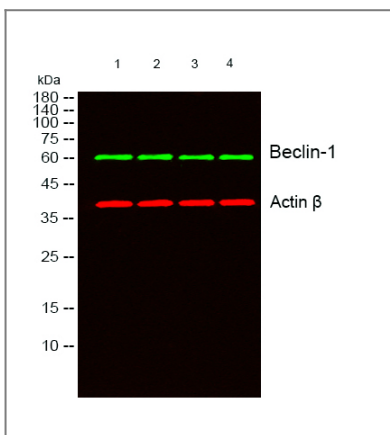
Function

Function:Plays a central role in autophagy (By similarity). May play a role in antiviral host defense. Protects against infection by a neurovirulent strain of Sindbis virus.,similarity:Belongs to the beclin family.,subcellular location:Expressed in dendrites and cell bodies of cerebellar Purkinje cells.,subunit:Interacts with GOPC and GRID2. Interacts with AMBRA1. Probably forms a complex with AMBRA1 and PIK3C3 (By similarity). Interacts with BCL2 and BCL2L1.,tissue specificity:Ubiquitous.,

Validation Data



Immunohistochemical analysis of paraffin-embedded Human Breast Carcinoma Tissue using Beclin-1 Mouse mAb diluted at 1:200.



Western blot analysis of lysates from 1) 293T Cell Lysate, 2) C2C12 Cell Lysate, 3) Rat Brain Tissue cells, (Green) primary antibody was diluted at 1:1000, 4° over night, secondary antibody(cat:RS23910)was diluted at 1:10000, 37° 1hour. (Red) Actin β Polyclonal Antibody (cat:YT0099) antibody was diluted at 1:5000 as loading control, 4° over night,secondary antibody(cat:RS23720)was diluted at 1:10000, 37° 1hour.

| Contact information

Orders: order@immunoway.com
Support: tech@immunoway.com
Telephone: 877-594-3616 (Toll Free), 408-747-0185
Website: <http://www.immunoway.com>
Address: 2200 Ringwood Ave San Jose, CA 95131 USA



Please scan the QR code
to access additional
product information:
Beclin-1 (5C2)
Mouse mAb

For Research Use Only. Not for Use in Diagnostic Procedures.

[Antibody](#) | [ELISA Kits](#) | [Protein](#) | [Reagents](#)