

CD25 (Q22) Mouse mAb

CatalogNo: YM3107

Key Features

Host Species

- Mouse

Reactivity

- Human

Applications

- IHC,IF

MW

- 31kD (Calculated)

Recommended Dilution Ratios

IHC 1:200

IF 1:50-200

Storage

Storage* -15°C to -25°C/1 year(Do not lower than -25°C)

Formulation PBS, pH 7.4, containing 0.5%BSA, 0.02% sodium azide as Preservative and 50% Glycerol.

Basic Information

Clonality Monoclonal

Clone Number Q22

Immunogen Information

Immunogen Synthetic Peptide of CD25

Specificity The antibody detects endogenous human CD25 protein.

Target Information

Gene name IL2RA

Protein Name Interleukin-2 receptor subunit alpha

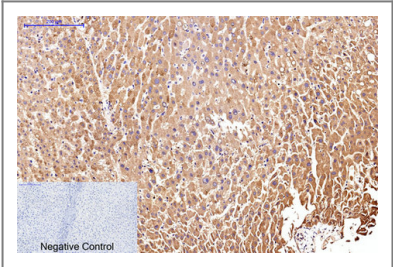
Organism	Gene ID	UniProt ID
Human	3559;	P01589;
Mouse	16184;	P01590;
Rat	25704;	P26897;

Cellular Localization Membrane; Single-pass type I membrane protein.

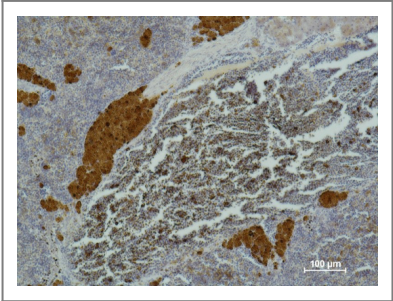
Tissue specificity Thymus,

Function Disease:Genetic variations in IL2RA are associated with susceptibility to insulin-dependent diabetes mellitus type 10 (IDDM10) [MIM:601942].,Function:Receptor for interleukin-2.,online information:IL2RA mutation db,similarity:Contains 2 Sushi (CCP/SCR) domains.,subunit:Non-covalent dimer of an alpha and a beta chains. IL2R exists in 3 different forms: a high affinity dimer, an intermediate affinity monomer (beta chain), and a low affinity monomer (alpha chain). The high and intermediate affinity forms also associate with a gamma chain.,

Validation Data



Immunohistochemical analysis of paraffin-embedded Human-liver tissue. 1,CD25 Monoclonal Antibody(Q22) was diluted at 1:200(4°C,overnight). 2, Sodium citrate pH 6.0 was used for antibody retrieval(>98°C,20min). 3,Secondary antibody was diluted at 1:200(room tempeRature, 30min). Negative control was used by secondary antibody only.



Immunohistochemical analysis of paraffin-embedded Mouse SpleenTissue using CD 25 Mouse mAb diluted at 1:500.

Contact information

Orders: order@immunoway.com
Support: tech@immunoway.com
Telephone: 877-594-3616 (Toll Free), 408-747-0185
Website: <http://www.immunoway.com>
Address: 2200 Ringwood Ave San Jose, CA 95131 USA



Please scan the QR code
to access additional
product information:
**CD25 (Q22) Mouse
mAb**

For Research Use Only. Not for Use in Diagnostic Procedures.

[Antibody](#) | [ELISA Kits](#) | [Protein](#) | [Reagents](#)