

IDE (3H4) Mouse mAb

CatalogNo: YM3083

Orthogonal Validated 

Key Features

Host Species

- Mouse

Reactivity

- Human, Hamster

Applications

- WB, IHC, IF,

MW

- 118kD (Observed)

Storage

Storage*

-15°C to -25°C/1 year (Do not lower than -25°C)

Formulation

PBS, pH 7.4, containing 0.5% BSA, 0.02% sodium azide as Preservative and 50% Glycerol.

Recommended Dilution Ratios

WB 1:1000

IF 1:200

IHC 1:50-300

Basic Information

Clonality

Monoclonal

Clone Number

3H4

Immunogen Information

Immunogen

Synthetic Peptide of IDE

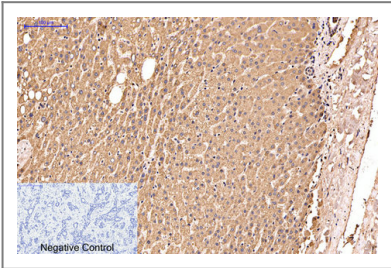
Specificity

The antibody detects endogenous IDE proteins.

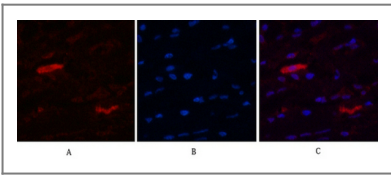
Target Information

Gene name	IDE		
Protein Name	Insulin-degrading enzyme		
	Organism	Gene ID	UniProt ID
	Human	3416 ;	P14735 ;
	Mouse		Q9JHR7 ;
	Rat	25700 ;	P35559 ;
Cellular Localization	Cytoplasm, cytosol . Cell membrane . Secreted . Present at the cell surface of neuron cells. The membrane-associated isoform is approximately 5 kDa larger than the known cytosolic isoform.		
Tissue specificity	Detected in brain and in cerebrospinal fluid (at protein level).		
Function	Catalytic activity:Degradation of insulin, glucagon and other polypeptides. No action on proteins.,cofactor:Binds 1 zinc ion per subunit.,Function:May play a role in the cellular processing of insulin. May be involved in intercellular peptide signaling.,PTM:The N-terminus is blocked.,similarity:Belongs to the peptidase M16 family.,subunit:Homodimer.,		

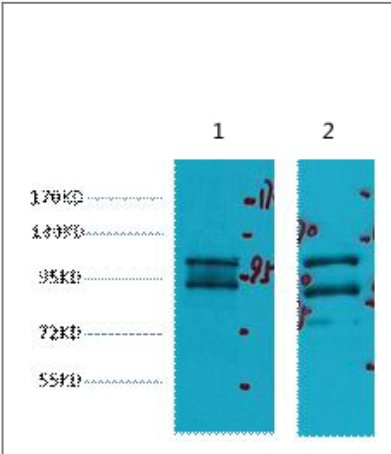
Validation Data



Immunohistochemical analysis of paraffin-embedded Human-liver-cancer tissue. 1,IDE Monoclonal Antibody(3H4) was diluted at 1:200(4°C,overnight). 2, Sodium citrate pH 6.0 was used for antibody retrieval(>98°C,20min). 3,Secondary antibody was diluted at 1:200(room tempeRature, 30min). Negative control was used by secondary antibody only.



Immunofluorescence analysis of Human-breast tissue. 1,IDE Monoclonal Antibody(3H4)(red) was diluted at 1:200(4°C,overnight). 2, Cy3 labeled Secondary antibody was diluted at 1:300(room temperature, 50min).3, Picture B: DAPI(blue) 10min. Picture A:Target. Picture B: DAPI. Picture C: merge of A+B



Western blot analysis of 1) Hela, 2) HepG2, diluted at 1:2000

| Contact information

Orders: order@immunoway.com
Support: tech@immunoway.com
Telephone: 877-594-3616 (Toll Free), 408-747-0185
Website: <http://www.immunoway.com>
Address: 2200 Ringwood Ave San Jose, CA 95131 USA



Please scan the QR code
to access additional
product information:
**IDE (3H4) Mouse
mAb**

For Research Use Only. Not for Use in Diagnostic Procedures.

[Antibody](#) | [ELISA Kits](#) | [Protein](#) | [Reagents](#)