

ERCC1 (1B10) Mouse mAb

CatalogNo: YM3078

Key Features

Host Species

- Mouse

Reactivity

- Human

Applications

- WB,IHC,IF,

MW

- 36kD (Observed)

Storage

Storage* -15°C to -25°C/1 year(Do not lower than -25°C)

Formulation PBS, pH 7.4, containing 0.5%BSA, 0.02% sodium azide as Preservative and 50% Glycerol.

Recommended Dilution Ratios

IHC: 100-300

WB 1:1000

IF 1:50-200

Basic Information

Clonality Monoclonal

Clone Number 1B10

Immunogen Information

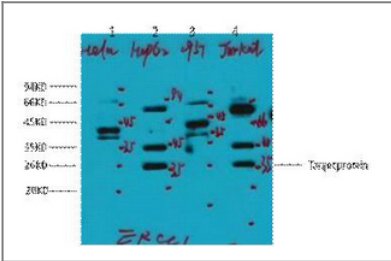
Immunogen Synthetic Peptide of ERCC1

Specificity The antibody detects endogenous ERCC1 proteins.

Target Information

Gene name	ERCC1		
Protein Name	DNA excision repair protein ERCC-1		
	Organism	Gene ID	UniProt ID
	Human	2067 ;	P07992 ;
	Mouse	13870 ;	P07903 ;
Cellular Localization	[Isoform 1]: Nucleus .; [Isoform 2]: Cytoplasm . Nucleus .; [Isoform 3]: Nucleus .; [Isoform 4]: Nucleus .		
Tissue specificity	Cerebellum,Lung,Ovarian cancer,Uterus,		
Function	Disease:Defects in ERCC1 are the cause of cerebro-oculo-facio-skeletal syndrome type 4 (COFS4) [MIM:610758]. COFS is a degenerative autosomal recessive disorder of prenatal onset affecting the brain, eye and spinal cord. After birth, it leads to brain atrophy, hypoplasia of the corpus callosum, hypotonia, cataracts, microcornea, optic atrophy, progressive joint contractures and growth failure. Facial dysmorphism is a constant feature. Abnormalities of the skull, eyes, limbs, heart and kidney also occur.,Function:Structure-specific DNA repair endonuclease responsible for the 5'-incision during DNA repair.,similarity:Belongs to the ERCC1/RAD10/SWI10 family.,subunit:Heterodimer composed of ERCC1 and XPF/ERRC4.,		

Validation Data



Western blot analysis of 1) HeLa, 2) HepG2, 3) 293T, 4) Jurkat, diluted at 1:2000. cells nucleus extracted by Minute TM Cytoplasmic and Nuclear Fractionation kit (SC-003,Inventbiotech,MN,USA).



Immunohistochemical analysis of paraffin-embedded human tonsil. 1, Tris-EDTA,pH9.0 was used for antigen retrieval. 2 Antibody was diluted at 1:200(4° overnight.3,Secondary antibody was diluted at 1:200(room temperature, 45min).

Contact information

Orders: order@immunoway.com
Support: tech@immunoway.com
Telephone: 877-594-3616 (Toll Free), 408-747-0185
Website: http://www.immunoway.com
Address: 2200 Ringwood Ave San Jose, CA 95131 USA



Please scan the QR code
to access additional
product information:
ERCC1 (1B10)
Mouse mAb

For Research Use Only. Not for Use in Diagnostic Procedures.

[Antibody](#) | [ELISA Kits](#) | [Protein](#) | [Reagents](#)