

AFP alpha 1 Fetoprotein (17C5) Mouse mAb

CatalogNo: YM3075

Key Features

Host Species

- Mouse

Reactivity

- Human

Applications

- WB,IHC,IF,

MW

- 70kD (Observed)

Storage

Storage* -15°C to -25°C/1 year(Do not lower than -25°C)

Formulation PBS, pH 7.4, containing 0.5%BSA, 0.02% sodium azide as Preservative and 50% Glycerol.

Recommended Dilution Ratios

WB 1:2000

IF 1:200

IHC 1:50-300

Basic Information

Clonality Monoclonal

Clone Number 17C5

Immunogen Information

Immunogen Synthetic Peptide of AFP alpha 1 Fetoprotein

Specificity The antibody detects endogenous AFP proteins.

Target Information

Gene name AFP
Protein Name Alpha-1-Fetoprotein(AFP)

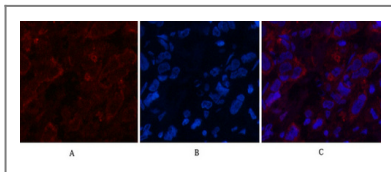
Organism	Gene ID	UniProt ID
Human	174;	P02771;
Mouse	11576;	P02772;
Rat		P02773;

Cellular Localization Secreted.

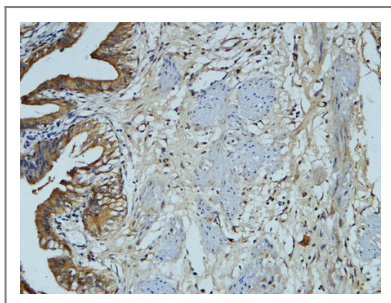
Tissue specificity Plasma. Synthesized by the fetal liver and yolk sac.

Function developmental stage:Occurs in the plasma of fetuses more than 4 weeks old, reaches the highest levels during the 12th-16th week of gestation, and drops to trace amounts after birth. The serum level in adults is usually less than 40 ng/ml. AFP occurs also at high levels in the plasma and ascitic fluid of adults with hepatoma.,Function:Binds copper, nickel, and fatty acids as well as, and bilirubin less well than, serum albumin. Only a small percentage (less than 2%) of the human AFP shows estrogen-binding properties.,online information:Alpha-fetoprotein entry,PTM:Independent studies suggest heterogeneity of the N-terminal sequence of the mature protein and of the cleavage site of the signal sequence.,PTM:Sulfated.,similarity:Belongs to the ALB/AFP/VDB family.,similarity:Contains 3 albumin domains.,subunit:Dimeric and trimeric forms have been found in addition to the monomeric form.,tissue specificity:Plasma. Synthesized by the fetal liver and yolk sac.,

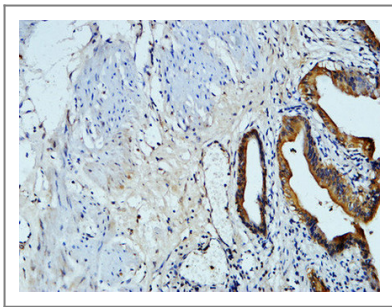
Validation Data



Immunofluorescence analysis of Human-breast-cancer tissue. 1,AFP alpha 1 Fetoprotein Monoclonal Antibody(17C5)(red) was diluted at 1:200(4°C,overnight). 2, Cy3 labeled Secondary antibody was diluted at 1:300(room temperature, 50min).3, Picture B: DAPI(blue) 10min. Picture A:Target. Picture B: DAPI. Picture C: merge of A+B



Immunohistochemical analysis of paraffin-embedded Human gallbladder. 1, Antibody was diluted at 1:100(4° overnight). 2, High-pressure and temperature EDTA, pH8.0 was used for antigen retrieval. 3,Secondary antibody was diluted at 1:200(room temperature, 30min).



Immunohistochemical analysis of paraffin-embedded Human gallbladder. 1, Antibody was diluted at 1:100(4° overnight). 2, High-pressure and temperature EDTA, pH8.0 was used for antigen retrieval. 3,Secondary antibody was diluted at 1:200(room temperature, 30min).

| Contact information

Orders: order@immunoway.com
Support: tech@immunoway.com
Telephone: 877-594-3616 (Toll Free), 408-747-0185
Website: <http://www.immunoway.com>
Address: 2200 Ringwood Ave San Jose, CA 95131 USA



Please scan the QR code to access additional product information:
**AFP alpha 1
Fetoprotein (17C5)
Mouse mAb**

For Research Use Only. Not for Use in Diagnostic Procedures.

[Antibody](#) | [ELISA Kits](#) | [Protein](#) | [Reagents](#)