

Myosin Heavy Chain (11C2) Mouse mAb

CatalogNo: YM3058

Key Features

Host Species

- Mouse

Reactivity

- Human, Mouse, Rat, Drosophila, Nematode

Applications

- IF

MW

- 220kD (Observed)

Storage

Storage* -15°C to -25°C/1 year (Do not lower than -25°C)

Formulation PBS, pH 7.4, containing 0.5% BSA, 0.02% sodium azide as Preservative and 50% Glycerol.

Recommended Dilution Ratios

IF 1:100

Basic Information

Clonality Monoclonal

Clone Number 11C2

Immunogen Information

Immunogen Synthetic Peptide of Myosin Heavy Chain

Specificity The antibody detects endogenous MHC proteins.

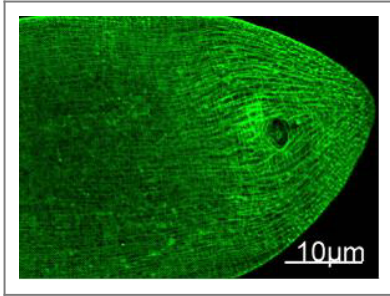
Target Information

Protein Name**OrganismGene ID****UniProt ID**

Human

[P05976](#); [P08590](#); [P10916](#); [P11055](#); [P12829](#); [P12882](#); [P13533](#); [P60660](#); [Q02045](#);

| Validation Data



Immunofluorescence Staining of nematode tissue with MYH mouse mAb (11C2) diluted at 1:100. (Provide by Tsinghua University) .

| Contact information

Orders: order@immunoway.com
Support: tech@immunoway.com
Telephone: 877-594-3616 (Toll Free), 408-747-0185
Website: <http://www.immunoway.com>
Address: 2200 Ringwood Ave San Jose, CA 95131 USA



Please scan the QR code to access additional product information:
Myosin Heavy Chain (11C2) Mouse mAb

For Research Use Only. Not for Use in Diagnostic Procedures.

[Antibody](#) | [ELISA Kits](#) | [Protein](#) | [Reagents](#)