

Ki-67 (PT0321R) PT™ Rabbit mAb (AbFluor 488)

CatalogNo: YM2221 **Recombinant** 

Key Features

Host Species

- Rabbit

Reactivity

- Human, Mouse, Rat,

Applications

- IF,

MW

- 359kD (Calculated)
- 359kD (Observed)

Isotype

- IgG, Kappa

Conjugate

- AbFluor 488

Recommended Dilution Ratios

IF 1:100-500

Storage

Storage* -15°C to -25°C/1 year (Do not lower than -25°C)

Formulation PBS, 50% glycerol, 0.05% Proclin 300, 0.05% BSA

Basic Information

Clonality Monoclonal

Clone Number PT0321R

Immunogen Information

Specificity Endogenous

Target Information

Gene name MKI67

Protein Name Ki 67

Organism

Human

Gene ID

[4288;](#)

UniProt ID

[P46013;](#)

Cellular Localization

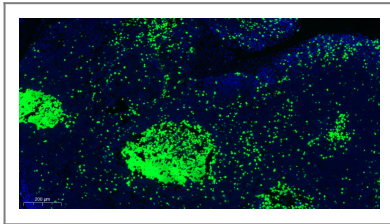
Nucleus

Tissue specificity Nuclear

Function

developmental stage:Expression of this antigen occurs preferentially during late G1, S, G2 and M phases of the cell cycle, while in cells in G0 phase the antigen cannot be detected.,Function:Thought to be required for maintaining cell proliferation.,online information:Ki-67 entry,similarity:Contains 1 FHA domain.,subcellular location:Predominantly localized in the G1 phase in the perinucleolar region, in the later phases it is also detected throughout the nuclear interior, being predominantly localized in the nuclear matrix. In mitosis, it is present on all chromosomes.,subunit:Interacts with KIF15. Binds through the FHA domain to MKI67IP.,

Validation Data



Immunofluorescence analysis of human tonsil. 1,primary Antibody was diluted at 1:100(4~C overnight).

Contact information

Orders: order@immunoway.com
Support: tech@immunoway.com
Telephone: 877-594-3616 (Toll Free), 408-747-0185
Website: <http://www.immunoway.com>
Address: 2200 Ringwood Ave San Jose, CA 95131 USA



Please scan the QR code to access additional product information:
Ki-67 (PT0321R)
PT™ Rabbit mAb
(AbFluor 488)

For Research Use Only. Not for Use in Diagnostic Procedures.

[Antibody](#) | [ELISA Kits](#) | [Protein](#) | [Reagents](#)