

β-tubulin (5G3) Mouse mAb (HRP)

CatalogNo: YM2208

Key Features

Host Species

- Mouse

Reactivity

- Human, Rat, Mouse, Mk, Dg, Ch, Hamster, Rabbit, sheep, Insect, Yeast

Applications

- WB, IF, IHC

MW

- 55kD
(Observed)

Conjugate

- HRP

Recommended Dilution Ratios

WB 1:1000-1:3000**IHC 1:50-1:200****IF 1:200**

Storage

Storage*

-15°C to -25°C/1 year(Do not lower than -25°C)

Formulation

Liquid in PBS containing 50% glycerol, 0.5% BSA and 0.02% sodium azide.

Basic Information

Clonality

Monoclonal

Clone Number

5G3

Immunogen Information

Immunogen

Recombinant Protein of β-tubulin (HRP Conjugated)

Specificity

The β-tubulin antibody can detect endogenous β-tubulin protein.

| Target Information

Gene name TUBB

Protein Name Tubulin beta chain (Tubulin beta-5 chain)

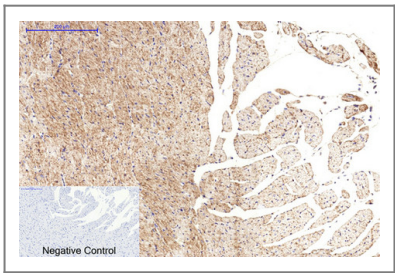
Organism	Gene ID	UniProt ID
Human	203068 ;	
Mouse		P99024 ;
Rat		P69897 ;

Cellular Localization Cytoplasm, cytoskeleton .

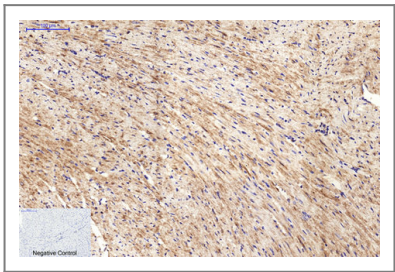
Tissue specificity Ubiquitously expressed with highest levels in spleen, thymus and immature brain.

Function Domain:The highly acidic C-terminal region may bind cations such as calcium.,Function:Tubulin is the major constituent of microtubules. It binds two moles of GTP, one at an exchangeable site on the beta chain and one at a non-exchangeable site on the alpha-chain.,online information:Tubulin entry,similarity:Belongs to the tubulin family.,subunit:Dimer of alpha and beta chains.,tissue specificity:Ubiquitously expressed with highest levels in spleen, thymus and immature brain.,

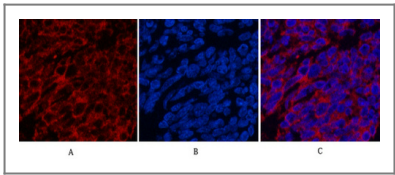
| Validation Data



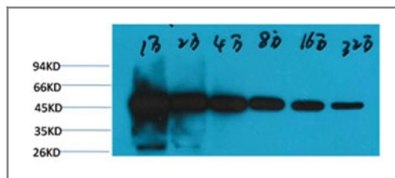
Immunohistochemical analysis of paraffin-embedded Rat-heart tissue. 1,β-tubulin (HRP Conjugated) Monoclonal Antibody(5G3) was diluted at 1:200(4°C,overnight). 2, Sodium citrate pH 6.0 was used for antibody retrieval(>98°C,20min). 3,Secondary antibody was diluted at 1:200(room temperature, 30min). Negative control was used by secondary antibody only.



Immunohistochemical analysis of paraffin-embedded Mouse-heart tissue. 1,β-tubulin (HRP Conjugated) Monoclonal Antibody(5G3) was diluted at 1:200(4°C,overnight). 2, Sodium citrate pH 6.0 was used for antibody retrieval(>98°C,20min). 3,Secondary antibody was diluted at 1:200(room temperature, 30min). Negative control was used by secondary antibody only.



Immunofluorescence analysis of Human-lung-cancer tissue. 1,β-tubulin (HRP Conjugated) Monoclonal Antibody(5G3)(red) was diluted at 1:200(4°C,overnight). 2, Cy3 labeled Secondary antibody was diluted at 1:300(room temperature, 50min).3, Picture B: DAPI(blue) 10min. Picture A:Target. Picture B: DAPI. Picture C: merge of A+B



Western blot analysis of Hela, with β -tubulin-HRP Conjugated diluted at 1:10,000, 20,000, 40,000, 80,000, 160,000, 320,000.

Contact information

Orders: order@immunoway.com
 Support: tech@immunoway.com
 Telephone: 877-594-3616 (Toll Free), 408-747-0185
 Website: <http://www.immunoway.com>
 Address: 2200 Ringwood Ave San Jose, CA 95131 USA



Please scan the QR code to access additional product information:

β -tubulin (5G3)
Mouse mAb (HRP)

For Research Use Only. Not for Use in Diagnostic Procedures.

[Antibody](#) | [ELISA Kits](#) | [Protein](#) | [Reagents](#)