

Beclin 1 Mouse mAb

CatalogNo: YM1326

Orthogonal Validated Comparable Abs Protein Overexpression 

Key Features

Host Species

- Mouse

Reactivity

- Human, Mouse, Rat, Monkey, Hamster

Applications

- WB, IP

MW

- 55kD (Observed)

Recommended Dilution Ratios

WB 1:1000

IP 1:50-200

Storage

Storage* -15°C to -25°C/1 year(Do not lower than -25°C)**Formulation** Liquid in PBS containing 50% glycerol, 0.5% BSA and 0.02% sodium azide.

Basic Information

Clonality Monoclonal**Clone Number** 13G2

Immunogen Information

Immunogen Purified recombinant human Beclin 1 protein fragments expressed in E.coli.**Specificity** This antibody detects endogenous levels of Beclin 1 and does not cross-react with related proteins.

Target Information

Gene name becn1

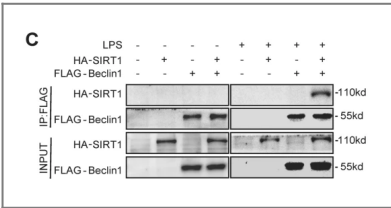
Protein Name	Organism	Gene ID	UniProt ID
	Human	8678 ;	Q14457 ;
	Mouse		O88597 ;

Cellular Localization Cytoplasm . Golgi apparatus, trans-Golgi network membrane ; Peripheral membrane protein . Endosome membrane ; Peripheral membrane protein . Endoplasmic reticulum membrane ; Peripheral membrane protein . Mitochondrion membrane ; Peripheral membrane protein . Endosome . Cytoplasmic vesicle, autophagosome . Interaction with ATG14 promotes translocation to autophagosomes. Expressed in dendrites and cell bodies of cerebellar Purkinje cells (By similarity). .; [Beclin-1-C 35 kDa]: Mitochondrion . Nucleus . Cytoplasm .; [Beclin-1-C 37 kDa]: Mitochondrion .

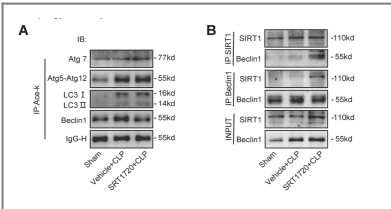
Tissue specificity Ubiquitous.

Function Function:Plays a central role in autophagy (By similarity). May play a role in antiviral host defense. Protects against infection by a neurovirulent strain of Sindbis virus.,similarity:Belongs to the beclin family.,subcellular location:Expressed in dendrites and cell bodies of cerebellar Purkinje cells.,subunit:Interacts with GOPC and GRID2. Interacts with AMBRA1. Probably forms a complex with AMBRA1 and PIK3C3 (By similarity). Interacts with BCL2 and BCL2L1.,tissue specificity:Ubiquitous.,

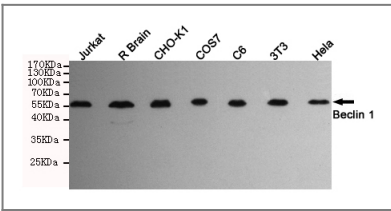
Validation Data



Deng, Z., Sun, M., Wu, J. et al. SIRT1 attenuates sepsis-induced acute kidney injury via Beclin1 deacetylation-mediated autophagy activation. Cell Death Dis 12, 217 (2021).



Deng, Z., Sun, M., Wu, J. et al. SIRT1 attenuates sepsis-induced acute kidney injury via Beclin1 deacetylation-mediated autophagy activation. Cell Death Dis 12, 217 (2021).



Western blot detection of Beclin 1 in HeLa,3T3,C6,COS7,CHO-K1,Rat brain and Jurkat cell lysates using Beclin 1 mouse mAb (1:1000 diluted).Predicted band size:52KDa.Observed band size:55KDa.

| Contact information

Orders: order@immunoway.com
Support: tech@immunoway.com
Telephone: 877-594-3616 (Toll Free), 408-747-0185
Website: <http://www.immunoway.com>
Address: 2200 Ringwood Ave San Jose, CA 95131 USA



Please scan the QR code
to access additional
product information:
Beclin 1 Mouse mAb

For Research Use Only. Not for Use in Diagnostic Procedures.

[Antibody](#) | [ELISA Kits](#) | [Protein](#) | [Reagents](#)