

PP5 Mouse mAb

CatalogNo: YM1269

| Key Features

Host Species

- Mouse

Reactivity

- Human

Applications

- WB

MW

- 57kD (Observed)

| Recommended Dilution Ratios

WB 1:1000

| Storage

Storage* -15°C to -25°C/1 year(Do not lower than -25°C)

Formulation Liquid in PBS containing 50% glycerol, 0.5% BSA and 0.02% sodium azide.

| Basic Information

Clonality Monoclonal

| Immunogen Information

Immunogen Purified recombinant human PP5 protein fragments expressed in E.coli.

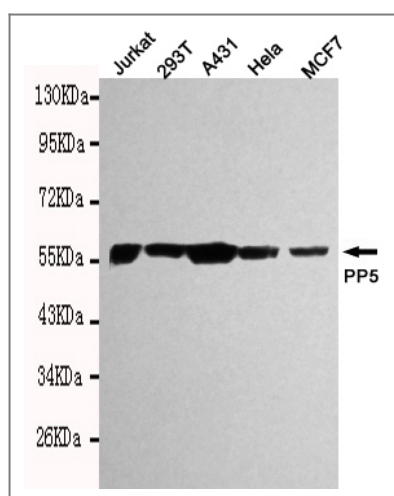
Specificity This antibody detects endogenous levels of PP5 and does not cross-react with related protein

| Target Information

Gene name ppp5c

| Protein Name | Organism | Gene ID | UniProt ID |
|------------------------------|-------------------------------------------------------------------------------------------------------------------------------------------------------------------------------------------------------------------------------------------------------------------------------------------------------------------------------------------------------------------------------------------------------------------------------------------------------------------------------------------------------------------------------------------------------------------------------------------------------------------------------------------------------|-----------------------|-------------------------|
| | Human | 5536; | P53041; |
| | Mouse | | Q60676; |
| Cellular Localization | Nucleus . Cytoplasm . Cell membrane . Predominantly nuclear (PubMed:15383005). But also present in the cytoplasm (PubMed:15383005). Translocates from the cytoplasm to the plasma membrane in a RAC1-dependent manner (PubMed:19948726). . | | |
| Tissue specificity | Ubiquitous. | | |
| Function | Catalytic activity:A phosphoprotein + H(2)O = a protein + phosphate.,cofactor:Binds 1 iron ion per subunit.,cofactor:Binds 1 manganese ion per subunit.,Function:May play a role in the regulation of RNA biogenesis and/or mitosis. In vitro, dephosphorylates serine residues of skeletal muscle phosphorylase and histone H1.,similarity:Belongs to the PPP phosphatase family.,similarity:Belongs to the PPP phosphatase family. PP-5 (PP-T) subfamily.,similarity:Contains 3 TPR repeats.,subcellular location:Predominantly nuclear. But also present in the cytoplasm.,subunit:Interacts with CDC16 and CDC27.,tissue specificity:Ubiquitous., | | |

Validation Data



Western blot detection of PP5 in HeLa, Jurkat, 293T, A431 and MCF7 cell lysates using PP5 mouse mAb (1:1000 diluted). Predicted band size: 57kDa. Observed band size: 57kDa.

Contact information

Orders: order@immunoway.com
 Support: tech@immunoway.com
 Telephone: 877-594-3616 (Toll Free), 408-747-0185
 Website: <http://www.immunoway.com>
 Address: 2200 Ringwood Ave San Jose, CA 95131 USA



Please scan the QR code to access additional product information:
PP5 Mouse mAb

