

## PAX-8 (4H15) Mouse mAb

CatalogNo: YM0509

### Key Features

#### Host Species

- Mouse

#### Reactivity

- Human

#### Applications

- WB,ELISA

#### MW

- 48kD (Calculated)

### Storage

**Storage\*** -15°C to -25°C/1 year(Do not lower than -25°C)

**Formulation** Liquid in PBS containing 50% glycerol, 0.5% BSA and 0.02% sodium azide.

### Recommended Dilution Ratios

**WB 1:500-1:2000**

**ELISA 1:10000**

**Not yet tested in other applications.**

### Basic Information

**Clonality** Monoclonal

**Clone Number** 4H15

### Immunogen Information

**Immunogen** Purified recombinant fragment of human Pax-8 expressed in E. Coli.

**Specificity** Pax-8 Monoclonal Antibody detects endogenous levels of Pax-8 protein.

### Target Information

**Gene name** PAX8

**Protein Name** Paired box protein Pax-8

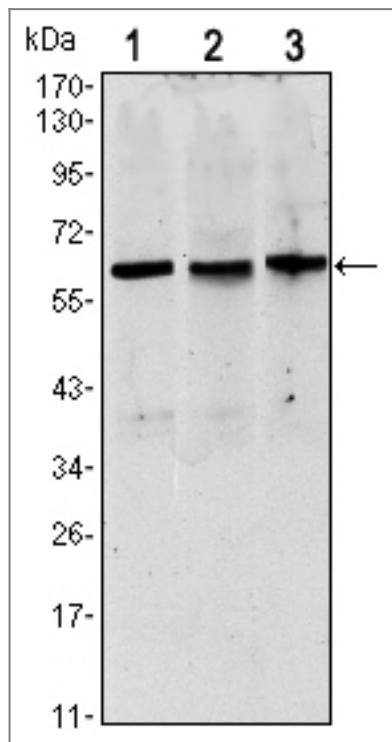
Organism	Gene ID	UniProt ID
Human	<a href="#">7846;</a>	<a href="#">Q06710;</a>
Mouse		<a href="#">Q00288;</a>

**Cellular Localization** Nucleus.

**Tissue specificity** Expressed in the excretory system, thyroid gland and Wilms tumors.

**Function** Caution:The sequence shown here is derived from an Ensembl automatic analysis pipeline and should be considered as preliminary data.,developmental stage:In developing excretory system, during thyroid differentiation and in adult thyroid.,Disease:Defects in PAX8 are the cause of congenital hypothyroidism non-goitrous type 2 (CHNG2) [MIM:218700]. CHNG2 is a disease characterized by thyroid dysgenesis, the most frequent cause of congenital hypothyroidism, accounting for 85% of case. The thyroid gland can be completely absent (athyreosis), ectopically located and/or severely hypoplastic. Ectopic thyroid gland is the most frequent malformation, with thyroid tissue being found most often at the base of the tongue.,Function:Transcription factor for the thyroid-specific expression of the genes exclusively expressed in the thyroid cell type, maintaining the functional differentiation of such cells.,similarity:Contains 1 paired domain.,tissue specificity:Expressed in the excretory system, thyroid gland and Wilms tumors.,

## Validation Data



Western Blot analysis using Pax-8 Monoclonal Antibody against HeLa (1), HEK293 (2) and Raji (3) cell lysate.

## | Contact information

Orders: order@immunoway.com  
Support: tech@immunoway.com  
Telephone: 877-594-3616 (Toll Free), 408-747-0185  
Website: <http://www.immunoway.com>  
Address: 2200 Ringwood Ave San Jose, CA 95131 USA



Please scan the QR code  
to access additional  
product information:  
**PAX-8 (4H15) Mouse  
mAb**

---

For Research Use Only. Not for Use in Diagnostic Procedures.

[Antibody](#) | [ELISA Kits](#) | [Protein](#) | [Reagents](#)