

## p14ARF Mouse mAb

CatalogNo: YM0494 Orthogonal Validated 

### Key Features

#### Host Species

- Mouse

#### Reactivity

- Human, Mouse, Rat

#### Applications

- WB, IHC, IF, ELISA

#### MW

- 14kD (Calculated)

### Storage

**Storage\*** -15°C to -25°C/1 year (Do not lower than -25°C)

**Formulation** Liquid in PBS containing 50% glycerol, 0.5% BSA and 0.02% sodium azide.

### Recommended Dilution Ratios

**WB 1:500-1:2000**

**IHC 1:200-1:1000**

**ELISA 1:10000**

**IF 1:50-200**

### Basic Information

**Clonality** Monoclonal

**Clone Number** 9G5

### Immunogen Information

**Immunogen** Purified recombinant fragment of p14ARF expressed in E. Coli.

**Specificity** p16 Monoclonal Antibody detects endogenous levels of p14ARF protein.

## Target Information

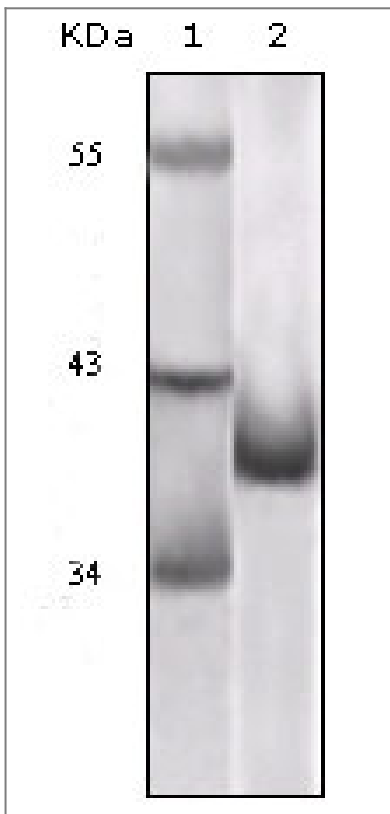
**Gene name** CDKN2A

**Protein Name** Cyclin-dependent kinase inhibitor 2A isoform 4

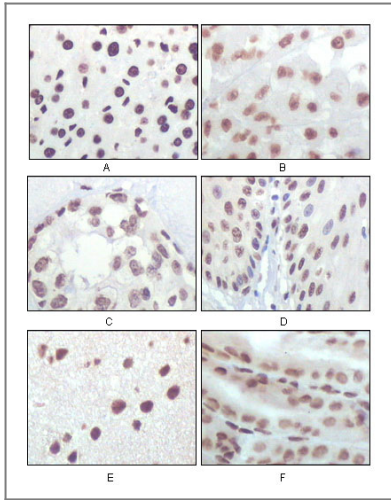
Organism	Gene ID	UniProt ID
Human	<a href="#">1029;</a>	<a href="#">Q8N726;</a>
Mouse	<a href="#">12578;</a>	<a href="#">Q64364;</a>
Rat		<a href="#">Q8QZZ9;</a>

**Cellular Localization** Nucleus, nucleolus . Nucleus, nucleoplasm .; [Isoform smARF]: Mitochondrion .

## Validation Data



Western Blot analysis using p16 Monoclonal Antibody against truncated p16 recombinant protein.



Immunohistochemistry analysis of paraffin-embedded rat liver tissue (A), human brain tumor (B), breast cancer (C), esophageal epithelium tissue (D), mouse brain tissue (E) and stomach tissue (F), showing nuclear localization with DAB staining using p16 Mon

## Contact information

Orders: [order@immunoway.com](mailto:order@immunoway.com)  
Support: [tech@immunoway.com](mailto:tech@immunoway.com)  
Telephone: 877-594-3616 (Toll Free), 408-747-0185  
Website: <http://www.immunoway.com>  
Address: 2200 Ringwood Ave San Jose, CA 95131 USA



Please scan the QR code to access additional product information:  
**p14ARF Mouse mAb**

For Research Use Only. Not for Use in Diagnostic Procedures.

[Antibody](#) | [ELISA Kits](#) | [Protein](#) | [Reagents](#)