

MEK Kinase-2 Mouse mAb

CatalogNo: YM0434

| Key Features

Host Species

- Mouse

Reactivity

- Human

Applications

- WB,IF,ELISA

MW

- 70kD (Calculated)

| Recommended Dilution Ratios

WB 1:500-1:2000

IF 1:200-1:1000

ELISA 1:10000

Not yet tested in other applications.

| Storage

Storage*

-15°C to -25°C/1 year(Do not lower than -25°C)

Formulation

Liquid in PBS containing 50% glycerol, 0.5% BSA and 0.02% sodium azide.

| Basic Information

Clonality

Monoclonal

| Immunogen Information

Immunogen

Purified recombinant fragment of human MEK Kinase-2 expressed in E. Coli.

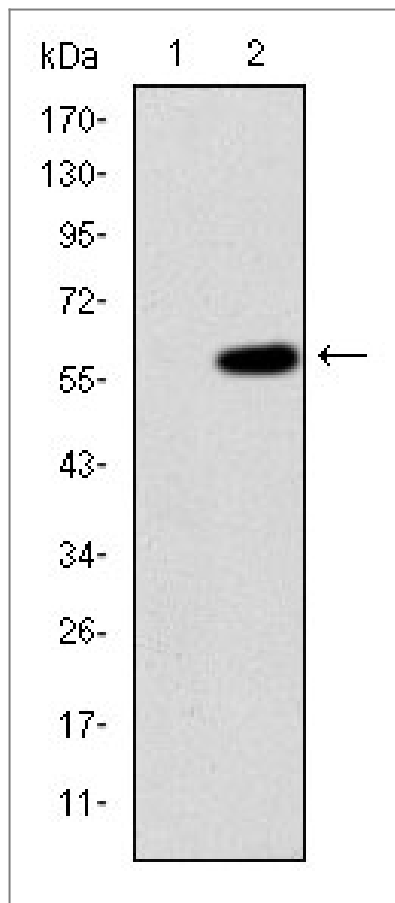
Specificity

MEK Kinase-2 Monoclonal Antibody detects endogenous levels of MEK Kinase-2 protein.

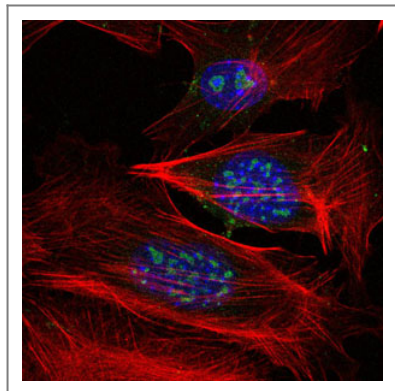
| Target Information

Gene name	MAP3K2		
Protein Name	Mitogen-activated protein kinase kinase kinase 2		
	Organism	Gene ID	UniProt ID
	Human	10746 ;	Q9Y2U5 ;
	Mouse		Q61083 ;
Cellular Localization	Cytoplasm . Nucleus . Upon EGF stimulation, translocates into the nucleus.		
Tissue specificity	Brain,Platelet,T-cell,Teratocarcinoma,Whole embryo,		
Function	Catalytic activity:ATP + a protein = ADP + a phosphoprotein.,cofactor:Magnesium.,enzyme regulation:Activated by phosphorylation on Thr-524.,Function:Component of a protein kinase signal transduction cascade. Regulates the JNK and ERK5 pathways by phosphorylating and activating MAP2K5 and MAP2K7 (By similarity). Plays a role in caveolae kiss-and-run dynamics.,PTM:Autophosphorylated.,similarity:Belongs to the protein kinase superfamily. STE Ser/Thr protein kinase family. MAP kinase kinase kinase subfamily.,similarity:Contains 1 OPR domain.,similarity:Contains 1 protein kinase domain.,subcellular location:Upon EGF stimulation, translocates into the nucleus.,subunit:Binds both upstream activators and downstream substrates in multimolecular complexes.,		

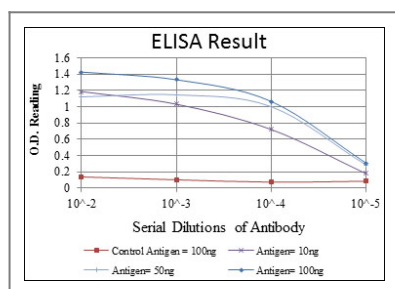
| Validation Data



Western Blot analysis using MEK Kinase-2 Monoclonal Antibody against HEK293 (1) and MAP3K2-hlgGfC transfected HEK293 (2) cell lysate.



Immunofluorescence analysis of 3T3-L1 cells using MEK Kinase-2 Monoclonal Antibody (green). Blue: DRAQ5 fluorescent DNA dye. Red: Actin filaments have been labeled with Alexa Fluor-555 phalloidin.



Contact information

Orders: order@immunoway.com
Support: tech@immunoway.com
Telephone: 877-594-3616 (Toll Free), 408-747-0185
Website: <http://www.immunoway.com>
Address: 2200 Ringwood Ave San Jose, CA 95131 USA



Please scan the QR code
to access additional
product information:
**MEK Kinase-2
Mouse mAb**

For Research Use Only. Not for Use in Diagnostic Procedures.

[Antibody](#) | [ELISA Kits](#) | [Protein](#) | [Reagents](#)