

KLHL22 Mouse mAb

CatalogNo: YM0403

Key Features

Host Species

- Mouse

Reactivity

- Human

Applications

- WB,IF,ELISA

MW

- 72kD (Calculated)

Storage

Storage* -15°C to -25°C/1 year(Do not lower than -25°C)

Formulation Liquid in PBS containing 50% glycerol, 0.5% BSA and 0.02% sodium azide.

Recommended Dilution Ratios

WB 1:500-1:2000

IF 1:200-1:1000

ELISA 1:10000

Not yet tested in other applications.

Basic Information

Clonality Monoclonal

Clone Number 3E12

Immunogen Information

Immunogen Purified recombinant fragment of human KLHL22 expressed in E. Coli.

Specificity KLHL22 Monoclonal Antibody detects endogenous levels of KLHL22 protein.

| Target Information

Gene name KLHL22

Protein Name Kelch-like protein 22

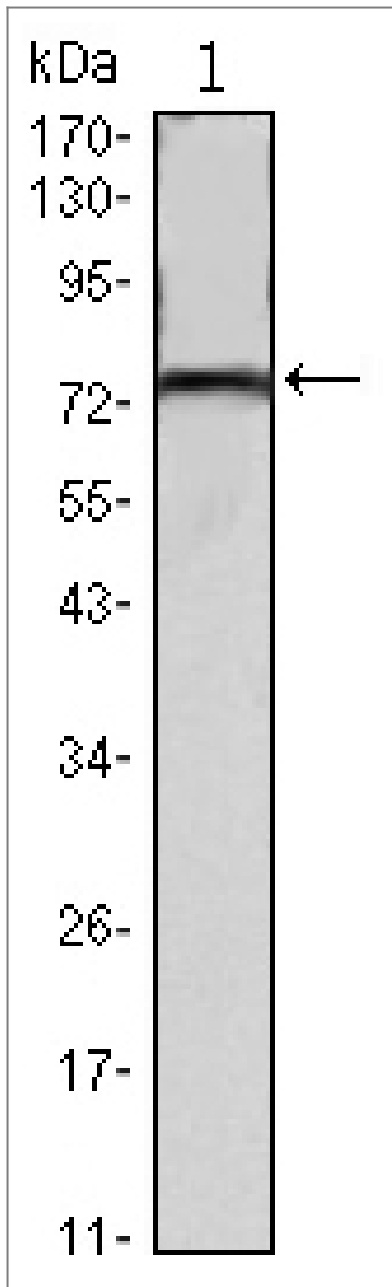
| Organism | Gene ID | UniProt ID |
|----------|-------------------------|--------------------------|
| Human | 84861 ; | Q53GT1 ; |
| Mouse | | Q99JN2 ; |

Cellular Localization Cytoplasm, cytosol . Cytoplasm, cytoskeleton, microtubule organizing center, centrosome . Cytoplasm, cytoskeleton, spindle . Nucleus . Lysosome . Mainly cytoplasmic in prophase and prometaphase. Associates with the mitotic spindle as the cells reach chromosome bi-orientation. Localizes to the centrosomes shortly before cells enter anaphase After anaphase onset, predominantly associates with the polar microtubules connecting the 2 opposing centrosomes and gradually diffuses into the cytoplasm during telophase (PubMed:23455478). Localizes to the nucleus upon amino acid starvation (PubMed:29769719). Relocalizes to the cytosol and associates with lysosomes when amino acids are available (PubMed:29769719). .

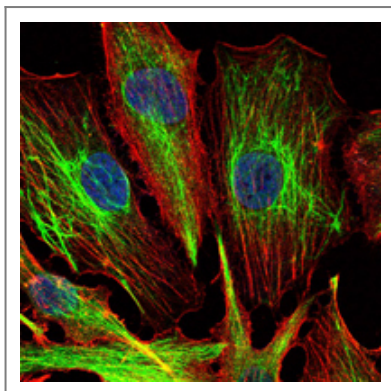
Tissue specificity Embryo,Kidney,Liver,

Function similarity:Contains 1 BTB (POZ) domain.,similarity:Contains 6 Kelch repeats.,

| Validation Data



Western Blot analysis using KLHL22 Monoclonal Antibody against mouse brain tissues lysate.



Immunofluorescence analysis of U251 cells using KLHL22 Monoclonal Antibody (green). Blue: DRAQ5 fluorescent DNA dye. Red: Actin filaments have been labeled with Alexa Fluor-555 phalloidin.

Contact information

Orders: order@immunoway.com
Support: tech@immunoway.com
Telephone: 877-594-3616 (Toll Free), 408-747-0185
Website: <http://www.immunoway.com>
Address: 2200 Ringwood Ave San Jose, CA 95131 USA



Please scan the QR code
to access additional
product information:
KLHL22 Mouse mAb

For Research Use Only. Not for Use in Diagnostic Procedures.

[Antibody](#) | [ELISA Kits](#) | [Protein](#) | [Reagents](#)