

## KLHL12 Mouse mAb

CatalogNo: YM0400

### Key Features

#### Host Species

- Mouse

#### Reactivity

- Human

#### Applications

- WB,ELISA

#### MW

- 63kD (Calculated)

### Storage

**Storage\*** -15°C to -25°C/1 year(Do not lower than -25°C)

**Formulation** Liquid in PBS containing 50% glycerol, 0.5% BSA and 0.02% sodium azide.

### Recommended Dilution Ratios

**WB 1:500-1:2000**

**ELISA 1:10000**

**Not yet tested in other applications.**

### Basic Information

**Clonality** Monoclonal

**Clone Number** 13B6

### Immunogen Information

**Immunogen** Purified recombinant fragment of human KLHL12 expressed in E. Coli.

**Specificity** KLHL12 Monoclonal Antibody detects endogenous levels of KLHL12 protein.

### Target Information

**Gene name** KLHL12

**Protein Name** Kelch-like protein 12

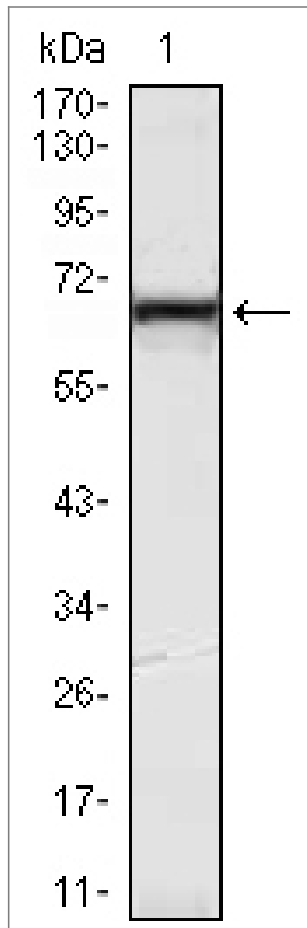
| Organism | Gene ID                 | UniProt ID               |
|----------|-------------------------|--------------------------|
| Human    | <a href="#">59349</a> ; | <a href="#">Q53G59</a> ; |
| Mouse    |                         | <a href="#">Q8BZM0</a> ; |

**Cellular Localization** Cytoplasmic vesicle, COPII-coated vesicle .

**Tissue specificity** Ubiquitously expressed. Highly expressed in testis and at lower levels in the submandibular salivary gland.

**Function** Domain:The BTB domain is required for interaction with CUL3.,Function:Serves as a substrate-specific adapter for the CUL3-based ubiquitin-protein E3 ligase complex. Negatively regulates the Wnt signaling pathway via the targeted ubiquitination and subsequent proteolysis of DVL3.,similarity:Contains 1 BTB (POZ) domain.,similarity:Contains 6 Kelch repeats.,subunit:Component of an ubiquitin-protein E3 ligase complex which includes at least CUL3 and KLHL12. This complex interacts with DVL3 upon activation of the Wnt signaling pathway by WNT3A.,tissue specificity:Highly expressed in testis and at lower levels in the submandibular salivary gland.,

## Validation Data



Western Blot analysis using KLHL12 Monoclonal Antibody against HeLa (1) cell lysate.

## | Contact information

Orders: order@immunoway.com  
Support: tech@immunoway.com  
Telephone: 877-594-3616 (Toll Free), 408-747-0185  
Website: <http://www.immunoway.com>  
Address: 2200 Ringwood Ave San Jose, CA 95131 USA



Please scan the QR code  
to access additional  
product information:  
**KLHL12 Mouse mAb**

---

For Research Use Only. Not for Use in Diagnostic Procedures.

[Antibody](#) | [ELISA Kits](#) | [Protein](#) | [Reagents](#)