

IKKε Mouse mAb

CatalogNo: YM0364

Key Features

Host Species

- Mouse

Reactivity

- Human

Applications

- WB,ELISA

MW

- 80kD (Calculated)

Storage

Storage* -15°C to -25°C/1 year(Do not lower than -25°C)

Formulation Liquid in PBS containing 50% glycerol, 0.5% BSA and 0.02% sodium azide.

Recommended Dilution Ratios

WB 1:500-1:2000

ELISA 1:10000

Not yet tested in other applications.

Basic Information

Clonality Monoclonal

Clone Number 13C9

Immunogen Information

Immunogen Purified recombinant fragment of IKKε (aa1-257) expressed in E. Coli.

Specificity IKKε Monoclonal Antibody detects endogenous levels of IKKε protein.

Target Information

Gene name IKBKE IKKE IKKI KIAA0151

Protein Name Inhibitor of nuclear factor kappa-B kinase subunit epsilon

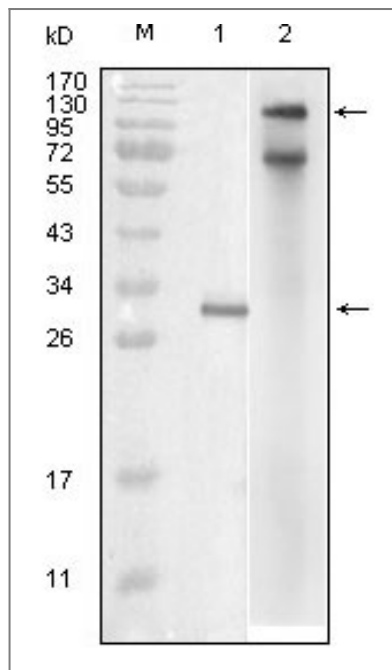
Organism	Gene ID	UniProt ID
Human	9641;	Q14164;

Cellular Localization Cytoplasm . Nucleus. Nucleus, PML body . Targeting to PML nuclear bodies upon DNA damage is TOPORS-dependent (PubMed:20188669). Located diffusely throughout the cytoplasm but locates to punctate cytoplasmic bodies when coexpressed with TRIM6 (PubMed:24882218). .

Tissue specificity Highly expressed in spleen followed by thymus, peripheral blood leukocytes, pancreas, placenta. Weakly expressed in lung, kidney, prostate, ovary and colon.

Function Catalytic activity:ATP + [I-kappa-B protein] = ADP + [I-kappa-B phosphoprotein].,Function:Phosphorylates inhibitors of NF-kappa-B thus leading to the dissociation of the inhibitor/NF-kappa-B complex and ultimately the degradation of the inhibitor. May play a special role in the immune response.,PTM:Autophosphorylated.,similarity:Belongs to the protein kinase superfamily. Ser/Thr protein kinase family. I-kappa-B kinase subfamily.,similarity:Contains 1 protein kinase domain.,subunit:May interact with MAVS/IPS1. Interacts with AZI2. Interacts with SIKE. Interacts with TICAM1/TRIF, IRF3 and DDX58/RIG-I, interactions are disrupted by the interaction between IKBKE and SIKE.,tissue specificity:Highly expressed in spleen followed by thymus, peripheral blood leukocytes, pancreas, placenta. Weakly expressed in lung, kidney, prostate, ovary and colon.,

Validation Data



Western Blot analysis using IKK ϵ Monoclonal Antibody against truncated IKK ϵ recombinant protein (1) and full-length IKK ϵ (aa1-716)-hlgGfc transfected COS7 cell lysate (2).

| Contact information

Orders: order@immunoway.com
Support: tech@immunoway.com
Telephone: 877-594-3616 (Toll Free), 408-747-0185
Website: <http://www.immunoway.com>
Address: 2200 Ringwood Ave San Jose, CA 95131 USA



Please scan the QR code
to access additional
product information:
IKK ϵ Mouse mAb

For Research Use Only. Not for Use in Diagnostic Procedures.

[Antibody](#) | [ELISA Kits](#) | [Protein](#) | [Reagents](#)