

ETS1 Mouse mAb

CatalogNo: YM0255

Key Features

Host Species

- Mouse

Reactivity

- Human

Applications

- WB,IHC,IF,FC,ELISA

MW

- 50kD (Calculated)

Storage

Storage* -15°C to -25°C/1 year(Do not lower than -25°C)

Formulation Liquid in PBS containing 50% glycerol, 0.5% BSA and 0.02% sodium azide.

Recommended Dilution Ratios

WB 1:500-1:2000

IHC 1:200-1:1000

IF 1:200-1:1000

Flow Cyt 1:200-1:400

ELISA 1:10000

Not yet tested in other applications.

Basic Information

Clonality Monoclonal

Clone Number 7A8

Immunogen Information

Immunogen Purified recombinant fragment of human ETS1 expressed in E. Coli.

Specificity ETS1 Monoclonal Antibody detects endogenous levels of ETS1 protein.

| Target Information

Gene name ETS1

Protein Name Protein C-ets-1

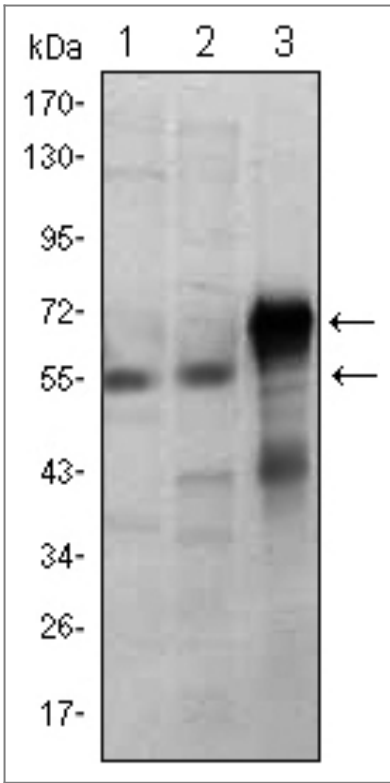
Organism	Gene ID	UniProt ID
Human	2113 ;	P14921 ;
Mouse	23871 ;	P27577 ;

Cellular Localization Cytoplasm . Nucleus . Delocalizes from nucleus to cytoplasm when coexpressed with isoform Ets-1 p27. .

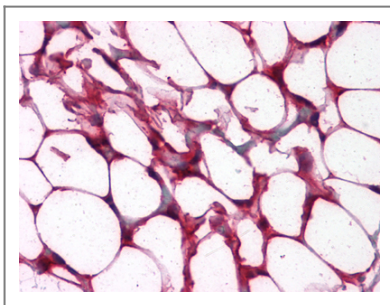
Tissue specificity Highly expressed within lymphoid cells. Isoforms c-ETS-1A and Ets-1 p27 are both detected in all fetal tissues tested, but vary with tissue type in adult tissues. None is detected in brain or kidney.

Function Disease:ETS is responsible for erythroblast and fibroblast transformation. The juxtaposition of the interferon and c-ETS-1 proto-oncogene may be involved in the pathogenesis of human monocytic leukemia.,Function:Transcription factor.,PTM:Sumoylated on Lys-15 and Lys-227, preferentially by SUMO2; which inhibits transcriptional activity.,PTM:Ubiquitinated; which induces proteasomal degradation.,similarity:Belongs to the ETS family.,similarity:Contains 1 ETS DNA-binding domain.,similarity:Contains 1 PNT (pointed) domain.,subunit:Interacts with MAF and MAFB (By similarity). Binds to DAXX. Interacts with UBE2L.,

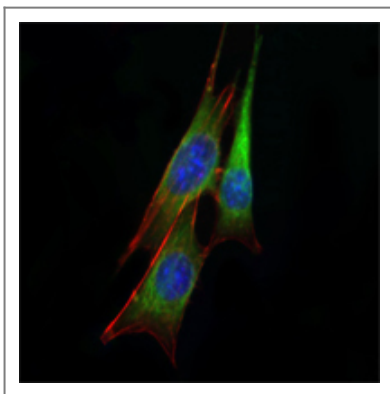
| Validation Data



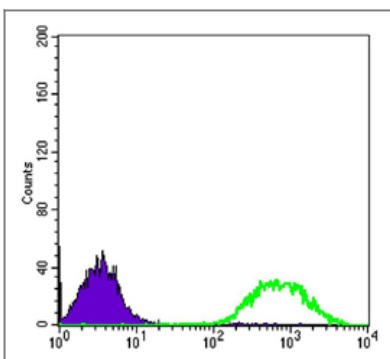
Western Blot analysis using ETS1 Monoclonal Antibody against Jurkat (1), HepG2 (2) and ETS1-hlgGfc transfected HEK293 (3) cell lysate.



Immunohistochemistry analysis of paraffin-embedded human Colon, Adipocytes tissues with AEC staining using ETS1 Monoclonal Antibody.



Immunofluorescence analysis of NIH/3T3 cells using ETS1 Monoclonal Antibody (green). Blue: DRAQ5 fluorescent DNA dye.



Flow cytometric analysis of Jurkat cells using ETS1 Monoclonal Antibody (green) and negative control (purple).

| Contact information

Orders: order@immunoway.com
Support: tech@immunoway.com
Telephone: 877-594-3616 (Toll Free), 408-747-0185
Website: <http://www.immunoway.com>
Address: 2200 Ringwood Ave San Jose, CA 95131 USA



Please scan the QR code
to access additional
product information:
ETS1 Mouse mAb

For Research Use Only. Not for Use in Diagnostic Procedures.

[Antibody](#) | [ELISA Kits](#) | [Protein](#) | [Reagents](#)