

Calnexin Mouse mAb

CatalogNo: YM0089

Key Features

Host Species

- Mouse

Reactivity

- Human

Applications

- WB,IF,ELISA

MW

- 68kD (Calculated)

Recommended Dilution Ratios

WB 1:500-1:2000

IF 1:200-1:1000

ELISA 1:10000

Not yet tested in other applications.

Storage

Storage* -15°C to -25°C/1 year(Do not lower than -25°C)

Formulation Liquid in PBS containing 50% glycerol, 0.5% BSA and 0.02% sodium azide.

Basic Information

Clonality Monoclonal

Clone Number 10E1

Immunogen Information

Immunogen Synthetic peptide corresponding to aa (CEAAEERPWLWVVYILTVAL) of human Calnexin, conjugated to KLH.

Specificity Calnexin Monoclonal Antibody detects endogenous levels of Calnexin protein.

| Target Information

Gene name CANX

Protein Name Calnexin

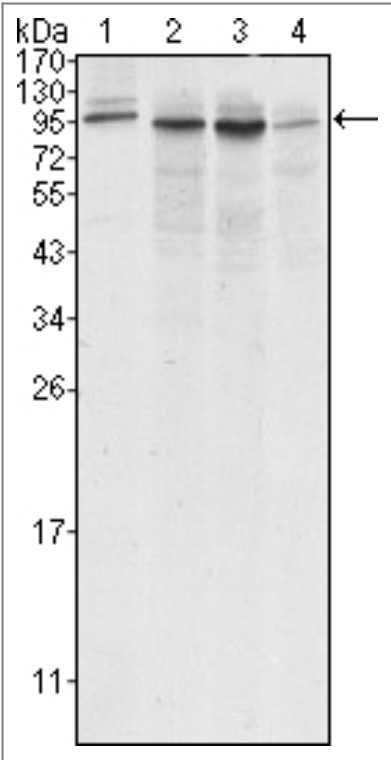
Organism	Gene ID	UniProt ID
Human	821 ;	P27824 ;
Mouse		P35564 ;

Cellular Localization Endoplasmic reticulum membrane ; Single-pass type I membrane protein . Endoplasmic reticulum . Melanosome . Identified by mass spectrometry in melanosome fractions from stage I to stage IV (PubMed:12643545, PubMed:17081065). The palmitoylated form preferentially localizes to the perinuclear rough ER (PubMed:22314232). .

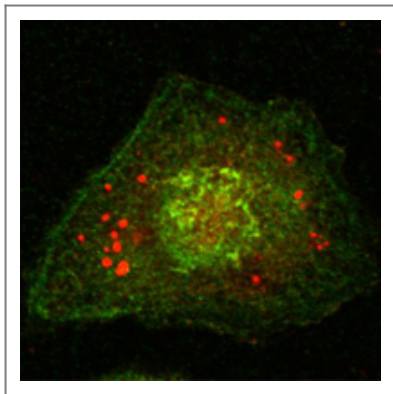
Tissue specificity B-cell lymphoma,Epithelium,Fibroblast,Keratinocyte,Kidney,Liver,Lymph,Placenta,Platelet,

Function Function:Calcium-binding protein that interacts with newly synthesized glycoproteins in the endoplasmic reticulum. It may act in assisting protein assembly and/or in the retention within the ER of unassembled protein subunits. It seems to play a major role in the quality control apparatus of the ER by the retention of incorrectly folded proteins.,online information:Calnexin entry,similarity:Belongs to the calreticulin family.,subcellular location:Identified by mass spectrometry in melanosome fractions from stage I to stage IV.,

| Validation Data



Western Blot analysis using Calnexin Monoclonal Antibody against A431 (1), HeLa (2), MCF-7 (3) and A549 (4) cell lysate.



Confocal immunofluorescence analysis of HeLa cells using Calnexin Monoclonal Antibody (green).

| Contact information

Orders: order@immunoway.com
Support: tech@immunoway.com
Telephone: 877-594-3616 (Toll Free), 408-747-0185
Website: <http://www.immunoway.com>
Address: 2200 Ringwood Ave San Jose, CA 95131 USA



Please scan the QR code
to access additional
product information:
**Calnexin Mouse
mAb**

For Research Use Only. Not for Use in Diagnostic Procedures.

[Antibody](#) | [ELISA Kits](#) | [Protein](#) | [Reagents](#)