

ABL1 Mouse mAb

CatalogNo: YM0087

Key Features

Host Species

- Mouse

Reactivity

- Human

Applications

- WB,ELISA

MW

- 123kD (Calculated)

Recommended Dilution Ratios

WB 1:500-1:2000

ELISA 1:10000

Not yet tested in other applications.

Storage

Storage* -15°C to -25°C/1 year(Do not lower than -25°C)

Formulation Liquid in PBS containing 50% glycerol, 0.5% BSA and 0.02% sodium azide.

Basic Information

Clonality Monoclonal

Immunogen Information

Immunogen Purified recombinant fragment of c-Abl (aa577-650) expressed in E. Coli.

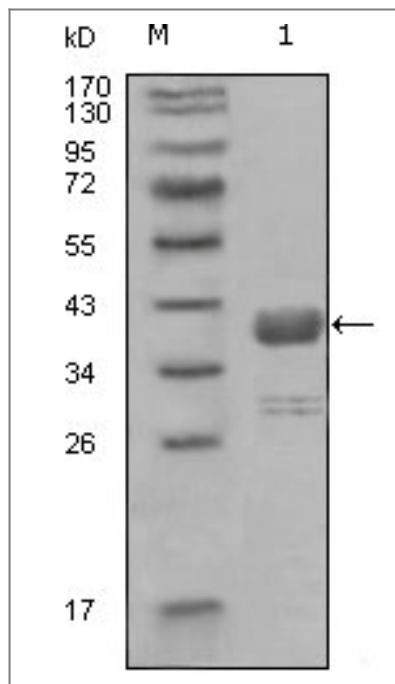
Specificity ABL1 Monoclonal Antibody detects endogenous levels of ABL1 protein.

Target Information

Gene name ABL1 ABL JTK7

Protein Name	Tyrosine-protein kinase ABL1		
	Organism	Gene ID	UniProt ID
	Human	25 ;	P00519 ;
	Mouse	11350 ;	P00520 ;
	Rat	311860 ;	
Cellular Localization	Cytoplasm > cytoskeleton. Nucleus. Sequestered into the cytoplasm through interaction with 14-3-3 proteins and Nucleus membrane. The myristoylated c-ABL protein is reported to be nuclear.		
Tissue specificity	Widely expressed.		
Function	<p>Catalytic activity:ATP + a [protein]-L-tyrosine = ADP + a [protein]-L-tyrosine phosphate.,cofactor:Magnesium or manganese.,Disease:A chromosomal aberration involving ABL1 is a cause of chronic myeloid leukemia (CML) [MIM:608232]. Translocation t(9;22)(q34;q11) with BCR. The translocation produces a BCR-ABL found also in acute myeloid leukemia (AML) and acute lymphoblastic leukemia (ALL).,enzyme regulation:Stabilized in the inactive form by an association between the SH3 domain and the SH2-TK linker region, interactions of the amino-terminal cap, and contributions from an amino-terminal myristoyl group and phospholipids. Activated by autophosphorylation as well as by SRC-family kinase-mediated phosphorylation. Activated by RIN1 binding to the SH2 and SH3 domains. Inhibited by imatinib mesylate (Gleevec) which is used for the treatment of chronic myeloid leukemia (CML).,Function:Regulates cytoskeleton remodeling during cell differentiation, cell division and cell adhesion. Localizes to dynamic actin structures, and phosphorylates CRK and CRKL, DOK1, and other proteins controlling cytoskeleton dynamics. Regulates DNA repair potentially by activating the proapoptotic pathway when the DNA damage is too severe to be repaired.,online information:Abl entry,PTM:Phosphorylated by PRKDC (By similarity). DNA damage-induced activation of c-Abl requires the function of ATM and Ser-446 phosphorylation. Isoform IB is myristoylated on Gly-2. Phosphorylation on Thr-735 is required for binding 14-3-3 proteins for cytoplasmic translocation.,similarity:Belongs to the protein kinase superfamily. Tyr protein kinase family.,similarity:Belongs to the protein kinase superfamily. Tyr protein kinase family. ABL subfamily.,similarity:Contains 1 protein kinase domain.,similarity:Contains 1 SH2 domain.,similarity:Contains 1 SH3 domain.,subcellular location:The myristoylated c-ABL protein is reported to be nuclear. Sequestered into the cytoplasm through interaction with 14-3-3 proteins.,subunit:Interacts with SORBS1 following insulin stimulation. Found in a trimolecular complex containing CDK5 and CABLES1. Interacts with CABLES1 and PSTPIP1. Interacts with ZDHHC16 (By similarity). Interacts with INPPL1/SHIP2. Interacts with the 14-3-3 proteins, YWHAB, YWHAE, YWHAG, YWHAH, SFN AND YWHAZ; the interaction with 14-3-3 proteins requires phosphorylation on Thr-735 and, sequesters ABL1 into the cytoplasm.,tissue specificity:Widely expressed.,</p>		

| Validation Data



Western Blot analysis using c-Abl Monoclonal Antibody against truncated GST-ABL1 recombinant protein (1).

Contact information

Orders: order@immunoway.com
 Support: tech@immunoway.com
 Telephone: 877-594-3616 (Toll Free), 408-747-0185
 Website: <http://www.immunoway.com>
 Address: 2200 Ringwood Ave San Jose, CA 95131 USA



Please scan the QR code to access additional product information:
ABL1 Mouse mAb

For Research Use Only. Not for Use in Diagnostic Procedures.

[Antibody](#) | [ELISA Kits](#) | [Protein](#) | [Reagents](#)