

## Beclin-1 Mouse mAb

CatalogNo: YM0060 Orthogonal Validated 

### Key Features

#### Host Species

- Mouse

#### Reactivity

- Human

#### Applications

- WB,IHC,IF,FC,ELISA

#### MW

- 52kD (Calculated)

### Storage

**Storage\*** -15°C to -25°C/1 year(Do not lower than -25°C)

**Formulation** Liquid in PBS containing 50% glycerol, 0.5% BSA and 0.02% sodium azide.

### Recommended Dilution Ratios

**WB 1:500-1:2000**

**IHC 1:200-1:1000**

**Flow Cyt 1:200-1:400**

**ELISA 1:10000**

**IF 1:50-200**

### Basic Information

**Clonality** Monoclonal

**Clone Number** 2D11

### Immunogen Information

**Immunogen** Purified recombinant fragment of human Beclin-1 expressed in E. Coli.

**Specificity** Beclin-1 Monoclonal Antibody detects endogenous levels of Beclin-1 protein.

## Target Information

**Gene name** BECN1

**Protein Name** Beclin-1

Organism	Gene ID	UniProt ID
Human	<a href="#">8678</a> ;	<a href="#">Q14457</a> ;
Mouse		<a href="#">O88597</a> ;

### Cellular Localization

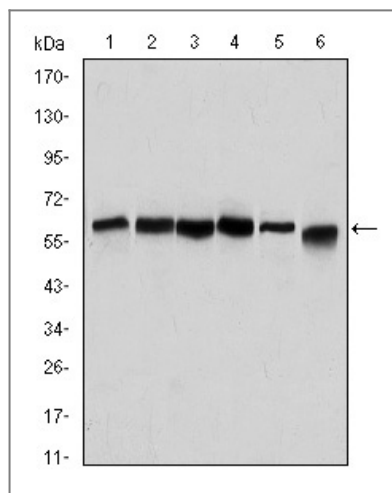
Cytoplasm . Golgi apparatus, trans-Golgi network membrane ; Peripheral membrane protein . Endosome membrane ; Peripheral membrane protein . Endoplasmic reticulum membrane ; Peripheral membrane protein . Mitochondrion membrane ; Peripheral membrane protein . Endosome . Cytoplasmic vesicle, autophagosome . Interaction with ATG14 promotes translocation to autophagosomes. Expressed in dendrites and cell bodies of cerebellar Purkinje cells (By similarity). . ; [Beclin-1-C 35 kDa]: Mitochondrion . Nucleus . Cytoplasm . ; [Beclin-1-C 37 kDa]: Mitochondrion .

**Tissue specificity** Ubiquitous.

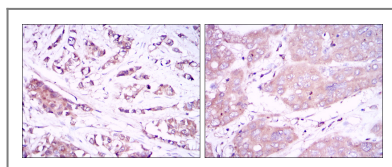
### Function

Function:Plays a central role in autophagy (By similarity). May play a role in antiviral host defense. Protects against infection by a neurovirulent strain of Sindbis virus.,similarity:Belongs to the beclin family.,subcellular location:Expressed in dendrites and cell bodies of cerebellar Purkinje cells.,subunit:Interacts with GOPC and GRID2. Interacts with AMBRA1. Probably forms a complex with AMBRA1 and PIK3C3 (By similarity). Interacts with BCL2 and BCL2L1.,tissue specificity:Ubiquitous.,

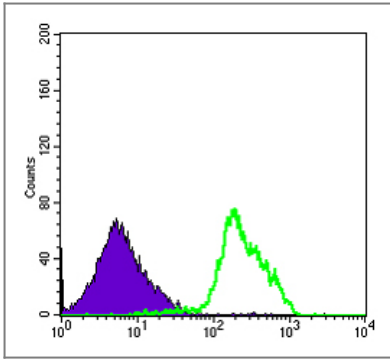
## Validation Data



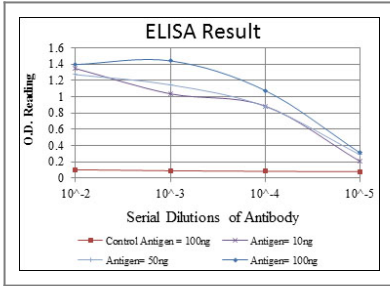
Western Blot analysis using Beclin-1 Monoclonal Antibody against HeLa (1), A431 (2), MCF-7 (3), RAJI (4), Jurkat (5) and SKBR-3 (6) cell lysate.



Immunohistochemistry analysis of paraffin-embedded breast cancer tissues (left) and liver cancer tissues (right) with DAB staining using Beclin-1 Monoclonal Antibody.



Flow cytometric analysis of RAJI cells using Beclin-1 Monoclonal Antibody (green) and negative control (purple).



## Contact information

Orders: [order@immunoway.com](mailto:order@immunoway.com)  
 Support: [tech@immunoway.com](mailto:tech@immunoway.com)  
 Telephone: 877-594-3616 (Toll Free), 408-747-0185  
 Website: <http://www.immunoway.com>  
 Address: 2200 Ringwood Ave San Jose, CA 95131 USA



Please scan the QR code to access additional product information:  
**Beclin-1 Mouse mAb**

For Research Use Only. Not for Use in Diagnostic Procedures.

[Antibody](#) | [ELISA Kits](#) | [Protein](#) | [Reagents](#)