

## Cleaved THRB (heavy chain,Ile364) Rabbit pAb

CatalogNo: YC0207

### Key Features

#### Host Species

- Rabbit

#### Reactivity

- Human,Mouse,Rat

#### Applications

- WB,ELISA,IHC

#### MW

- 28kD,63kD (Observed)

#### Isotype

- IgG

### Storage

**Storage\*** -15°C to -25°C/1 year(Do not lower than -25°C)

**Formulation** Liquid in PBS containing 50% glycerol, 0.5% BSA and 0.02% sodium azide.

### Recommended Dilution Ratios

**WB 1:500-2000**

**IHC 1:50-300**

**ELISA 1:2000-20000**

### Basic Information

**Clonality** Polyclonal

### Immunogen Information

**Immunogen** Synthesized peptide derived from human THRB (heavy chain, Cleaved-Ile364)

**Specificity** This antibody detects endogenous levels of Human,Mouse,Rat THRB (heavy chain, Cleaved-Ile364, protein was cleaved amino acid sequence between 363-364 )

### Target Information

**Gene name** F2

**Protein Name** THRB (heavy chain, Cleaved-Ile364)

Organism	Gene ID	UniProt ID
Human	<a href="#">2147;</a>	<a href="#">P00734;</a>
Mouse	<a href="#">14061;</a>	<a href="#">P19221;</a>
Rat		<a href="#">P18292;</a>

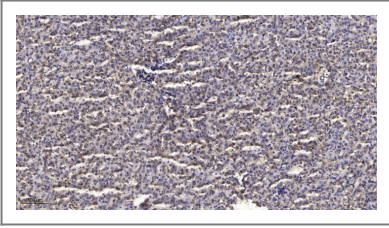
**Cellular Localization** Secreted, extracellular space.

**Tissue specificity** Expressed by the liver and secreted in plasma.

## Function

protein import into nucleus, translocation, cell activation, regulation of protein amino acid phosphorylation, positive regulation of protein amino acid phosphorylation, acute inflammatory response, protein amino acid phosphorylation, proteolysis, protein targeting, protein import into nucleus, phosphorus metabolic process, phosphate metabolic process, ion transport, cation transport, calcium ion transport, cellular ion homeostasis, cellular calcium ion homeostasis, cellular metal ion homeostasis, intracellular protein transport, nucleocytoplasmic transport, apoptosis, activation of caspase activity, defense response, acute-phase response, inflammatory response, cell surface receptor linked signal transduction, elevation of cytosolic calcium ion concentration, intracellular signaling cascade, protein kinase cascade, JAK-STAT cascade, tyrosine phosphorylation of STAT protein, STAT protein nuclear translocation, blood coagulation, hemostasis, protein localization, cell death, response to wounding, positive regulation of biosynthetic process, regulation of calcium ion transport into cytosol, positive regulation of calcium ion transport into cytosol, positive regulation of macromolecule biosynthetic process, positive regulation of phosphorus metabolic process, positive regulation of macromolecule metabolic process, regulation of collagen metabolic process, positive regulation of collagen metabolic process, regulation of cell death, positive regulation of peptidase activity, regulation of metal ion transport, programmed cell death, protein transport, di-, tri-valent inorganic cation transport, death, phosphorylation, protein import, peptidyl-tyrosine phosphorylation, peptidyl-tyrosine modification, regulation of phosphate metabolic process, cellular homeostasis, metal ion transport, cellular cation homeostasis, cellular di-, tri-valent inorganic cation homeostasis, platelet activation, regulation of blood coagulation, positive regulation of blood coagulation, negative regulation of blood coagulation, regulation of protein modification process, positive regulation of protein modification process, regulation of response to external stimulus, regulation of cellular protein metabolic process, positive regulation of cellular protein metabolic process, regulation of homeostatic process, positive regulation of homeostatic process, regulation of collagen biosynthetic process, positive regulation of collagen biosynthetic process, protein localization in organelle, protein localization in nucleus, cellular protein localization, wound healing, regulation of phosphorylation, positive regulation of phosphorylation, homeostatic process, fibrinolysis, regulation of apoptosis, regulation of programmed cell death, positive regulation of catalytic activity, regulation of ion transport, positive regulation of ion transport, positive regulation of caspase activity, regulation of caspase activity, positive regulation of molecular function, regulation of multicellular organismal metabolic process, positive regulation of multicellular organismal metabolic process, establishment of protein localization, positive regulation of phosphate metabolic process, intracellular transport, chemical homeostasis, ion homeostasis, coagulation, regulation of coagulation, negative regulation of coagulation, positive regulation of coagulation, regulation of body fluid levels, positive regulation of transport, nuclear transport, nuclear import, regulation of phosphorus metabolic process, release of sequestered calcium ion into cytosol, positive regulation of multicellular organismal process, negative regulation of multicellular organismal process, positive regulation of protein metabolic process, regulation of release of sequestered calcium ion into cytosol, positive regulation of release of sequestered calcium ion into cytosol, regulation of sequestering of calcium ion, negative regulation of sequestering of calcium ion, regulation of hydrolase activity, positive regulation of hydrolase activity, cytosolic calcium ion homeostasis, regulation of calcium ion transport, positive regulation of calcium ion transport, regulation of peptidase activity, regulation of endopeptidase activity, metal ion homeostasis, di-, tri-valent inorganic cation homeostasis, calcium ion homeostasis, cation homeostasis, cellular chemical homeostasis, cytosolic calcium ion transport, calcium ion transport into cytosol, cellular macromolecule localization,

## | Validation Data



Immunohistochemical analysis of paraffin-embedded human liver cancer. 1, Antibody was diluted at 1:200 (4°C overnight). 2, Tris-EDTA, pH 9.0 was used for antigen retrieval. 3, Secondary antibody was diluted at 1:200 (room temperature, 45min).

## | Contact information

Orders: [order@immunoway.com](mailto:order@immunoway.com)  
Support: [tech@immunoway.com](mailto:tech@immunoway.com)  
Telephone: 877-594-3616 (Toll Free), 408-747-0185  
Website: <http://www.immunoway.com>  
Address: 2200 Ringwood Ave San Jose, CA 95131 USA



Please scan the QR code to access additional product information:  
**Cleaved THRB  
(heavy chain, Ile364)  
Rabbit pAb**

For Research Use Only. Not for Use in Diagnostic Procedures.

[Antibody](#) | [ELISA Kits](#) | [Protein](#) | [Reagents](#)