

Cleaved Integrin $\alpha 3$ (heavy chain,Phe33) Rabbit pAb

CatalogNo: YC0168

Key Features

Host Species

- Rabbit

Reactivity

- Human,Mouse,Rat

Applications

- WB,IF,ELISA,IHC

MW

- 93kD,115kD (Observed)

Isotype

- IgG

Storage

Storage* -15°C to -25°C/1 year(Do not lower than -25°C)

Formulation Liquid in PBS containing 50% glycerol, 0.5% BSA and 0.02% sodium azide.

Recommended Dilution Ratios

WB 1:500-2000

IF/ICC1:50-200

ELISA 1:2000-20000

IHC 1:50-200

Basic Information

Clonality Polyclonal

Immunogen Information

Immunogen Synthesized peptide derived from human ITGA3 (heavy chain, Cleaved-Phe33)

Specificity This antibody detects endogenous levels of Human,Mouse,Rat ITGA3 (heavy chain, Cleaved-Phe33, protein was cleaved amino acid sequence between 32-33)

Target Information

Gene name ITGA3 MSK18

Protein Name ITGA3 (heavy chain, Cleaved-Phe33)

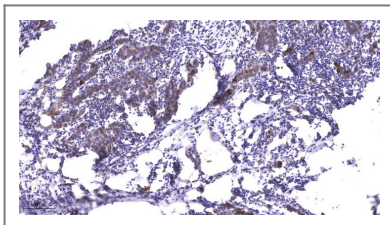
Organism	Gene ID	UniProt ID
Human	3675 ;	P26006 ;
Mouse	16400 ;	Q62470 ;

Cellular Localization Cell membrane ; Single-pass type I membrane protein . Cell membrane ; Lipid-anchor . Cell projection, invadopodium membrane ; Single-pass type I membrane protein . Cell projection, filopodium membrane ; Single-pass type I membrane protein . Enriched preferentially at invadopodia, cell membrane protrusions that correspond to sites of cell invasion, in a collagen-dependent manner. .

Tissue specificity Isoform 1 is widely expressed. Isoform 2 is expressed in brain and heart. In brain, both isoforms are exclusively expressed on vascular smooth muscle cells, whereas in heart isoform 1 is strongly expressed on vascular smooth muscle cells, isoform 2 is detected only on endothelial vein cells.

Function Function: Integrin alpha-3/beta-1 is a receptor for fibronectin, laminin, collagen, epiligrin, thrombospondin and CSPG4. Alpha-3/beta-1 may mediate with LGALS3 the stimulation by CSPG4 of endothelial cells migration.,PTM: Isoform alpha-3A, but not isoform alpha-3B, is phosphorylated on serine residues. Phosphorylation increases after phorbol 12-myristate 13-acetate stimulation. Isoform alpha-3A is phosphorylated on Tyr-1051.,similarity: Belongs to the integrin alpha chain family.,similarity: Contains 7 FG-GAP repeats.,subunit: Heterodimer of an alpha and a beta subunit. The alpha subunit is composed of an heavy and a light chain linked by a disulfide bond. Alpha-3 associates with beta-1. Interacts with HPS5.,tissue specificity: Isoform alpha-3A is widely expressed. Isoform alpha-3B is expressed in brain and heart. In brain, both isoforms are exclusively expressed on vascular smooth muscle cells, whereas in heart isoform alpha-3A is strongly expressed on vascular smooth muscle cells, isoform alpha-3B is detected only on endothelial vein cells.,

Validation Data



Immunohistochemical analysis of paraffin-embedded human Breast cancer. 1, Antibody was diluted at 1:200(4° overnight). 2, Tris-EDTA,pH9.0 was used for antigen retrieval. 3,Secondary antibody was diluted at 1:200(room temperature, 45min).

Contact information

Orders: order@immunoway.com
Support: tech@immunoway.com
Telephone: 877-594-3616 (Toll Free), 408-747-0185
Website: <http://www.immunoway.com>
Address: 2200 Ringwood Ave San Jose, CA 95131 USA



Please scan the QR code
to access additional
product information:
Cleaved Integrin α 3
(heavy chain,Phe33)
Rabbit pAb

For Research Use Only. Not for Use in Diagnostic Procedures.

[Antibody](#) | [ELISA Kits](#) | [Protein](#) | [Reagents](#)