

## Cleaved Integrin $\alpha$ 5 HC (Phe42) Rabbit pAb

CatalogNo: YC0088

Orthogonal Validated 

### Key Features

#### Host Species

- Rabbit

#### Reactivity

- Human, Mouse

#### Applications

- WB, ELISA

#### MW

- 92kD (Observed)

#### Isotype

- IgG

### Storage

**Storage\*** -15°C to -25°C/1 year (Do not lower than -25°C)

**Formulation** Liquid in PBS containing 50% glycerol, 0.5% BSA and 0.02% sodium azide.

### Recommended Dilution Ratios

**WB 1:500-1:2000**

**ELISA 1:10000**

**Not yet tested in other applications.**

### Basic Information

**Clonality** Polyclonal

### Immunogen Information

**Immunogen** The antiserum was produced against synthesized peptide derived from human ITGA5. AA range: 23-72

**Specificity** Cleaved-Integrin  $\alpha$ 5 HC (F42) Polyclonal Antibody detects endogenous levels of fragment of activated Integrin  $\alpha$ 5 HC protein resulting from cleavage adjacent to F42.

### Target Information

**Gene name** ITGA5

**Protein Name** Integrin alpha-5

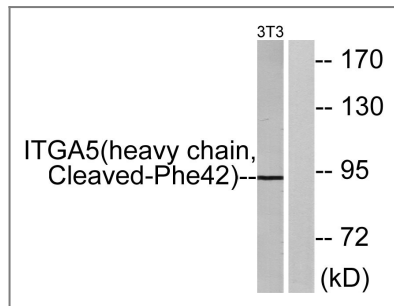
Organism	Gene ID	UniProt ID
Human	<a href="#">3678;</a>	<a href="#">P08648;</a>
Mouse	<a href="#">16402;</a>	<a href="#">P11688;</a>

**Cellular Localization** Membrane; Single-pass type I membrane protein. Cell junction, focal adhesion . Cell surface .

**Tissue specificity** Liver,Placenta,

**Function** Function: Integrin alpha-5/beta-1 is a receptor for fibronectin and fibrinogen. It recognizes the sequence R-G-D in its ligands. In case of HIV-1 infection, the interaction with extracellular viral Tat protein seems to enhance angiogenesis in Kaposi's sarcoma lesions.,similarity:Belongs to the integrin alpha chain family.,similarity:Contains 7 FG-GAP repeats.,subunit:Heterodimer of an alpha and a beta subunit. The alpha subunit is composed of an heavy and a light chain linked by a disulfide bond. Alpha-5 associates with beta-1. Interacts with HPS5 and NISCH. Interacts with HIV-1 Tat. Interacts with RAB21.,

## Validation Data



Western blot analysis of lysates from NIH/3T3 cells, treated with etoposide 25uM 24h, using ITGA5 (heavy chain, Cleaved-Phe42) Antibody. The lane on the right is blocked with the synthesized peptide.

## Contact information

Orders: [order@immunoway.com](mailto:order@immunoway.com)  
Support: [tech@immunoway.com](mailto:tech@immunoway.com)  
Telephone: 877-594-3616 (Toll Free), 408-747-0185  
Website: <http://www.immunoway.com>  
Address: 2200 Ringwood Ave San Jose, CA 95131 USA



Please scan the QR code to access additional product information:  
**Cleaved Integrin  $\alpha$ 5 HC (Phe42) Rabbit pAb**