

## Cleaved Thrombin APII (Arg327) Rabbit pAb

CatalogNo: YC0077 Orthogonal Validated 

### Key Features

#### Host Species

- Rabbit

#### Reactivity

- Human, Mouse, Rat

#### Applications

- WB, ELISA

#### MW

- 19kD (Observed)

#### Isotype

- IgG

### Storage

**Storage\*** -15°C to -25°C/1 year (Do not lower than -25°C)

**Formulation** Liquid in PBS containing 50% glycerol, 0.5% BSA and 0.02% sodium azide.

### Recommended Dilution Ratios

**WB 1:500-1:2000**

**ELISA 1:20000**

**Not yet tested in other applications.**

### Basic Information

**Clonality** Polyclonal

### Immunogen Information

**Immunogen** The antiserum was produced against synthesized peptide derived from human THRβ. AA range: 278-327

**Specificity** Cleaved-Thrombin APII (R327) Polyclonal Antibody detects endogenous levels of fragment of activated Thrombin APII protein resulting from cleavage adjacent to R327.

### Target Information

**Gene name** F2

**Protein Name** Prothrombin

Organism	Gene ID	UniProt ID
Human	<a href="#">2147;</a>	<a href="#">P00734;</a>
Mouse		<a href="#">P19221;</a>

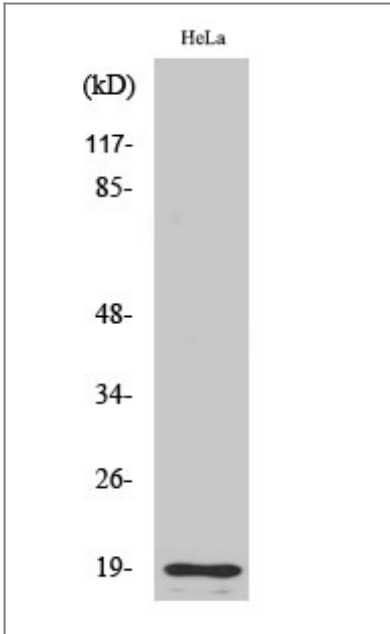
**Cellular Localization** Secreted, extracellular space.

**Tissue specificity** Expressed by the liver and secreted in plasma.

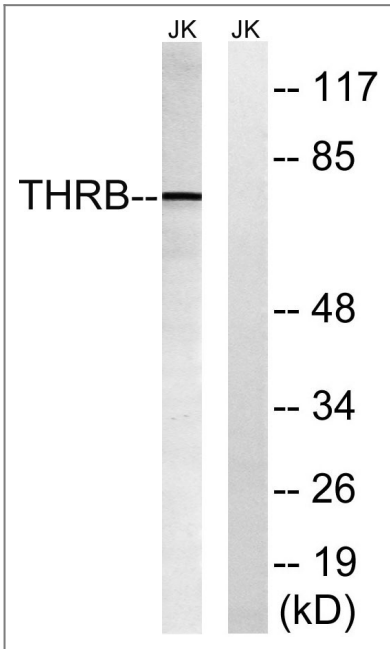
**Function** Catalytic activity: Selective cleavage of Arg-|-Gly bonds in fibrinogen to form fibrin and release fibrinopeptides A and B., Disease: Defects in F2 are the cause of various forms of dysprothrombinemia [MIM:176930]., Disease: Genetic variations in F2 may be a cause of susceptibility to ischemic stroke [MIM:601367]; also known as cerebrovascular accident or cerebral infarction. A stroke is an acute neurologic event leading to death of neural tissue of the brain and resulting in loss of motor, sensory and/or cognitive function. Ischemic strokes, resulting from vascular occlusion, is considered to be a highly complex disease consisting of a group of heterogeneous disorders with multiple genetic and environmental risk factors., Function: Thrombin, which cleaves bonds after Arg and Lys, converts fibrinogen to fibrin and activates factors V, VII, VIII, XIII, and, in complex with thrombomodulin, protein C. Functions in blood homeostasis, inflammation and wound healing., miscellaneous: It is not known whether 1 or 2 smaller activation peptides, with additional cleavage after Arg-314, are released in natural blood clotting., miscellaneous: Prothrombin is activated on the surface of a phospholipid membrane that binds the amino end of prothrombin and factors Va and Xa in Ca-dependent interactions; factor Xa removes the activation peptide and cleaves the remaining part into light and heavy chains. The activation process starts slowly because factor V itself has to be activated by the initial, small amounts of thrombin., miscellaneous: The cleavage after Arg-198, observed in vitro, does not occur in plasma., miscellaneous: Thrombin can itself cleave the N-terminal fragment (fragment 1) of the prothrombin, prior to its activation by factor Xa., online information: Thrombin entry, pharmaceutical: The peptide TP508 also known as Chrysalin (Orthologic) could be used to accelerate repair of both soft and hard tissues., PTM: The gamma-carboxyglutamyl residues, which bind calcium ions, result from the carboxylation of glutamyl residues by a microsomal enzyme, the vitamin K-dependent carboxylase. The modified residues are necessary for the calcium-dependent interaction with a negatively charged phospholipid surface, which is essential for the conversion of prothrombin to thrombin., similarity: Belongs to the peptidase S1 family., similarity: Contains 1 Gla (gamma-carboxy-glutamate) domain., similarity: Contains 1 peptidase S1 domain., similarity: Contains 2 kringle domains., tissue specificity: Expressed by the liver and secreted in plasma.,

---

## Validation Data



Western Blot analysis of various cells using Cleaved-Thrombin APII (R327) Polyclonal Antibody



Western blot analysis of lysates from Jurkat cells, treated with etoposide 25uM 24H, using THRβ (AP2,Cleaved-Arg327) Antibody. The lane on the right is blocked with the synthesized peptide.

## Contact information

Orders: [order@immunoway.com](mailto:order@immunoway.com)  
 Support: [tech@immunoway.com](mailto:tech@immunoway.com)  
 Telephone: 877-594-3616 (Toll Free), 408-747-0185  
 Website: <http://www.immunoway.com>  
 Address: 2200 Ringwood Ave San Jose, CA 95131 USA



Please scan the QR code to access additional product information:  
**Cleaved Thrombin APII (Arg327) Rabbit pAb**